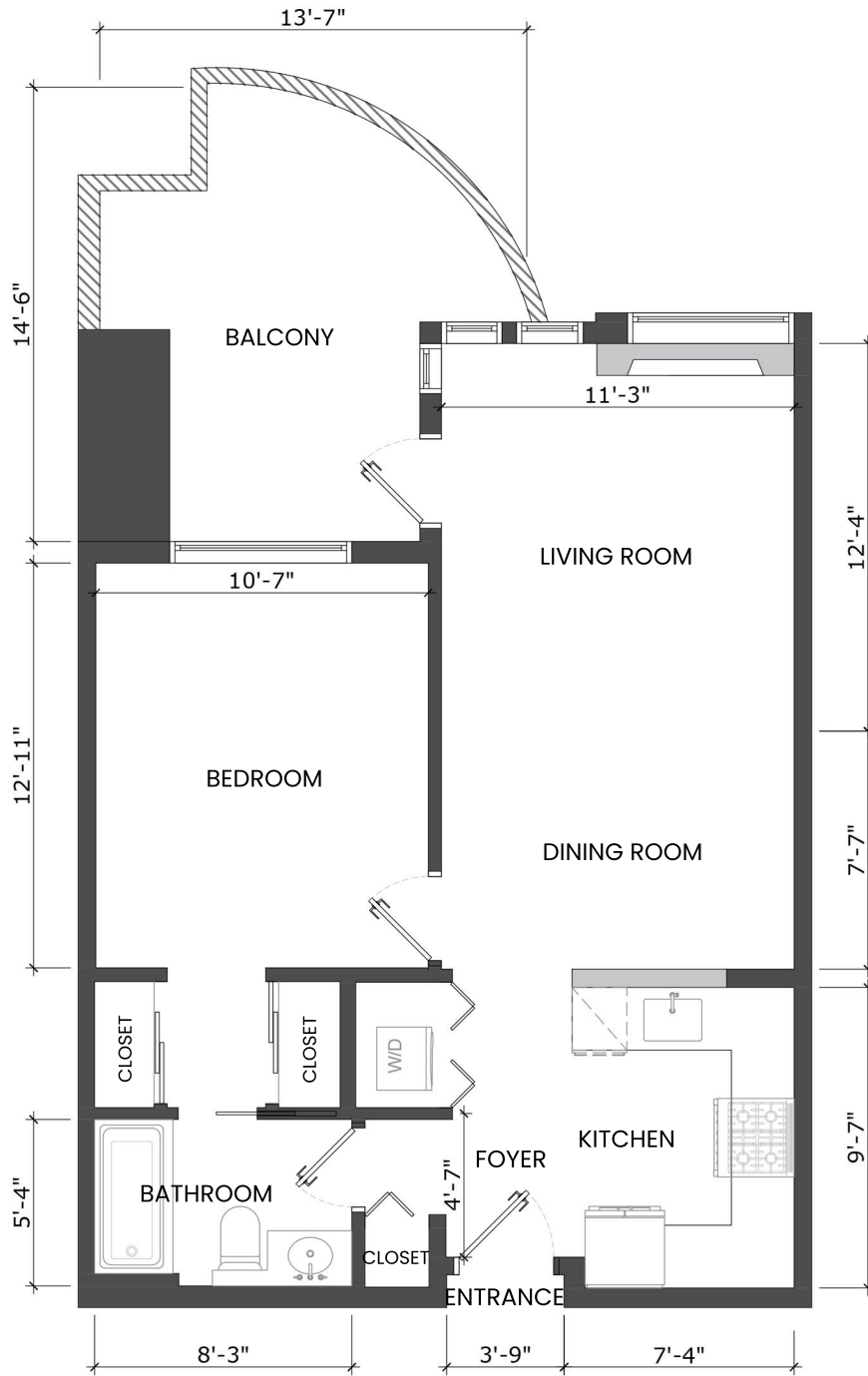


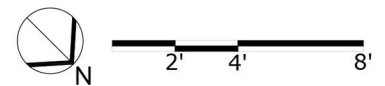
314-345 LONSDALE AVENUE, NORTH VANCOUVER, BC

MAIN FLOOR TOTAL: 640 SQ.FT.

BALCONY: 129 SQ. FT.



MAIN FLOOR PLAN
Ceiling Height: 8'-0"



Leslie McConnell

ENGEL & VÖLKERS

604.354.4580

leslie.mcconnell@evrealstate.com

THE FLOOR PLAN ILLUSTRATION IS NOT SUITABLE FOR CONSTRUCTION/ ARCHITECTURAL PURPOSES.

MEASUREMENTS ARE APPROXIMATE AND MAY NOT BE TO SCALE. E&O INSURED. FLOOR PLAN DESIGNED BY ISHOT.CA ENTERPRISES INC. 604-368-7979 ISHOT.CA

