

#49 – 1910 Cedar Village Crescent, North Vancouver, B.C.

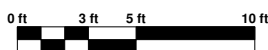
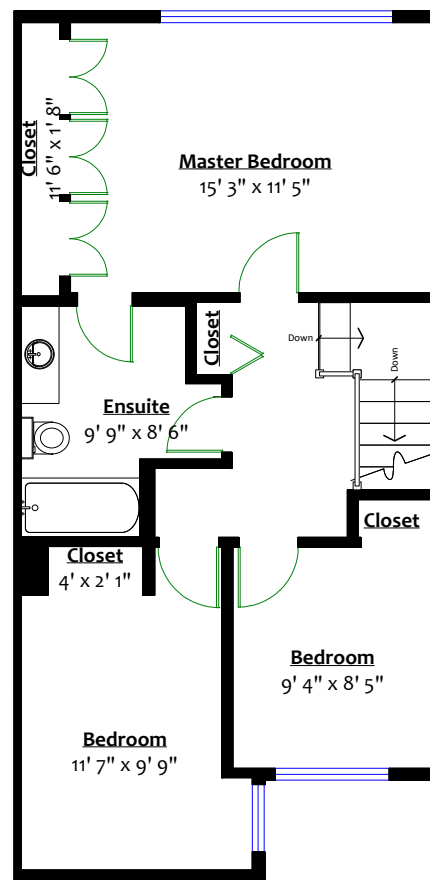
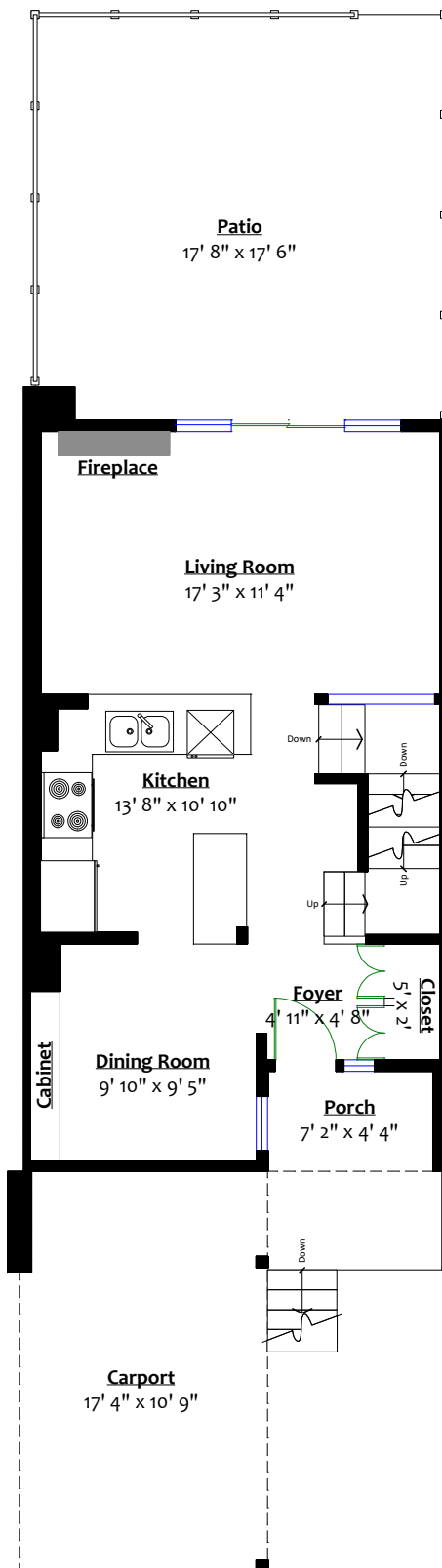
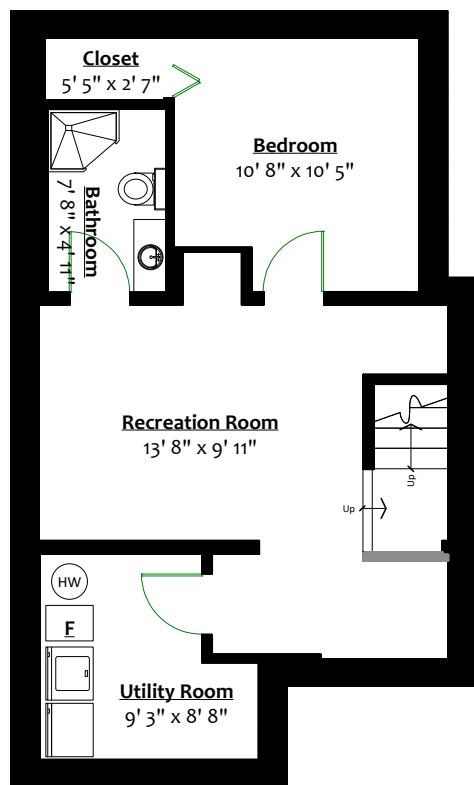
Totals**

Main Level: 564 sq. ft.
 Upper Level: 622 sq. ft.
 Lower Level: 592 sq. ft.
 Total: 1,778 sq. ft.

Carport: 185 sq. ft.
 Porch: 30 sq. ft.
 Patio: 307 sq. ft.
 Total: 522 sq. ft.



778.834.6448 rik@rikdevoest.com



** While all reasonable attempts have been made to ensure accuracy and the square footage and room dimensions are believed to be correct to ANSI Standards, due to the possibility of human error the information cannot be guaranteed. EBO Insured for 1,000,000