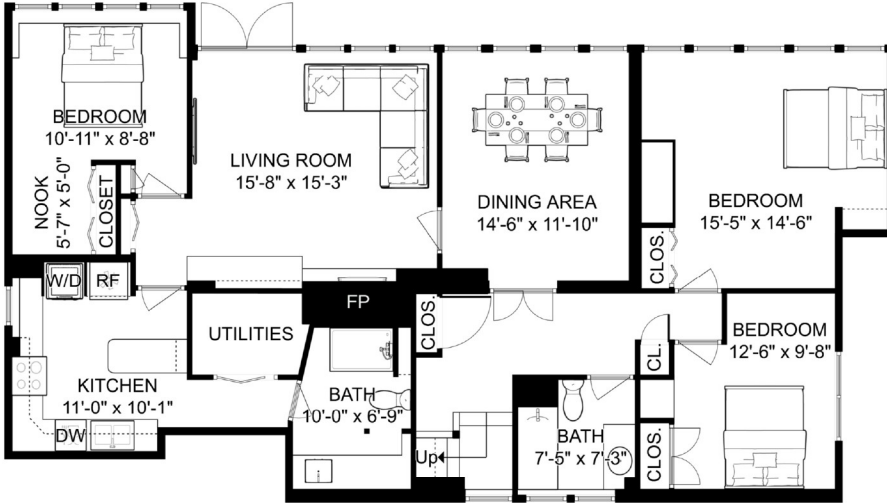


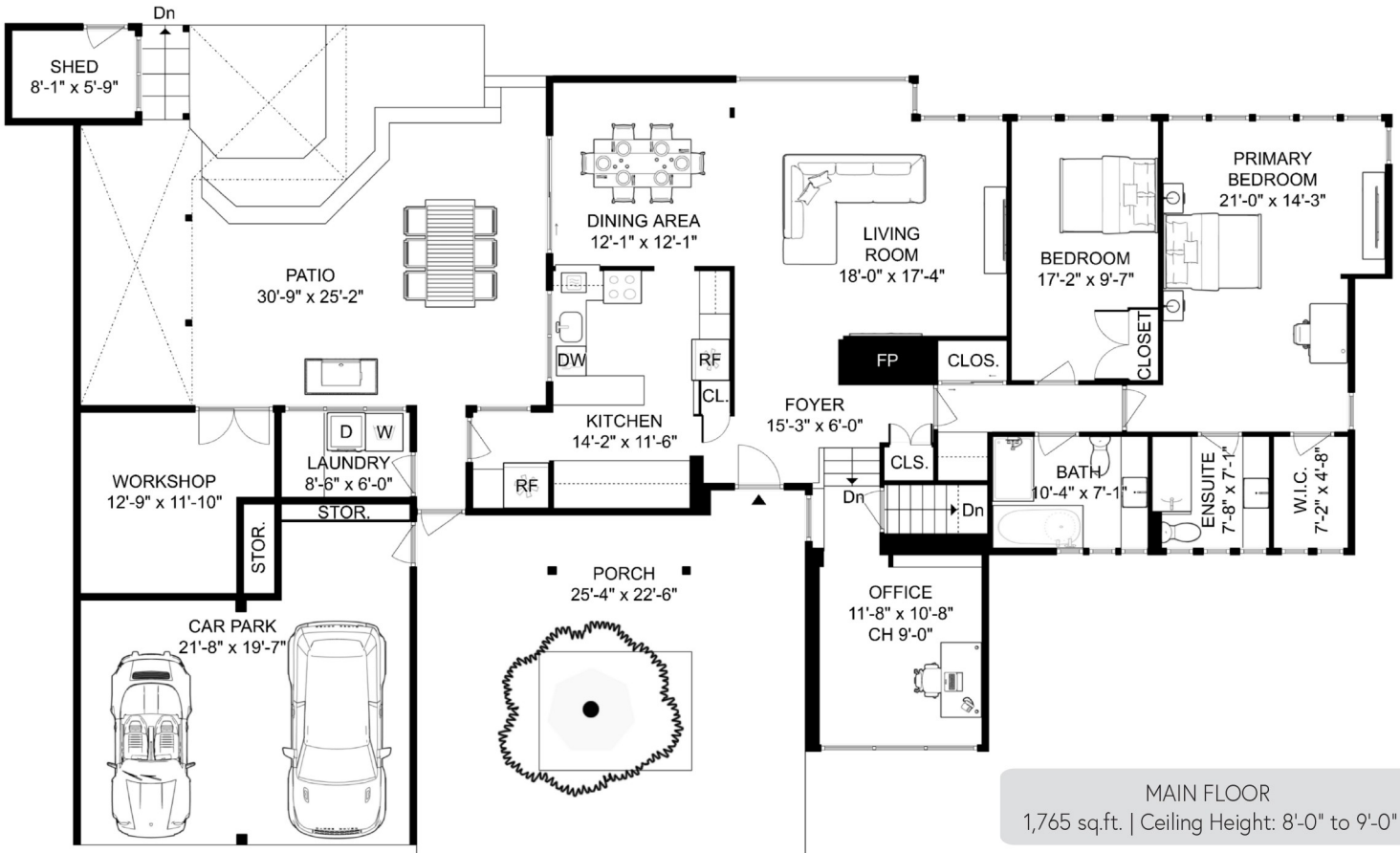
INTERIOR LIVING SPACE	(sq.ft.)
Main Floor	1,765
Lower Floor	1,518
Total Area	3,283

AUXILIARY	
Patio Total	1,216
Workshop	150
Shed	46
Car Park	395
Combined Total	5,090

5 bed
 4 bath
 1 office
 2 kitchen
 2 parking



LOWER FLOOR
1,518 sq.ft. | Ceiling Height: 7'-7"



MAIN FLOOR
1,765 sq.ft. | Ceiling Height: 8'-0" to 9'-0"

