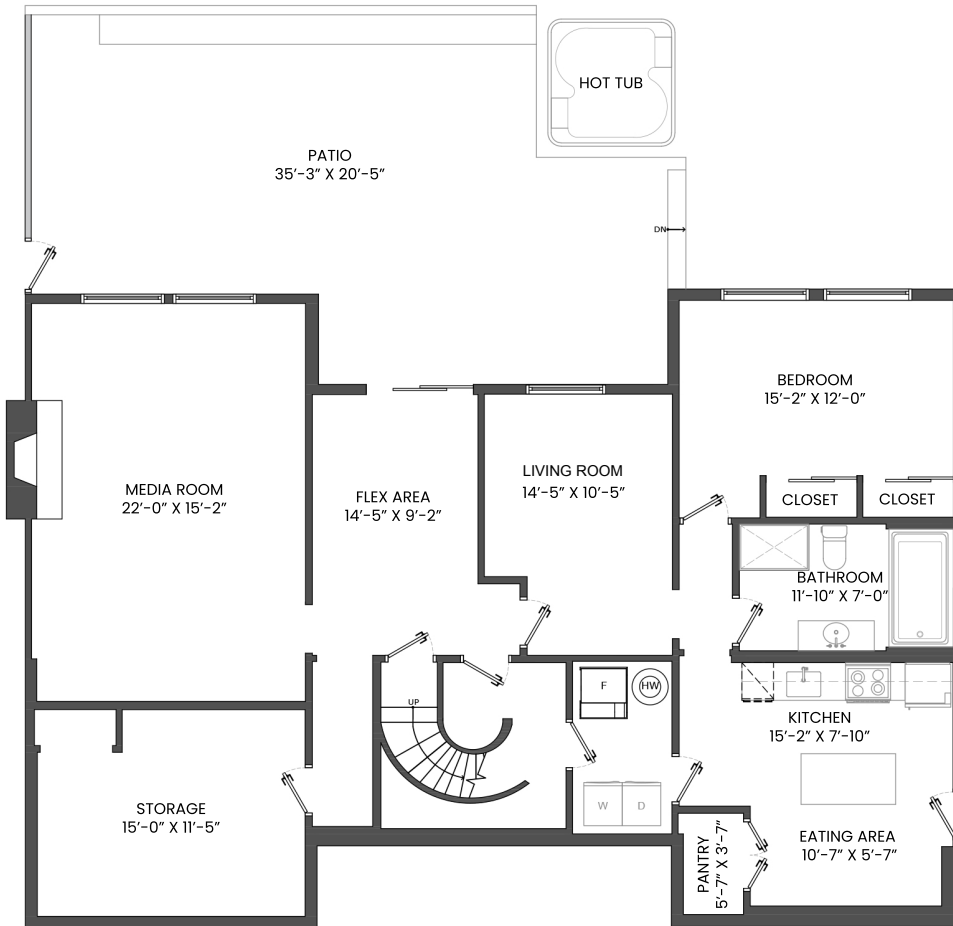
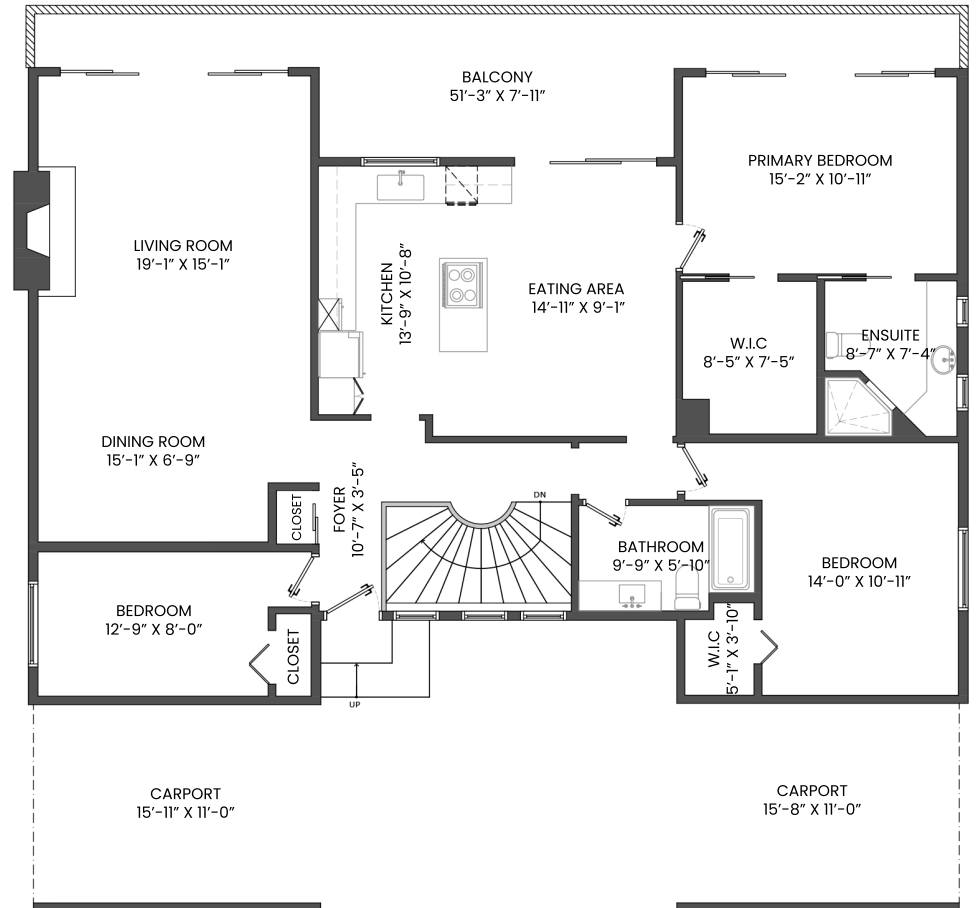


# 1433 MCNAIR DRIVE, NORTH VANCOUVER, BC

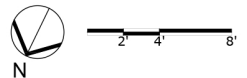
LOWER FLOOR TOTAL: 1,642 SQ.FT. CARPORT: 346 SQ. FT.  
 MAIN FLOOR TOTAL: 1,642 SQ.FT. BALCONY: 251 SQ. FT.  
 TOTAL: 3,284 SQ.FT. PATIO: 642 SQ. FT.



**LOWER FLOOR PLAN**  
 Ceiling Height: 8'-0"



**MAIN FLOOR PLAN**  
 Ceiling Height: 12'-0"



**Wieser & Englmann**

**Wieser & Englmann**

604-767-5229

hello@wegroupproperties.com

wegroupproperties.com

THE FLOOR PLAN ILLUSTRATION IS NOT SUITABLE FOR CONSTRUCTION/ ARCHITECTURAL PURPOSES. MEASUREMENTS ARE APPROXIMATE AND MAY NOT BE TO SCALE. E&O INSURED.  
 FLOOR PLAN DESIGNED BY ISHOT.CA ENTERPRISES INC. 604-368-7979 ISHOT.CA



OAKWYN REALTY

ISHOT