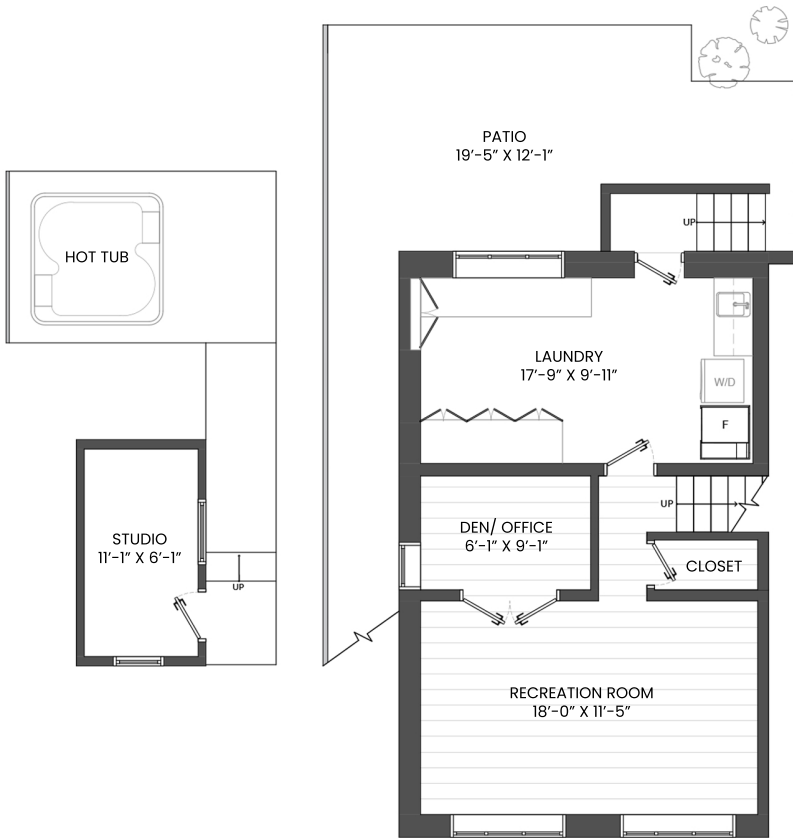
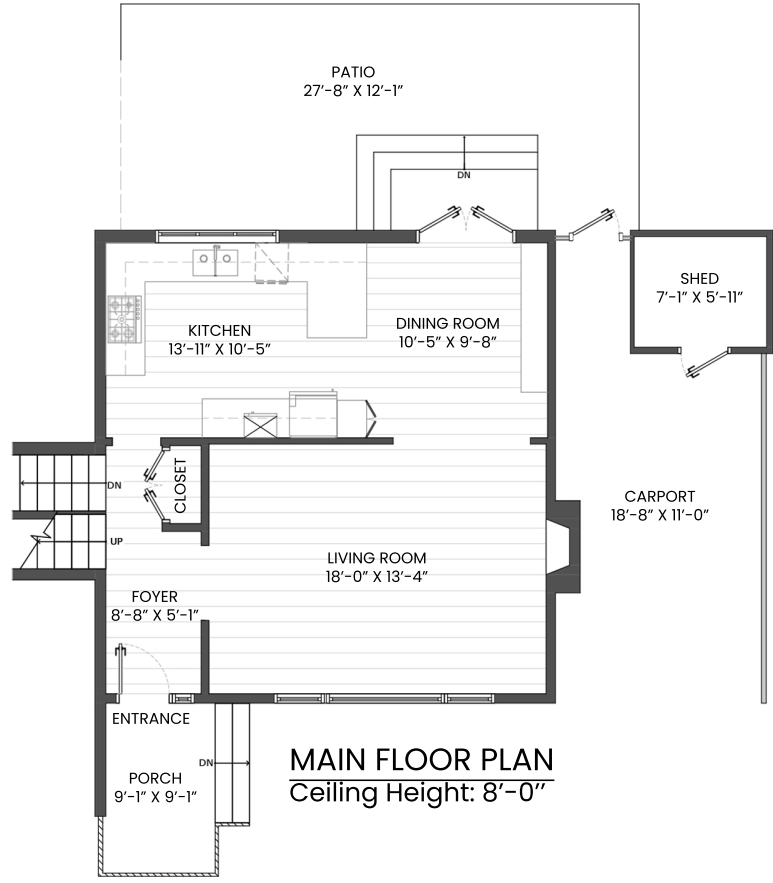


4384 HIGHLAND BOULEVARD, NORTH VANCOUVER, BC

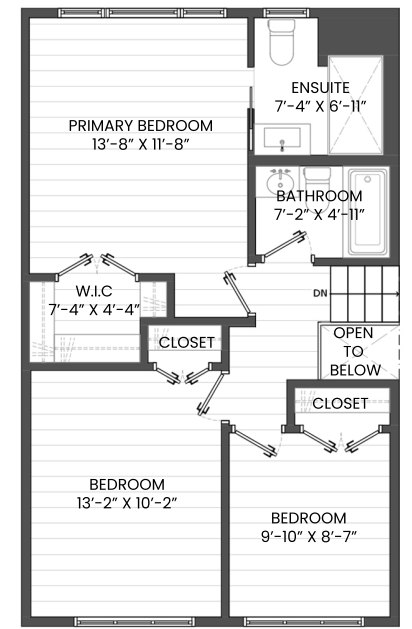
LOWER FLOOR TOTAL: 617 SQ.FT. PATIO: 646 SQ. FT.
 MAIN FLOOR TOTAL: 624 SQ.FT. CARPORT: 205 SQ. FT.
 UPPER FLOOR TOTAL: 665 SQ.FT. STUDIO: 83 SQ. FT.
TOTAL: 1,906 SQ.FT. PORCH: 53 SQ. FT.
 SHED: 50 SQ. FT.



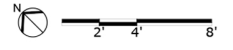
LOWER FLOOR PLAN
Ceiling Height: 7'-10"



MAIN FLOOR PLAN
Ceiling Height: 8'-0"



UPPER FLOOR PLAN
Ceiling Height: 8'-0"



Wieser & Englmann
 604-767-5229
 hello@wegroupproperties.com
 wegroupproperties.com

Wieser & Englmann

THE FLOOR PLAN ILLUSTRATION IS NOT SUITABLE FOR CONSTRUCTION/ ARCHITECTURAL PURPOSES. MEASUREMENTS ARE APPROXIMATE AND MAY NOT BE TO SCALE. E&O INSURED.
 FLOOR PLAN DESIGNED BY ISHOT.CA ENTERPRISES INC. 604-368-7979 ISHOT.CA

