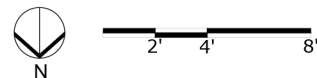
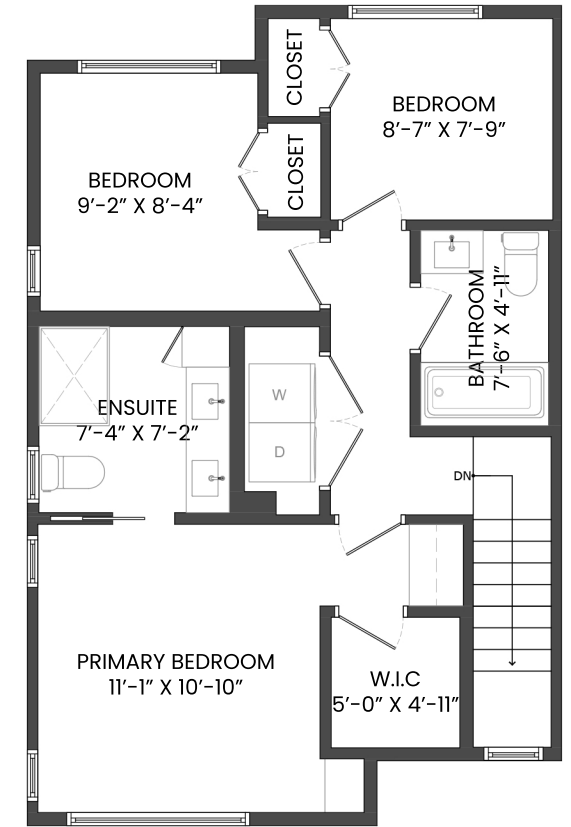
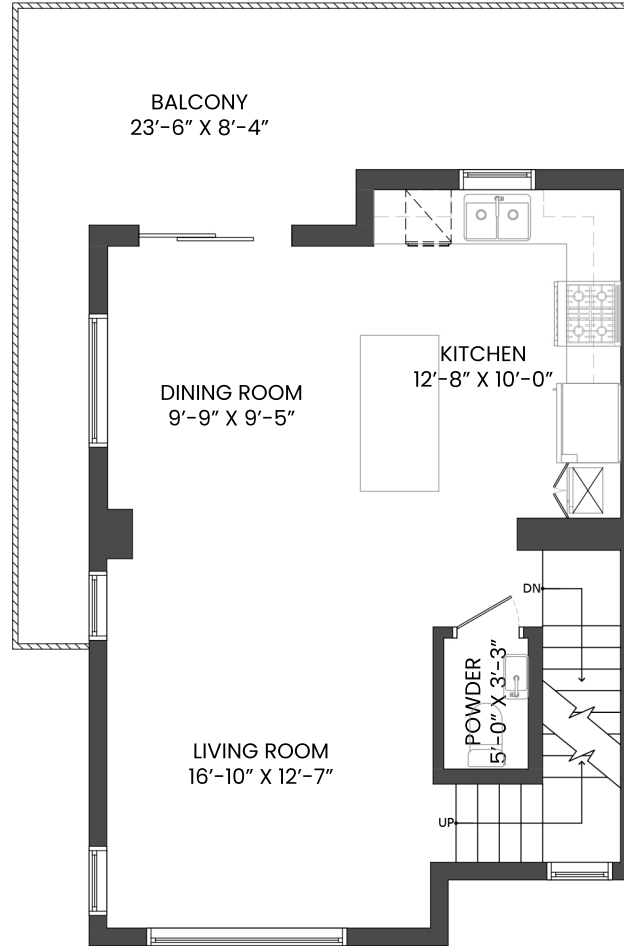
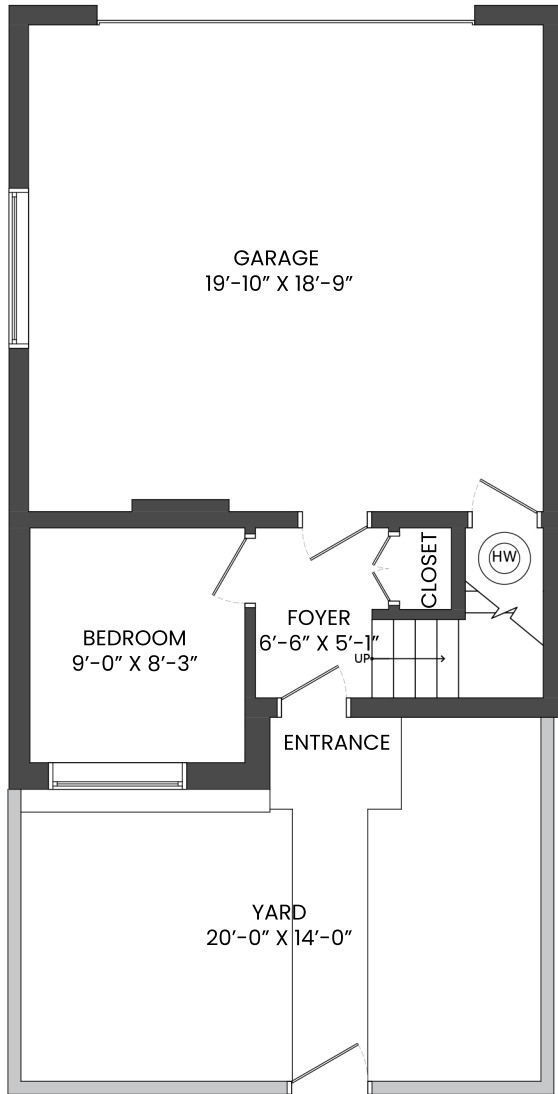


205-3021 ST GEORGE STREET, PORT MOODY, BC

LOWER FLOOR TOTAL: 196 SQ.FT. GARAGE: 408 SQ. FT.
 MAIN FLOOR TOTAL: 581 SQ.FT. YARD: 253 SQ. FT.
 UPPER FLOOR TOTAL: 610 SQ.FT. BALCONY: 217 SQ. FT.
TOTAL: 1,387 SQ.FT.

*MEASUREMENTS ARE DONE USING EXTERIOR WALLS



Wieser & Englmann

604-767-5229

hello@wegroupproperties.com

wegroupproperties.com

Wieser & Englmann

