

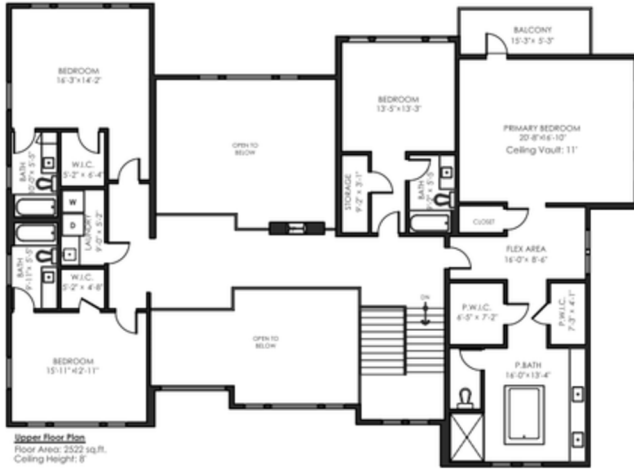
**3228 164a St Surrey**

Main Floor: 2,641 sq.ft.  
Upper Floor: 2,522 sq.ft.  
Lower Floor: 3,129 sq.ft.  
**Total Livable: 8,292 sq.ft.**

Garage: 488 sq.ft.  
**Grand Total: 8,780 sq.ft.**

Detached Garage: 1,155 sq.ft.  
Patio Well: 126 sq.ft.  
Patios: 1,238 sq.ft.  
Balcony: 81 sq.ft.  
Porch: 775 sq.ft.  
**Total Extras: 3,375 sq.ft.**

Open To Below: 663 sq.ft.



MEASURED ON: (2026-06-16)

info@pixlworks.com www.pixlworks.com 1 855 749 5957



E&O Insured. Total square foot calculated to gross unit area. SQFT based on interior measurements to exterior walls, not taken from original blueprints, may include unfinished area. This is for marketing purposes only and is not intended for architectural/construction use. All details, sizes & placements should be considered approximate within +/- 2% tolerance.