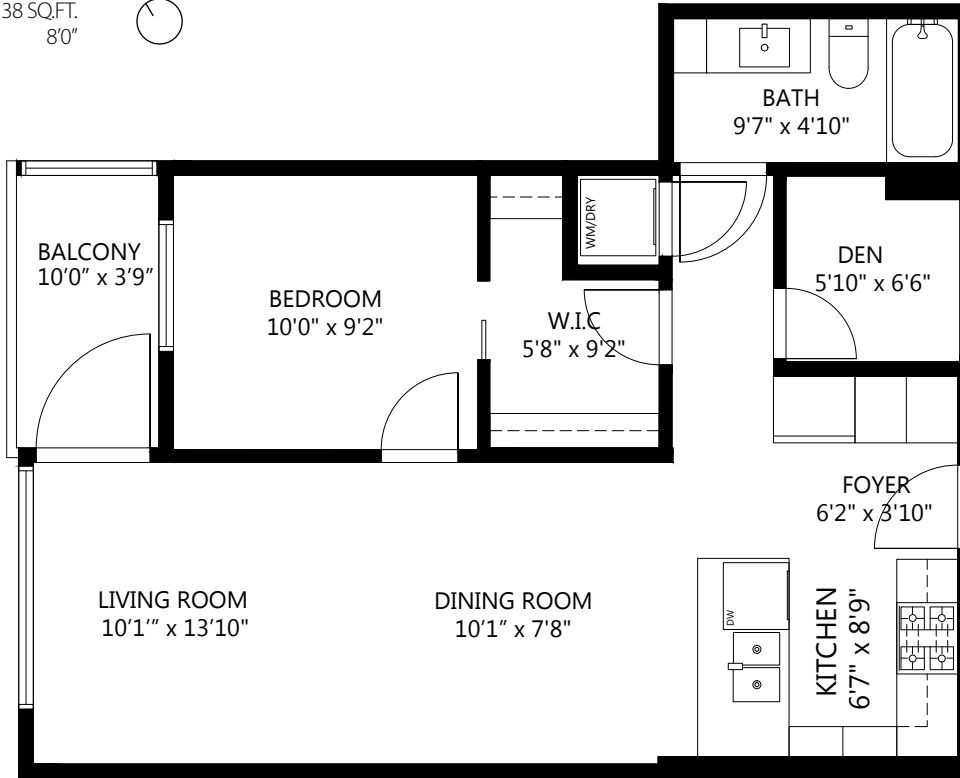


# 210-508 W 29th Ave

Vancouver, BC V5Z 2Y8

Total Area: 670 SQ.FT.  
Balcony Area: 38 SQ.FT.  
Ceiling Height: 8'0"



## ALICE REI HO

Personal Real Estate Corporation

778 919 6919  
alice@alicereiho.com  
www.alicereiho.com



1 BEDROOMS  
1 BATH-ROOMS  
670 TOTAL SQ.FT.



**3D IMMERSIVE**  
Tours Photos Floor Plans

Professionally measured by: 3D Immersive Marketing Ltd.

Lead Floor Planner: *Sara Alexander*  
Quality Assurance: *Jessie Graham*

210-508 W 29th Ave, Vancouver BC V5Z 2Y8

The floor plan illustration is not suitable for construction/architectural purposes. Measurements are approximate and may not be to scale. This communication is not intended to cause or induce breach of an existing agency agreement.