

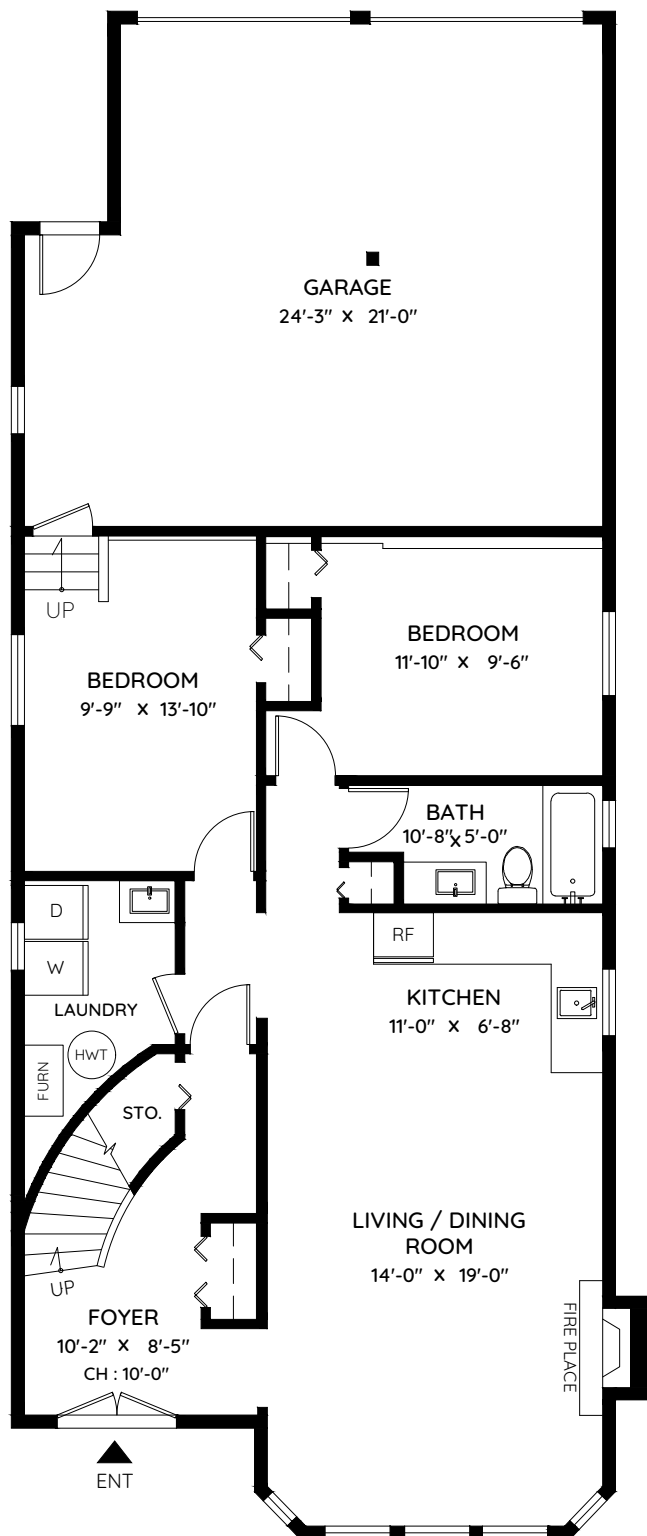
5462 MANOR STREET

BURNABY, BC

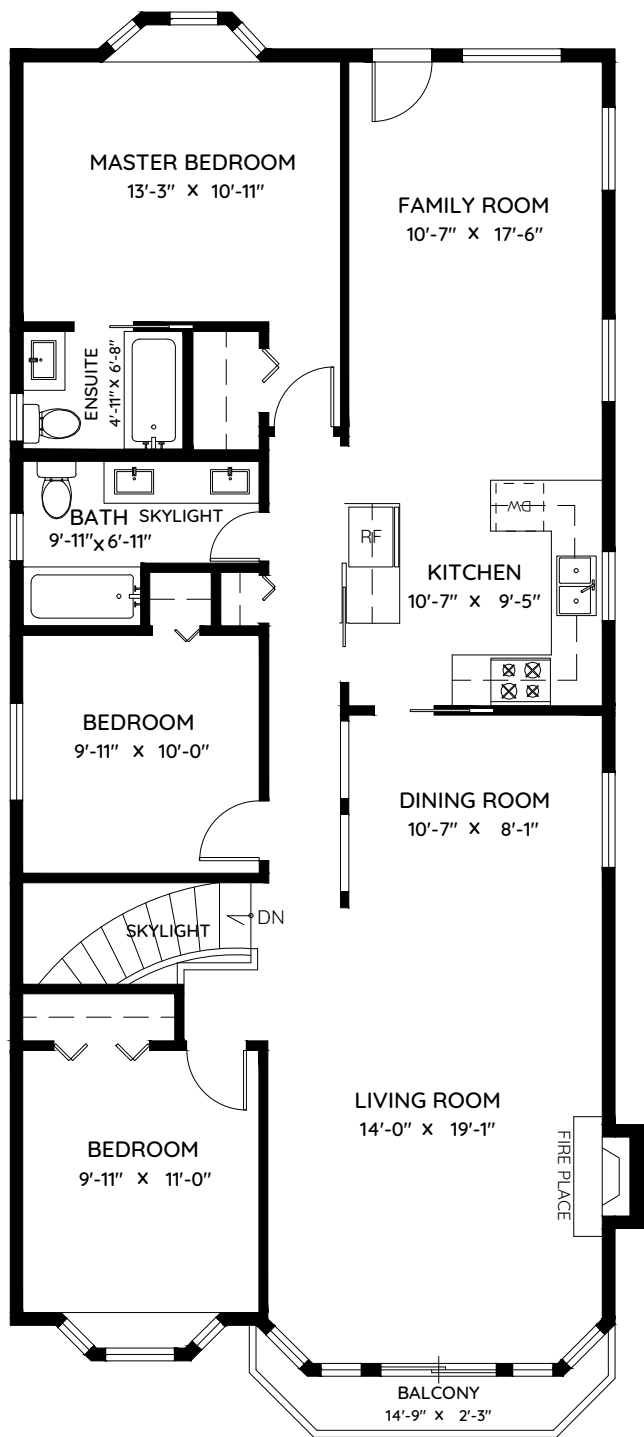


KELVIN K. LUK
PERSONAL REAL ESTATE CORPORATION

MAIN	1,379 SQ.FT.	GARAGE	511 SQ.FT.
LOWER	1,022 SQ.FT.	BALCONY	38 SQ.FT.
TOTAL	2,401 SQ.FT.	TOTAL	549 SQ.FT.



LOWER FLOOR
1,022 SQ.FT.
CH: 8'-0"



MAIN FLOOR
1,379 SQ.FT.
CH: 8'-0"



0 ft 3 ft 5 ft

The floor plan and the measurements are approximate and are to be used for advertising usage only.
Not suitable for architectural or construction. ESO Insured