



**BRIAN RHYS**

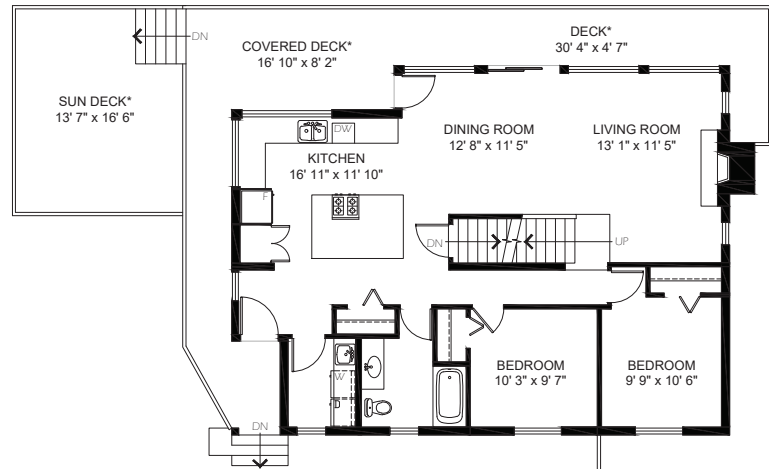
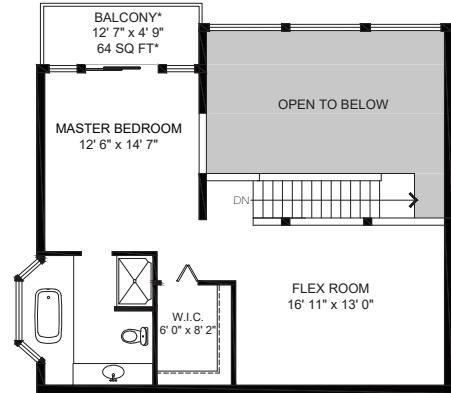
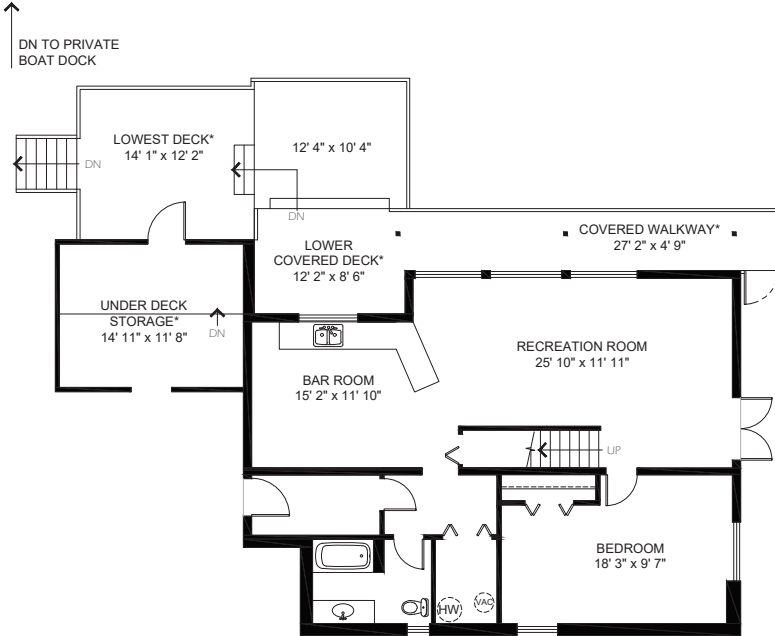
PERSONAL REAL ESTATE CORPORATION

c778.829.1105

brian@brianrhys.com



**Sussex**



**10054 Wescan Road  
Halfmoon Bay V0N 1Y2**

ABOVE MAIN	675	SQFT
MAIN FLOOR	1,130	SQFT
BELOW MAIN	1,112	SQFT
<b>TOTAL AREA</b>	<b>2,917</b>	<b>SQFT</b>

DETACHED GARAGE*	704	SQFT
WORKSHOP*	302	SQFT
<b>TOTAL DECK SPACE*</b>	<b>1,211</b>	<b>SQFT</b>

