

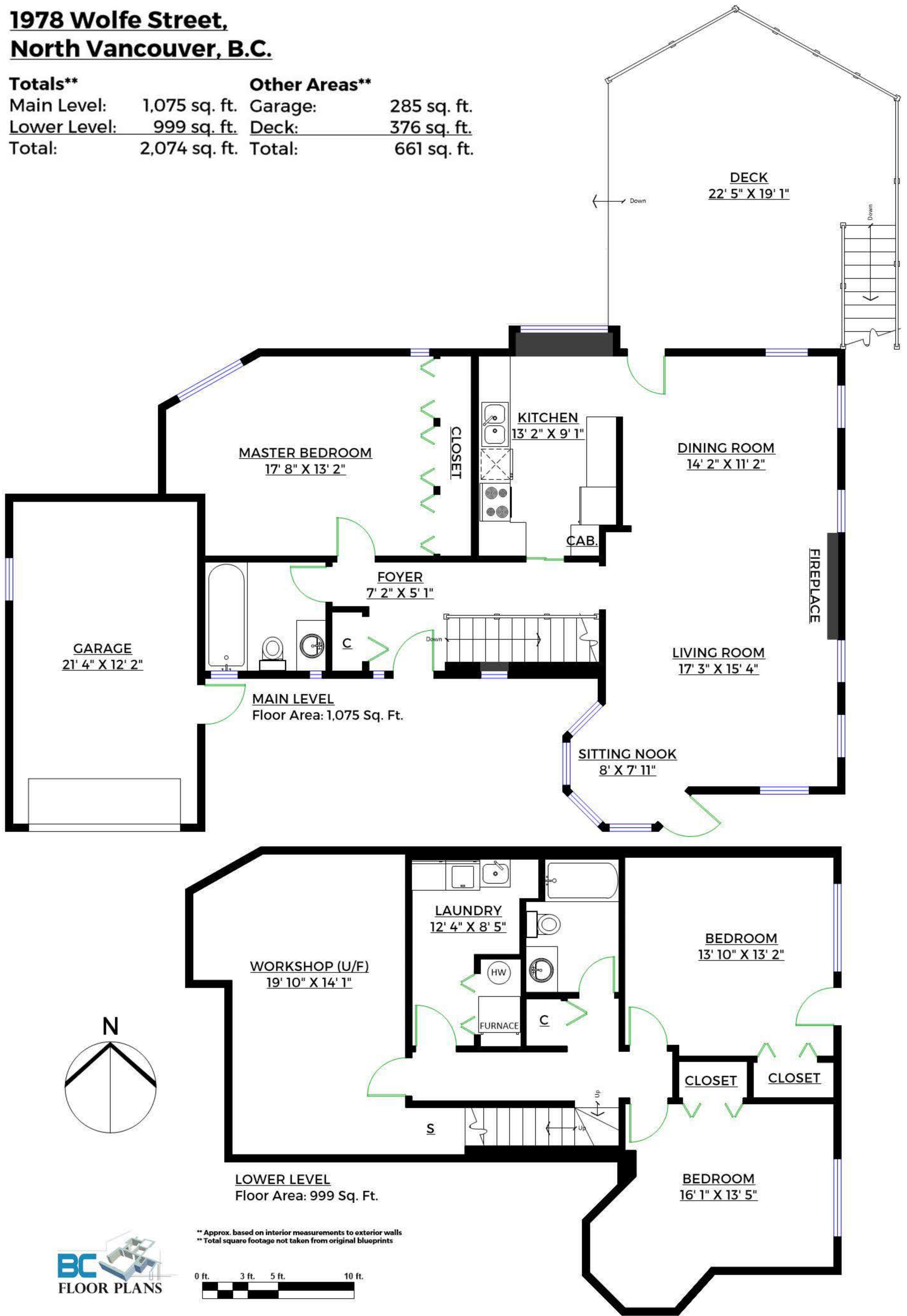
**1978 Wolfe Street,
North Vancouver, B.C.**

Totals**

Main Level: 1,075 sq. ft.
Lower Level: 999 sq. ft.
Total: 2,074 sq. ft.

Other Areas**

Garage: 285 sq. ft.
Deck: 376 sq. ft.
Total: 661 sq. ft.



** Approx. based on interior measurements to exterior walls
** Total square footage not taken from original blueprints

