

LANDMARK
LOCATION.

LOWER
LONSDALE
LIVING.

PROMENADE

BY POLYGON

PREVIEW PACKAGE





LANDMARK

Designed by Nigel Baldwin and DYS Architecture, Promenade has West Coast tastes in mind with a refined brick-and-glass façade and metal cladding in soft silvery tones, accented by warm wood-style detailing.

On Promenade's podium level, a landscaped amenity offers an elevated space to watch the lively hum on Lower Lonsdale while, up above, generous wave-inspired balconies create a connection to the energized waterfront before you.



Artist's concept only



T I M E L E S S

The architectural sophistication of Promenade's exterior continues
with interiors that make a lasting impression.

From one-bedrooms to penthouse suites, Promenade's homes come in a variety of unique floorplans that emphasize expansive, open living. Engineered hardwood flooring and plush wool carpeting add elegance from the ground up, while integrated appliances in the gourmet kitchen and the generous use of marble in the ensuite add a true sense of decadence. Timeless materials are found throughout, each chosen with style and discerning tastes in mind.

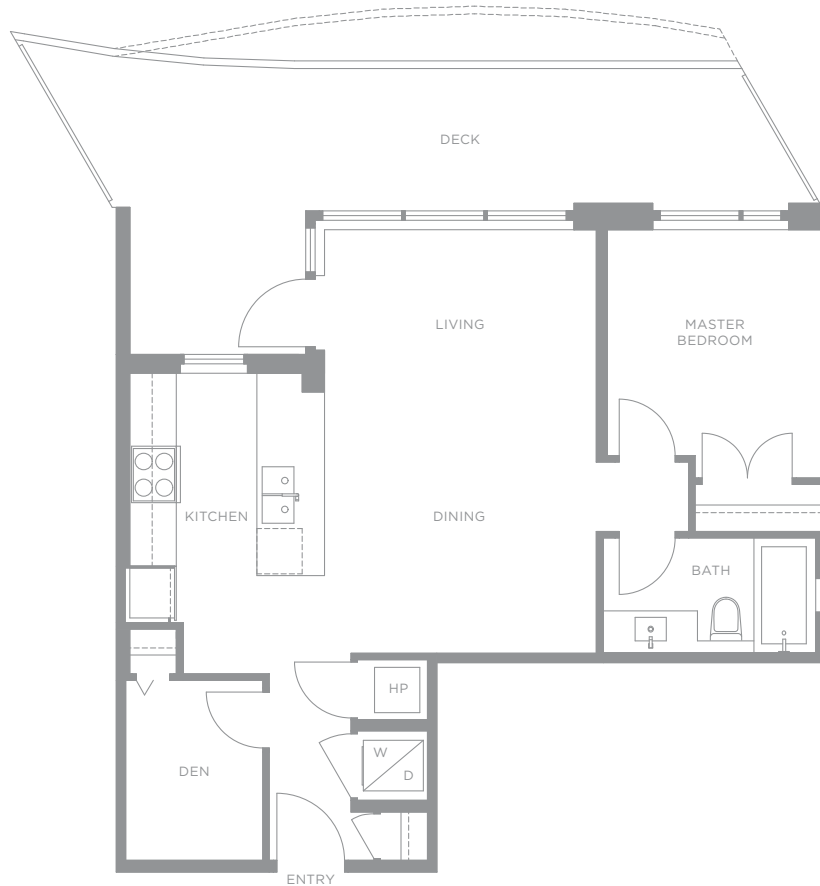
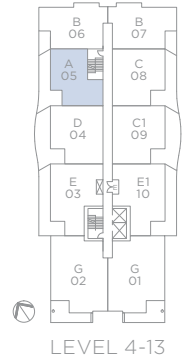




DRAFT

PLAN A

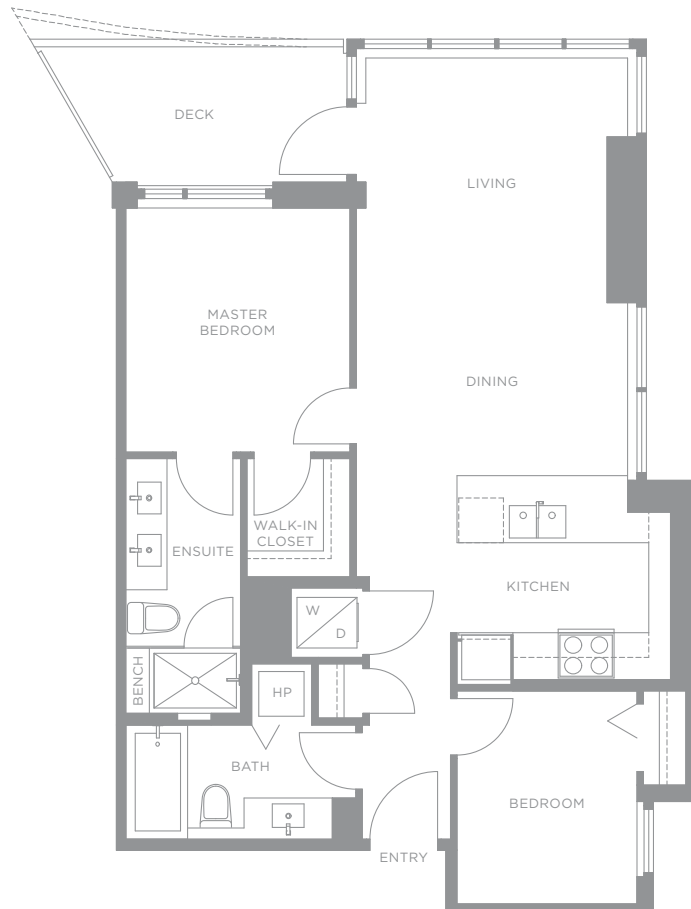
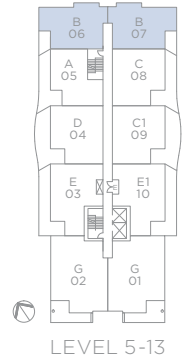
1 BEDROOM + DEN, 1 BATHROOM
722 SQ.FT. (APPROX.)



DRAFT

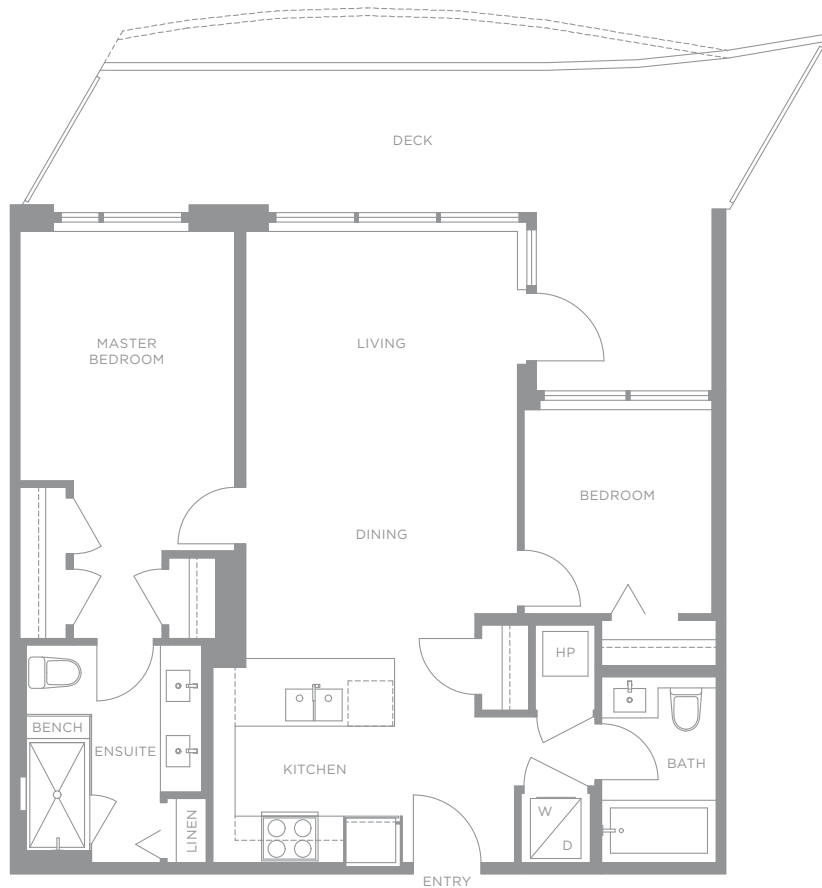
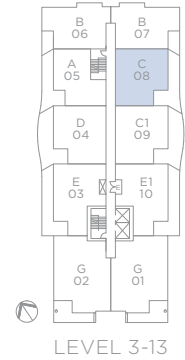
PLAN B

2 BEDROOM, 2 BATHROOM
812 SQ.FT. (APPROX.)



PLAN C

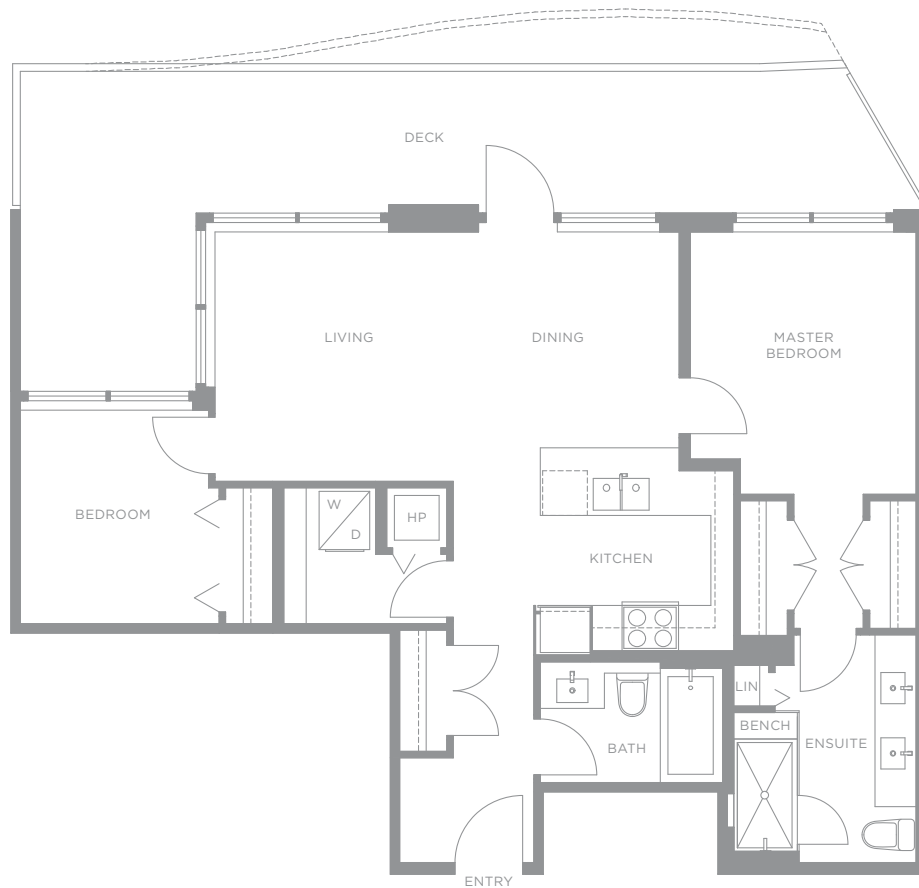
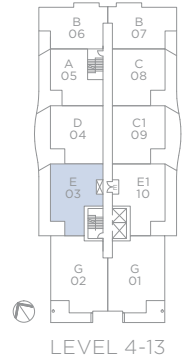
2 BEDROOM, 2 BATHROOM
860 SQ.FT. (APPROX.)



DRAFT

PLAN E

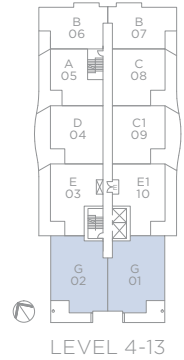
2 BEDROOM, 2 BATHROOM
902 SQ.FT. (APPROX.)



DRAFT

PLAN G

3 BEDROOM, 2 BATHROOM
1,220 SQ.FT. (APPROX.)





ANDERSON WALK, NORTH VANCOUVER



QUEEN MARY, NORTH VANCOUVER



BRANCHES, NORTH VANCOUVER



ACADEMY, UBC

BUILT RIGHT

BY POLYGON

The quality homes at Promenade are built with care by Polygon Promenade at The Quay Homes Ltd. British Columbia owned and operated since 1980, the Polygon family of companies has built more than 26,000 homes throughout the Lower Mainland, from concrete high-rises and wood-frame condominiums to townhomes and single-family communities. With over three decades in business, Polygon has earned the trust of thousands of families by committing to quality design, sound construction and exceptional customer service.

