



# BROCK SMEATON

— PERSONAL REAL ESTATE CORPORATION —



2910 PARK LANE

Altamont | West Vancouver



## ONE OF WEST VANCOUVER'S FINEST SEASIDE ESTATES

This is truly one of Vancouver's finest seaside estates. Designed by Paul Grant and built to exacting standards with concrete construction (over 4 years in the making), situated on a 1/2-acre waterfront lot with 98' of frontage and incredible privacy and views. The stunning home is meticulous, offering over 8300 sq. ft. of exquisite luxury, including a Poggenpohl kitchen, extensive use of zinc, stainless steel, Pennsylvania bluestone, Douglas Fir framed windows, geothermal heating (including driveway), A/C, gated entry, infinity edge pool/spa, guest suite, elevator and miles of millwork. No stone has been left unturned on detail. This masterpiece must be seen to be appreciated. By appointment only.

Lower Floor: 2,653 sq ft  
Main Floor: 2,962 sq ft  
Upper Floor: 2,723 sq ft  
Total Area: 8,338 sq ft

Outdoor Areas: 2,460 sq ft  
Storages: 348 sq ft  
Garages: 1,055 sq ft

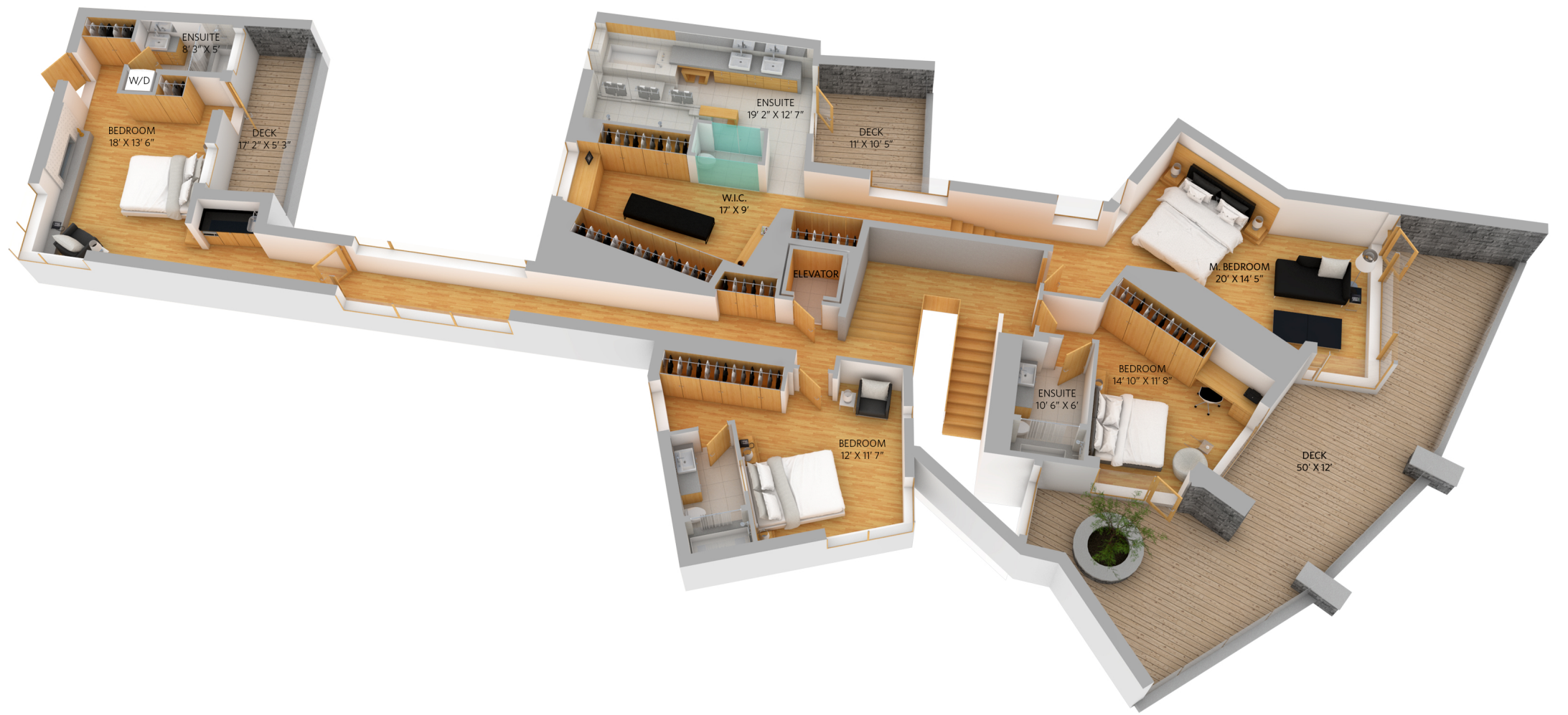


## SPECIFICATIONS

Bedrooms:	5
Bathrooms:	7
Full Baths:	5
Half Baths:	2
Living Area:	8,686 sqft
Lot:	20,581 sqft
Taxes:	\$65,691















C 604.619.9131    O 604.925.2911  
W [www.brocksmeaton.com](http://www.brocksmeaton.com)    E [brock@brocksmeaton.com](mailto:brock@brocksmeaton.com)

**ROYAL LEPAGE** | **Sussex**

2397 Marine Drive West Vancouver, BC V7V 1K9