

2910 Park Lane - Main Floor Plan (2,962 sq ft)

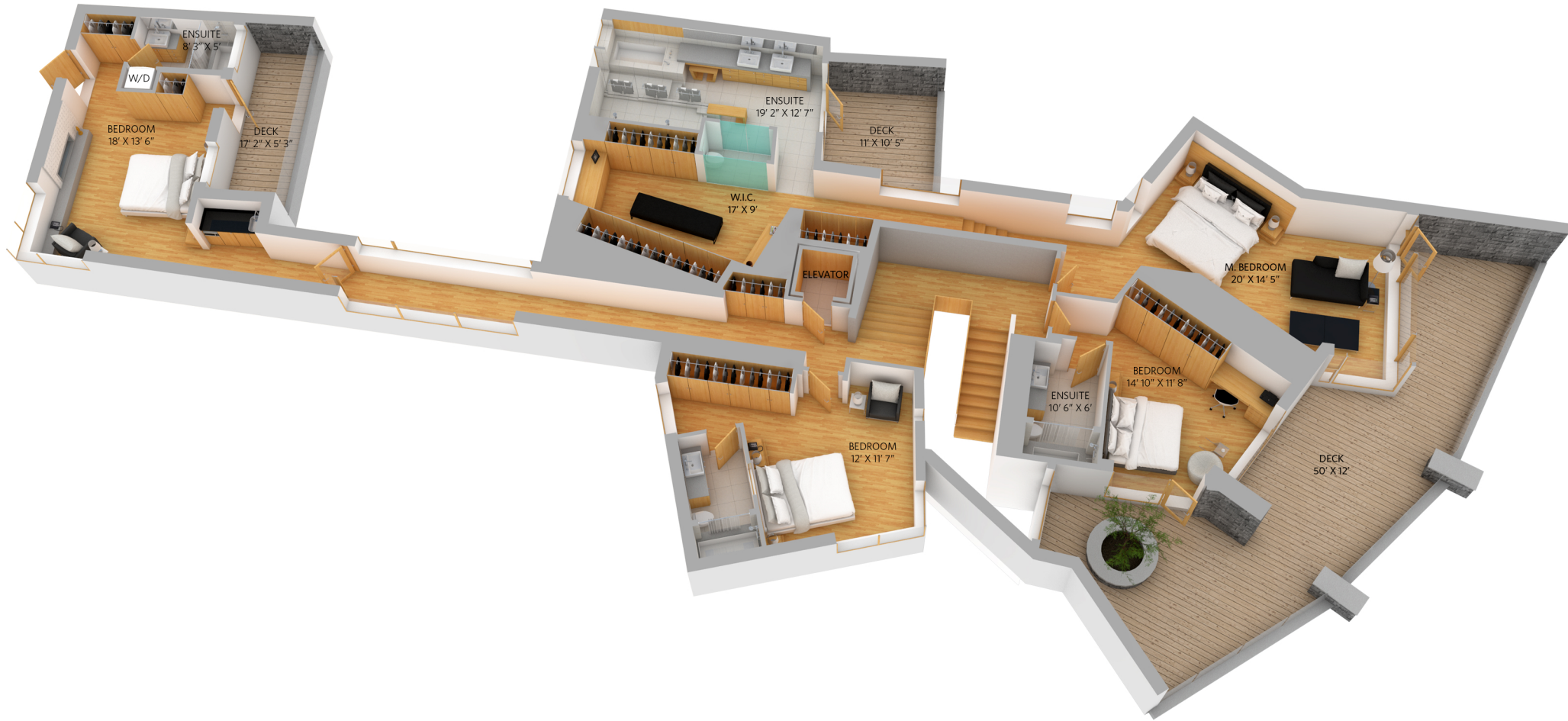
6 Bedrooms, 5 Bathrooms and 2 Half Baths

Lower Floor: 2,653 sq ft
Main Floor: 2,962 sq ft
Upper Floor: 2,723 sq ft
Total Area: 8,338 sq ft

Outdoor Areas: 2,460 sq ft
Storages: 348 sq ft
Garages: 1,055 sq ft



2910 Park Lane - Upper Floor Plan (2,723 sq ft)



2910 Park Lane - Lower Floor Plan (2,653 sq ft)

