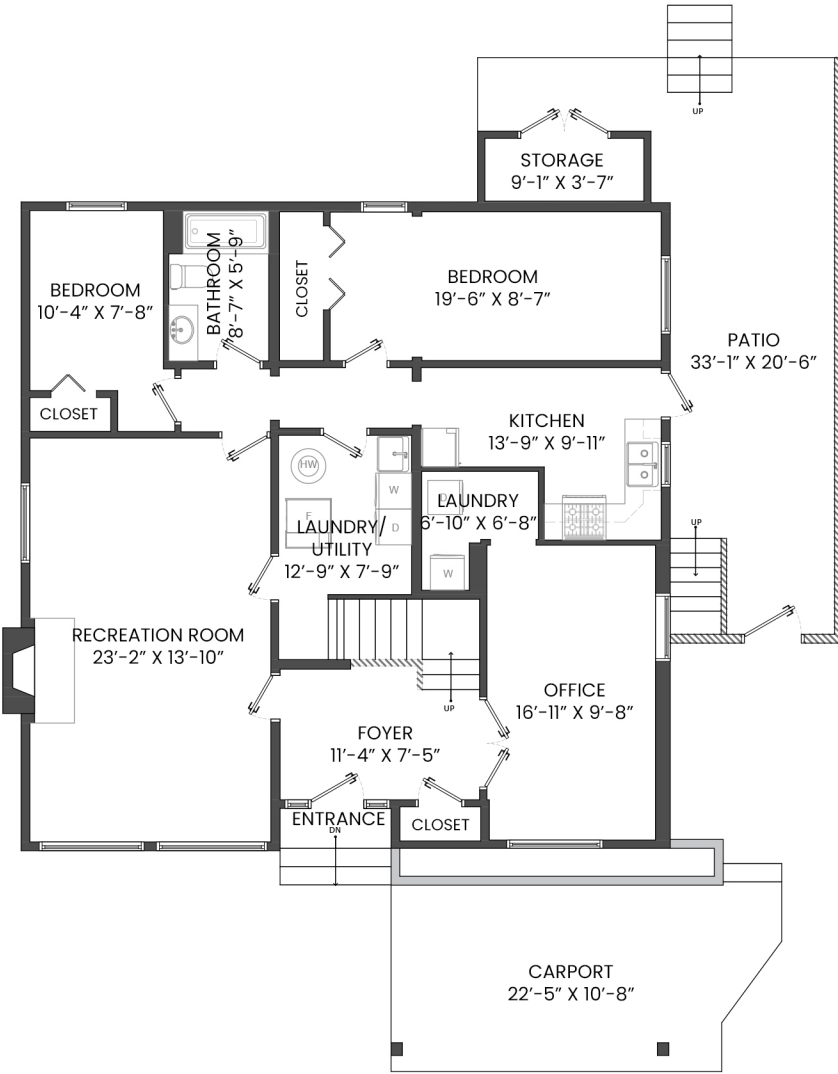


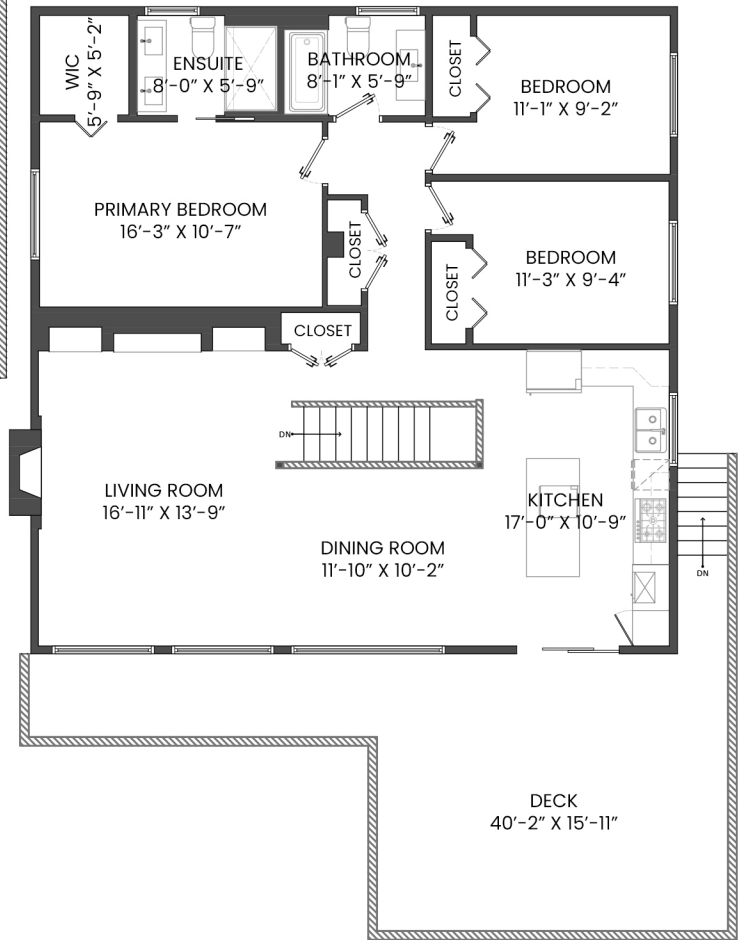
884 WELLINGTON DRIVE, NORTH VANCOUVER, BC

LOWER FLOOR TOTAL: 1,367 SQ.FT.
 MAIN FLOOR TOTAL: 1,378 SQ.FT.
 TOTAL: 2,745 SQ.FT.

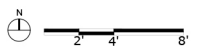
DECK: 432 SQ.FT.
 CARPORT: 223 SQ.FT.
 PATIO: 346 SQ.FT.
 STORAGE: 41 SQ.FT.



LOWER FLOOR PLAN
 Ceiling Height: 8'-0"



MAIN FLOOR PLAN
 Ceiling Height: 10'-1"



Brock Smeaton PREC*
 604.619.9131
 brock@brocksmeaton.com
 www.brocksmeaton.com

Jesse Dean Cook PREC*
 604.506.5174
 jesse@smeatoncook.com
 www.smeatoncook.com



* PERSONAL REAL ESTATE CORPORATION. THE FLOOR PLAN ILLUSTRATION IS NOT SUITABLE FOR CONSTRUCTION/ ARCHITECTURAL PURPOSES. MEASUREMENTS ARE APPROXIMATE AND MAY NOT BE TO SCALE. E&O INSURED. FLOOR PLAN DESIGNED BY ISHOT.CA ENTERPRISES INC. 604-368-7979 ISHOT.CA

