

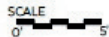
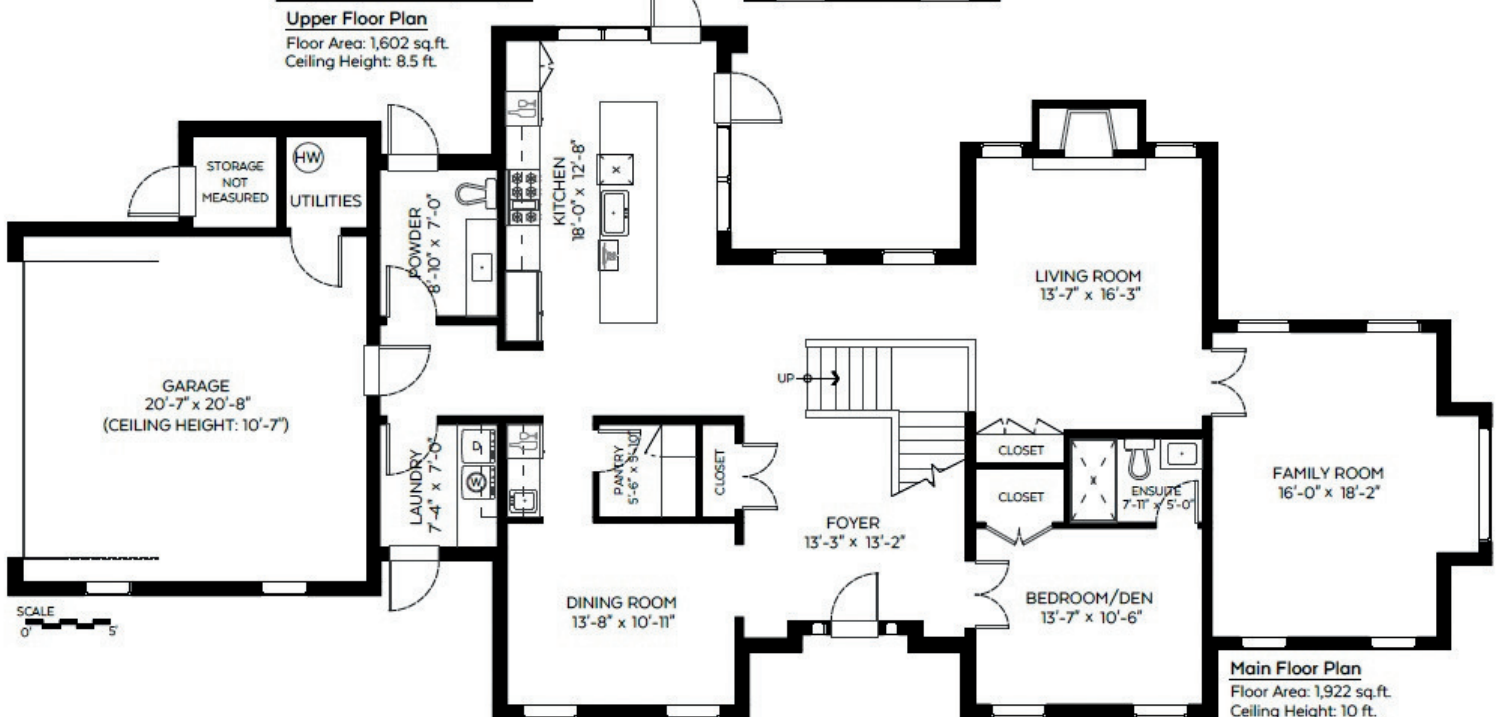
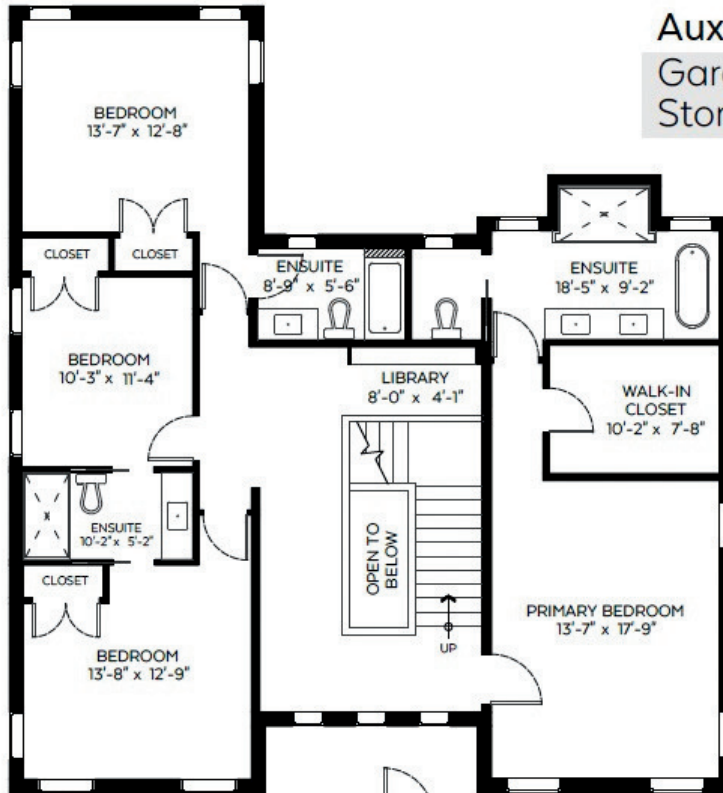


4050 Ripple Place,  
 West Vancouver, B.C.

Main Floor:	1,922 sq.ft.
Upper Floor:	1,602 sq.ft.
<b>Total:</b>	<b>3,524 sq.ft.</b>
Open to Below:	29 sq.ft.

### Auxiliary Area

Garage:	505 sq.ft.
Storage:	43 sq.ft.



NORTH

