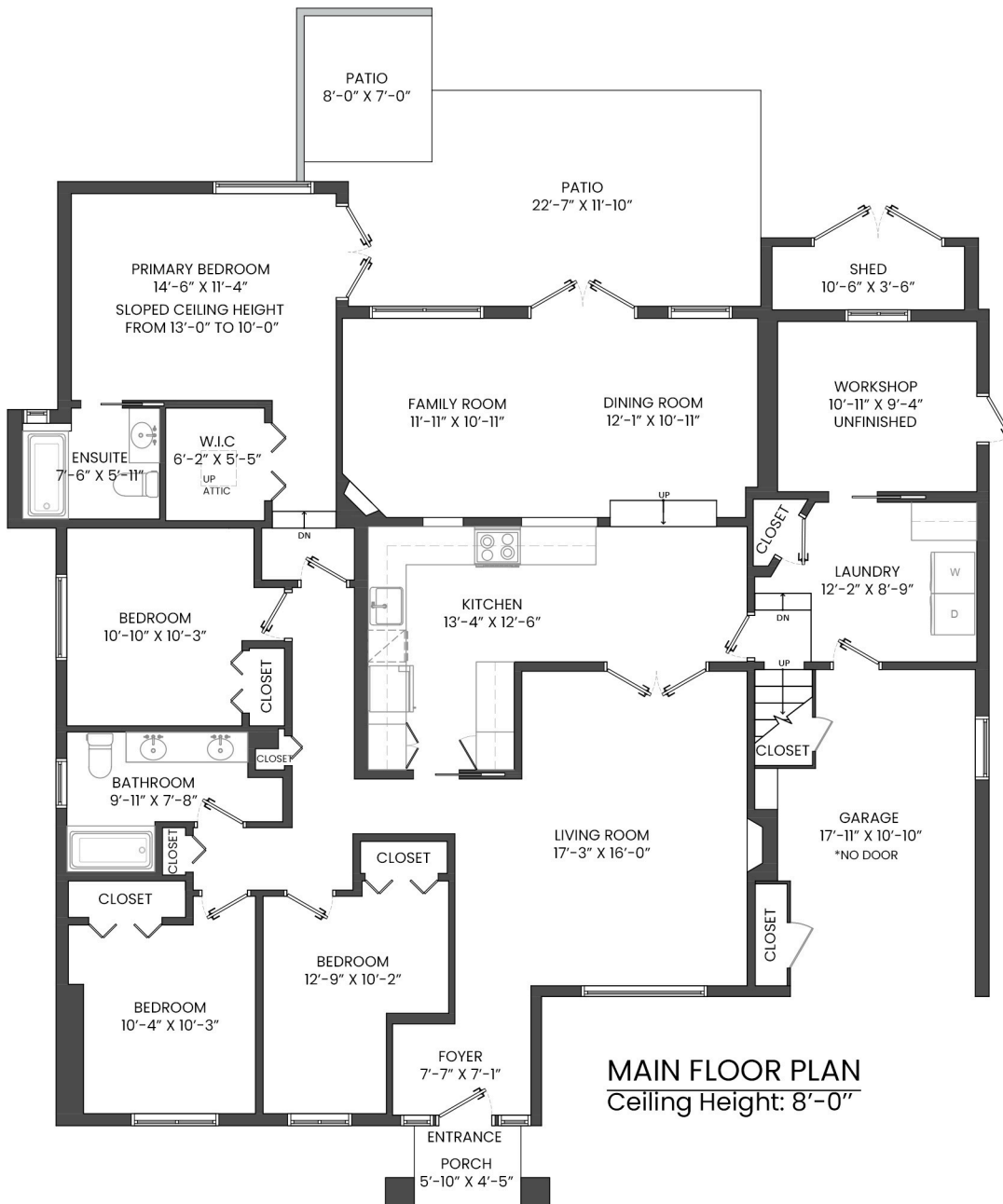


# 1874 APPIN ROAD, NORTH VANCOUVER, BC

4 BEDROOMS | 2 BATHROOMS



**MAIN FLOOR PLAN**  
Ceiling Height: 8'-0"

|                     |                     |             |             |
|---------------------|---------------------|-------------|-------------|
| MAIN FLOOR TOTAL:   | 1,899 SQ.FT.        | ATTIC:      | 309 SQ. FT. |
| UPPER FLOOR TOTAL:  | 396 SQ.FT.          | PATIO:      | 307 SQ. FT. |
| <b>TOTAL:</b>       | <b>2,295 SQ.FT.</b> | CRAWL AREA: | 259 SQ. FT. |
| UNFINISHED:         | 115 SQ.FT.          | GARAGE:     | 211 SQ. FT. |
| <b>GRAND TOTAL:</b> | <b>2,410 SQ.FT.</b> | SHED:       | 46 SQ. FT.  |
|                     |                     | BALCONY:    | 44 SQ. FT.  |
|                     |                     | POPCH:      | 25 SQ. FT.  |



**UPPER FLOOR PLAN**  
Ceiling Height: 7'-8"



**Smeaton Cook**  
REAL ESTATE GROUP

**Jesse Dean Cook** PREC\*  
604-506-5174  
jesse@smeatoncook.com

**Brock Smeaton** PREC\*  
604-619-9131  
brock@brocksmeaton.com

**ROYAL LEPAGE** | **Sussex**

