

# Caileigh Anderson

604-323-3273

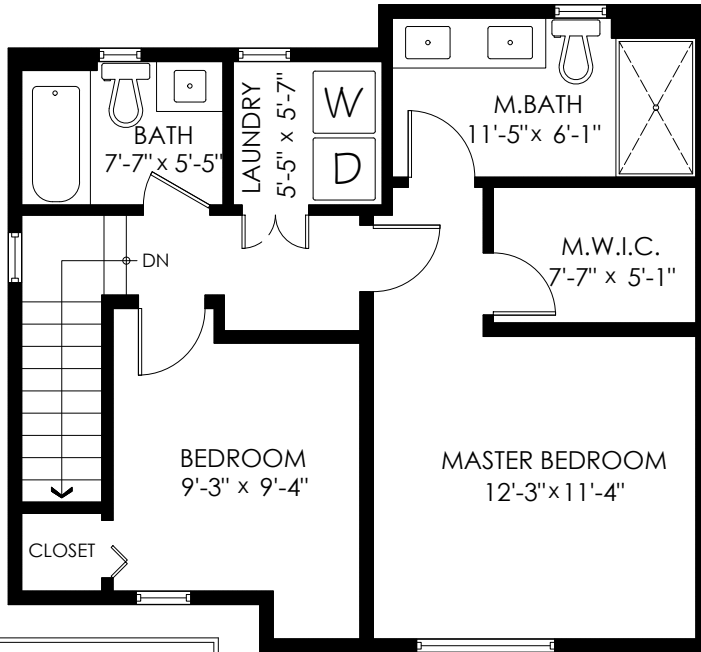
caileighanderson@gmail.com

www.caiaanderson.com

34-7848 209 St, Langley

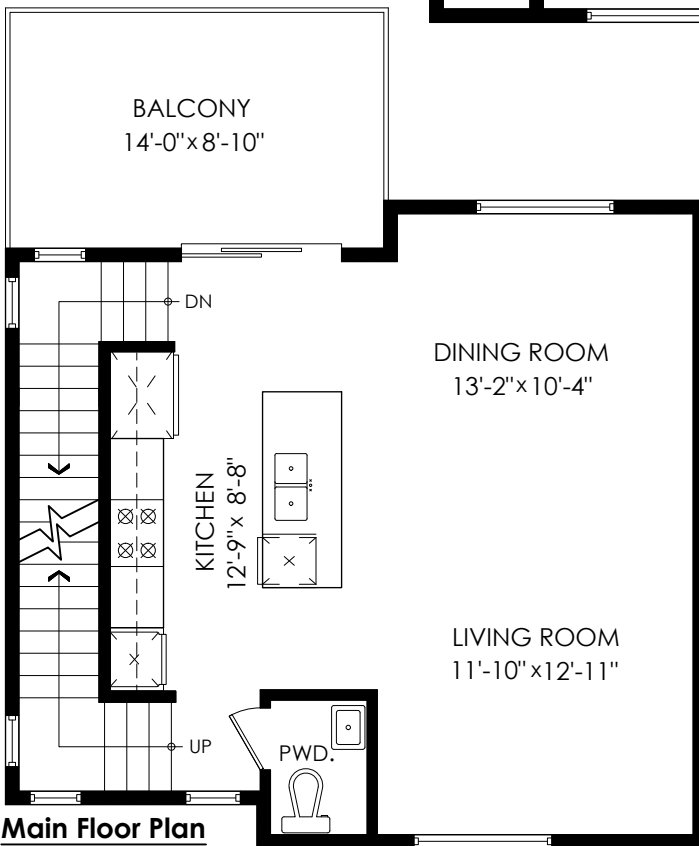
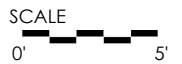
Main Floor: 597 sq.ft.  
 Upper Floor: 597 sq.ft.  
 Lower Floor: 78 sq.ft.  
**Total: 1,272 sq.ft.**

Garage/Util.: 479 sq.ft.  
 Patio: 65 sq.ft.  
 Balcony: 129 sq.ft.  
**Total Extras: 673 sq.ft.**



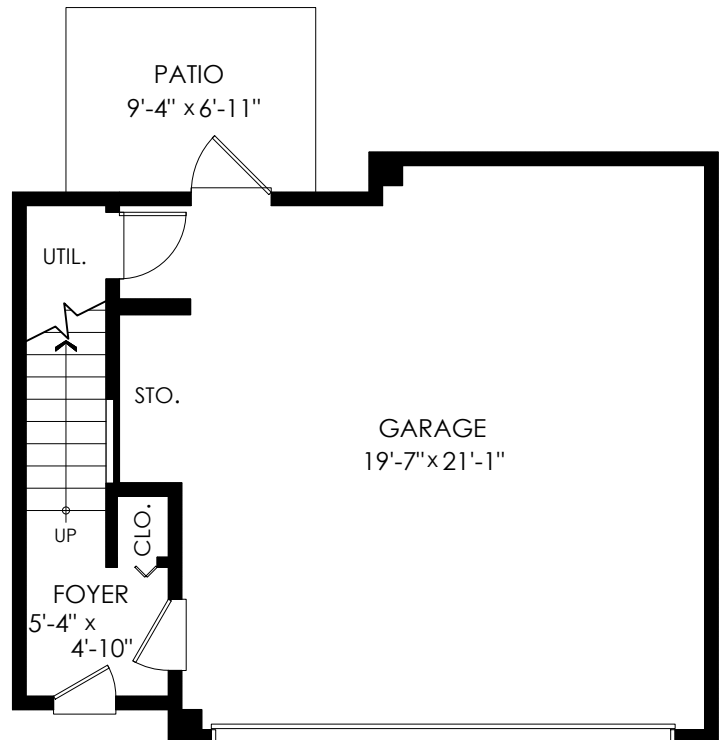
### Upper Floor Plan

Floor Area: 597 sq.ft.  
 Ceiling Height: 8'-0"



### Main Floor Plan

Floor Area: 597 sq.ft.  
 Ceiling Height: 9'-0"



### Entry Floor Plan

Floor Area: 78 sq.ft.  
 Ceiling Height: 8'-7"



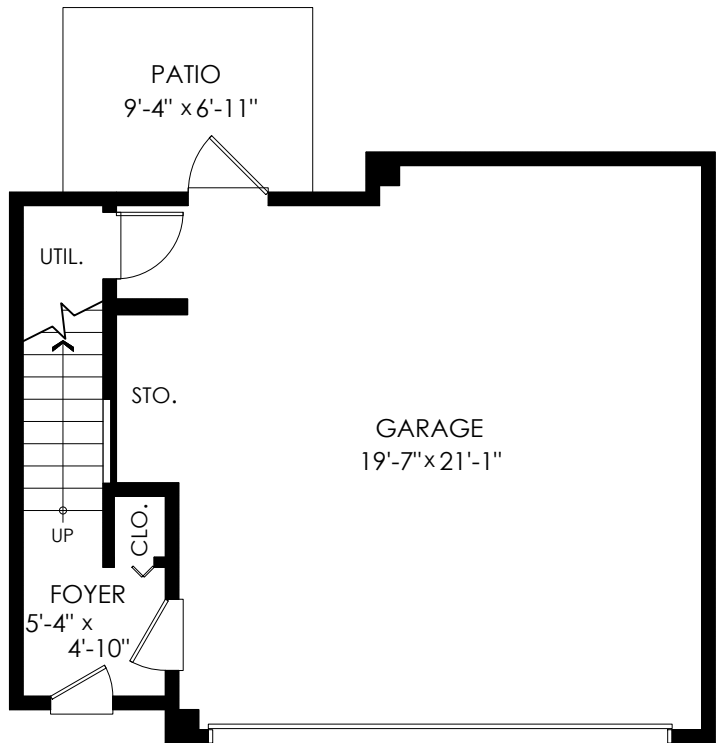
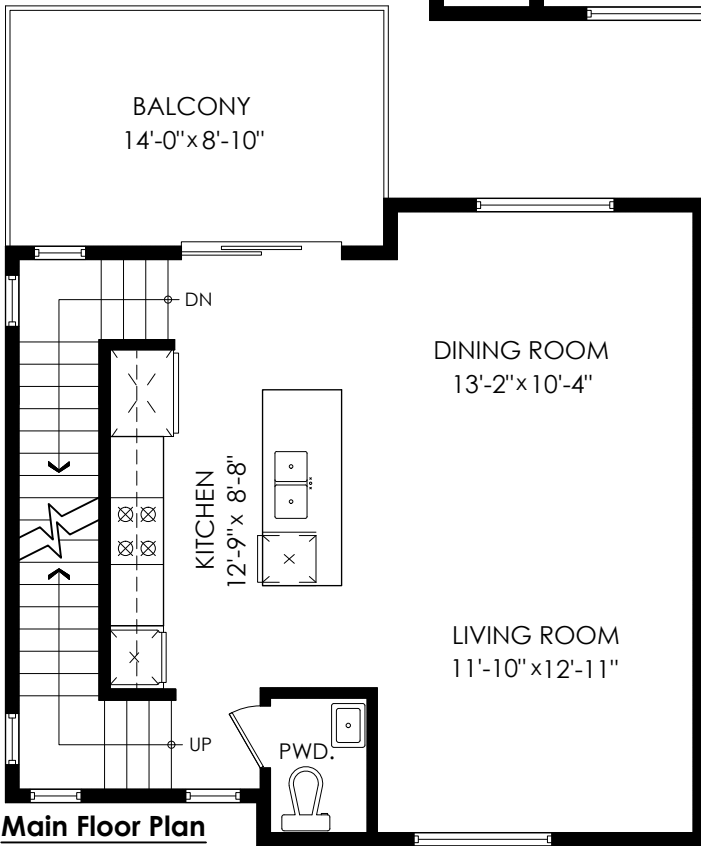
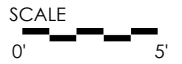
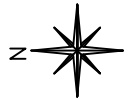
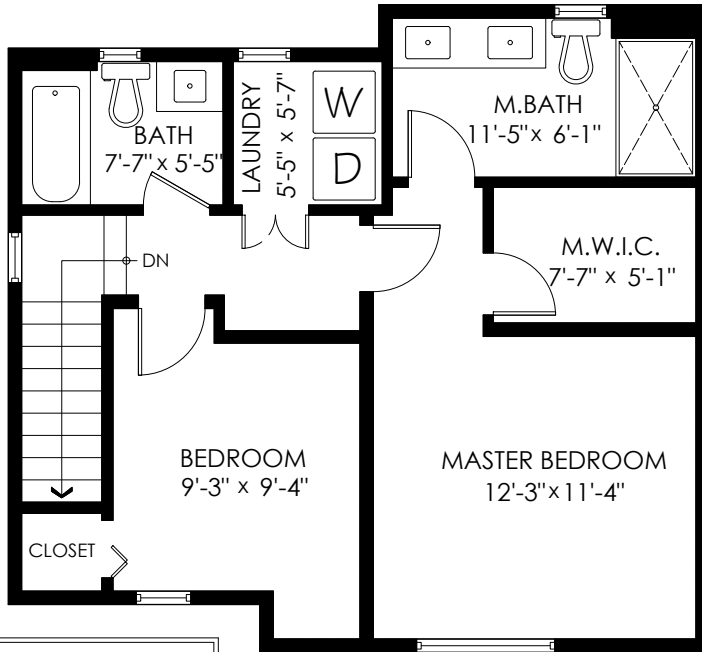
TREELAND REALTY

Measurements, Design & Scanning | 604-329-5788

# 34-7848 209 St, Langley

Main Floor:	597 sq.ft.
Upper Floor:	597 sq.ft.
Lower Floor:	78 sq.ft.
<b>Total:</b>	<b>1,272 sq.ft.</b>

Garage/Util.:	479 sq.ft.
Patio:	65 sq.ft.
Balcony:	129 sq.ft.
<b>Total Extras:</b>	<b>673 sq.ft.</b>



**Entry Floor Plan**

Floor Area: 78 sq.ft.  
 Ceiling Height: 8'-7"



Houses:

Total square footage is calculated to the outside of exterior walls.

Room sizes are dimensioned to the inside of the walls. This is because you need to know what you can fit in that room. When you add up the total of the room sizes it will not equal the total square footage of the property. This method of adding up room sizes will not account for wall thickness, interior hallways, exterior wall thickness, closets and many other areas that are included in total sqft.

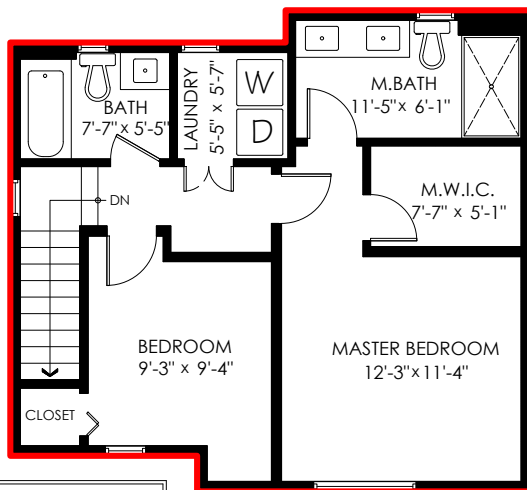
Any space that is not suitable for year-round use or has a ceiling height of less than 4 feet will not be considered living space. An example of this includes a deck, garage or attic. If there isn't heat, insulation or room for an adult to stand, then it will not be included in the living space.

Cantilevered fireplaces, chimneys and plant windows are also not considered living space.

Included in the living space will be the measurements for stair treads for the floor they service as well as the space under the lowest floor's stairs.

Areas open to the floor below (also known as double height ceilings) are not considered living space because there is no floor.

## 34-7848 209 St, Langley

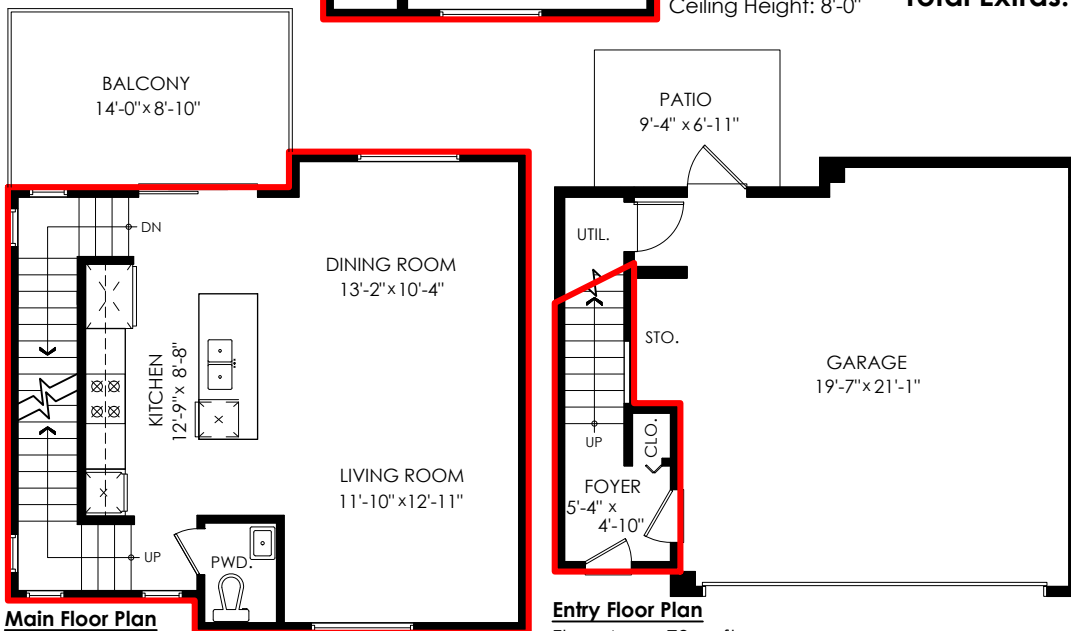


**Upper Floor Plan**

Floor Area: 597 sq.ft.  
Ceiling Height: 8'-0"

Main Floor:	597 sq.ft.
Upper Floor:	597 sq.ft.
Lower Floor:	78 sq.ft.
<b>Total:</b>	<b>1,272 sq.ft.</b>

Garage/Util.:	479 sq.ft.
Patio:	65 sq.ft.
Balcony:	129 sq.ft.
<b>Total Extras:</b>	<b>673 sq.ft.</b>



**Main Floor Plan**

Floor Area: 597 sq.ft.  
Ceiling Height: 9'-0"

**Entry Floor Plan**

Floor Area: 78 sq.ft.  
Ceiling Height: 8'-7"