

Caileigh Anderson

604-323-3273

caileighanderson@gmail.com

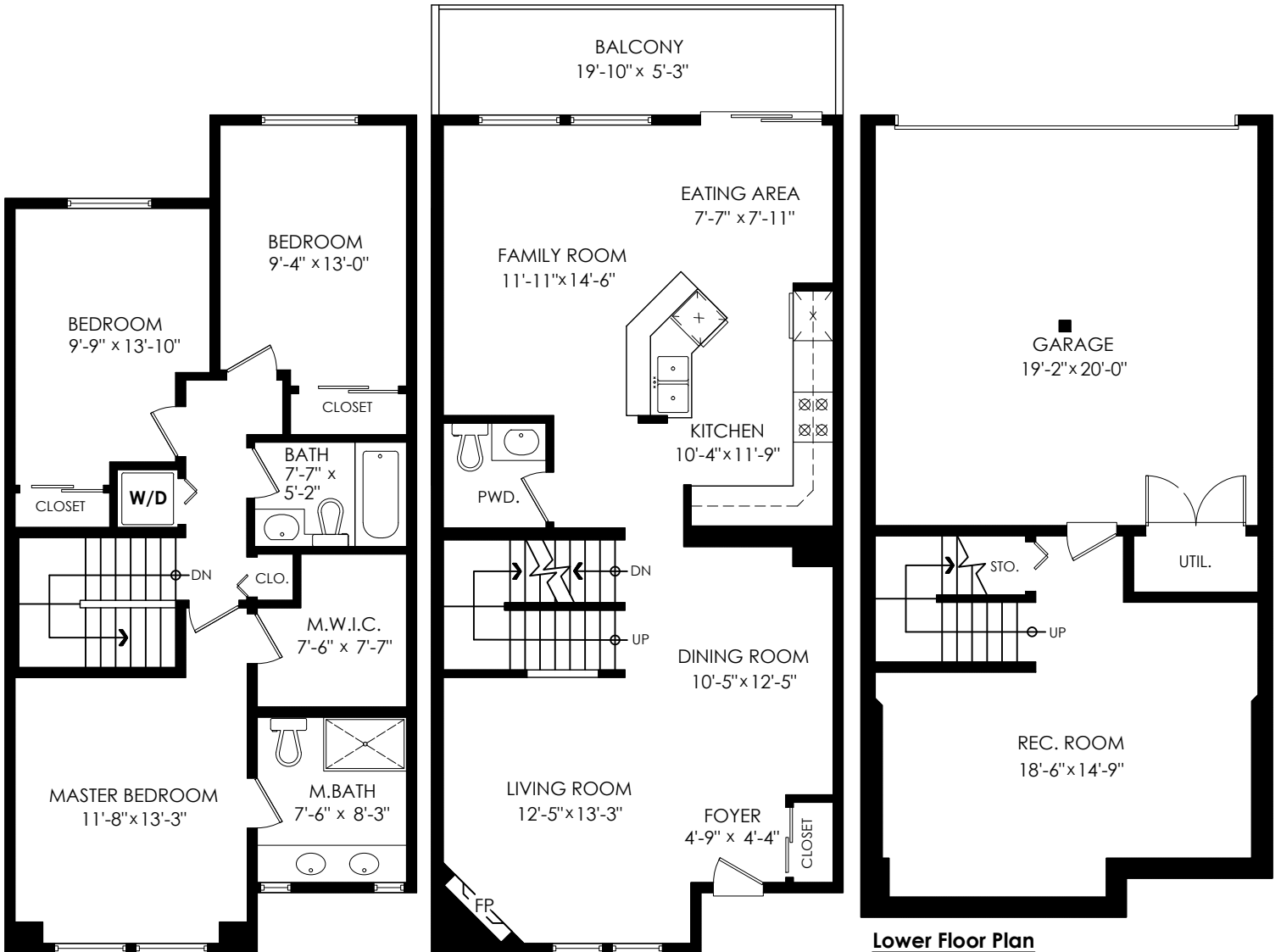
www.caiaanderson.com



25-20449 66 Ave,
Langley

Main Floor:	841 sq.ft.
Upper Floor:	796 sq.ft.
Lower Floor:	389 sq.ft.
Total:	2,026 sq.ft.

Garage:	424 sq.ft.
Balcony:	105 sq.ft.
Total Extras:	529 sq.ft.



Upper Floor Plan

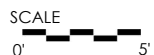
Floor Area: 796 sq.ft.
Ceiling Height: 8'

Main Floor Plan

Floor Area: 841 sq.ft.
Ceiling Height: 9'

Lower Floor Plan

Floor Area: 389 sq.ft.
Ceiling Height: 8'-6"



cotala

E&O Insured. Total square foot calculated to gross unit area. SQFT based on interior measurements to exterior walls, not taken from original blueprints, may include unfinished area. This is for marketing purposes only and is not intended for architectural/construction use. All details, sizes & placements should be considered approximate within +/- 2% tolerance. www.PixlWorks.com

Measurements, Design & Scanning | 604-329-5788



TREELAND REALTY

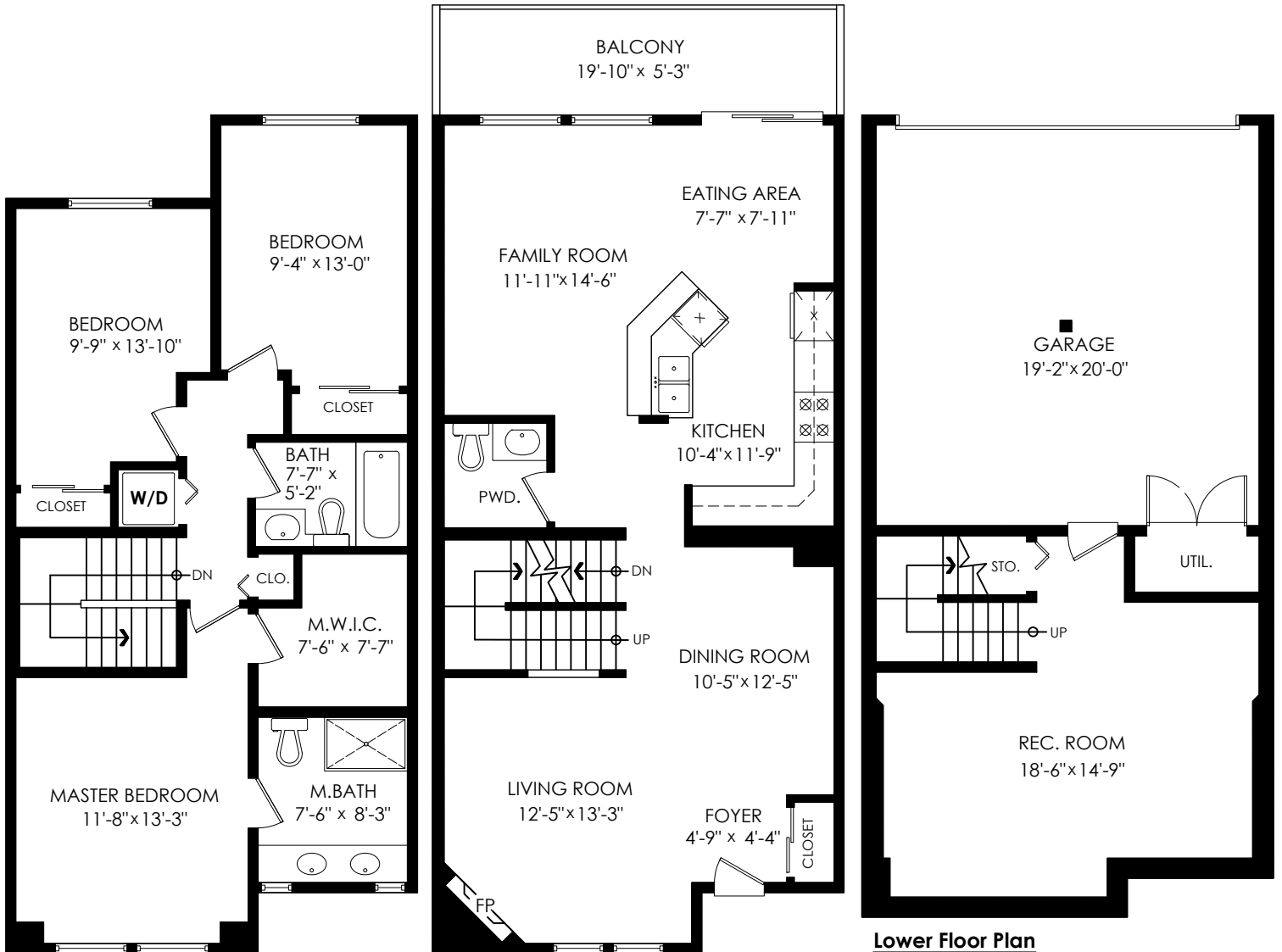


25-20449 66 Ave, Langley



Main Floor:	841 sq.ft.
Upper Floor:	796 sq.ft.
Lower Floor:	389 sq.ft.
Total:	2,026 sq.ft.

Garage:	424 sq.ft.
Balcony:	105 sq.ft.
Total Extras:	529 sq.ft.



Upper Floor Plan

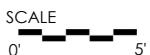
Floor Area: 796 sq.ft.
Ceiling Height: 8'

Main Floor Plan

Floor Area: 841 sq.ft.
Ceiling Height: 9'

Lower Floor Plan

Floor Area: 389 sq.ft.
Ceiling Height: 8'-6"



cotala

E&O Insured. Total square foot calculated to gross unit area. SQFT based on interior measurements to exterior walls, not taken from original blueprints, may include unfinished area. This is for marketing purposes only and is not intended for architectural/construction use. All details, sizes & placements should be considered approximate within +/- 2% tolerance. www.PixlWorks.com

Measurements, Design & Scanning | 604-329-5788





Houses:

Total square footage is calculated to the outside of exterior walls.

Room sizes are dimensioned to the inside of the walls. This is because you need to know what you can fit in that room. When you add up the total of the room sizes it will not equal the total square footage of the property. This method of adding up room sizes will not account for wall thickness, interior hallways, exterior wall thickness, closets and many other areas that are included in total sqft.

Any space that is not suitable for year-round use or has a ceiling height of less than 4 feet will not be considered living space. An example of this includes a deck, garage or attic. If there isn't heat, insulation or room for an adult to stand, then it will not be included in the living space.

Cantilevered fireplaces, chimneys and plant windows are also not considered living space.

Included in the living space will be the measurements for stair treads for the floor they service as well as the space under the lowest floor's stairs.

Areas open to the floor below (also known as double height ceilings) are not considered living space because there is no floor.

Main Floor:	841 sq.ft.
Upper Floor:	796 sq.ft.
Lower Floor:	389 sq.ft.
Total:	2,026 sq.ft.

**25-20449 66 Ave,
Langley**

Garage:	424 sq.ft.
Balcony:	105 sq.ft.
Total Extras:	529 sq.ft.

