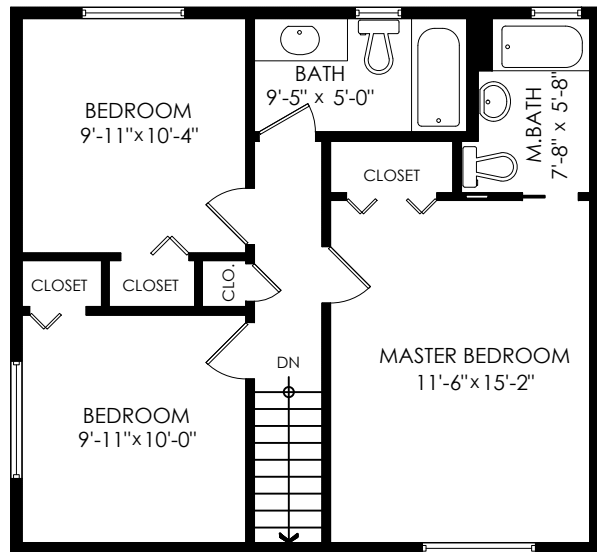


# 26458 29B Ave, Aldergrove

Main Floor: 667 sq.ft.  
Upper Floor: 633 sq.ft.  
Lower Floor: 667 sq.ft.  
**Total Livable: 1,967 sq.ft.**

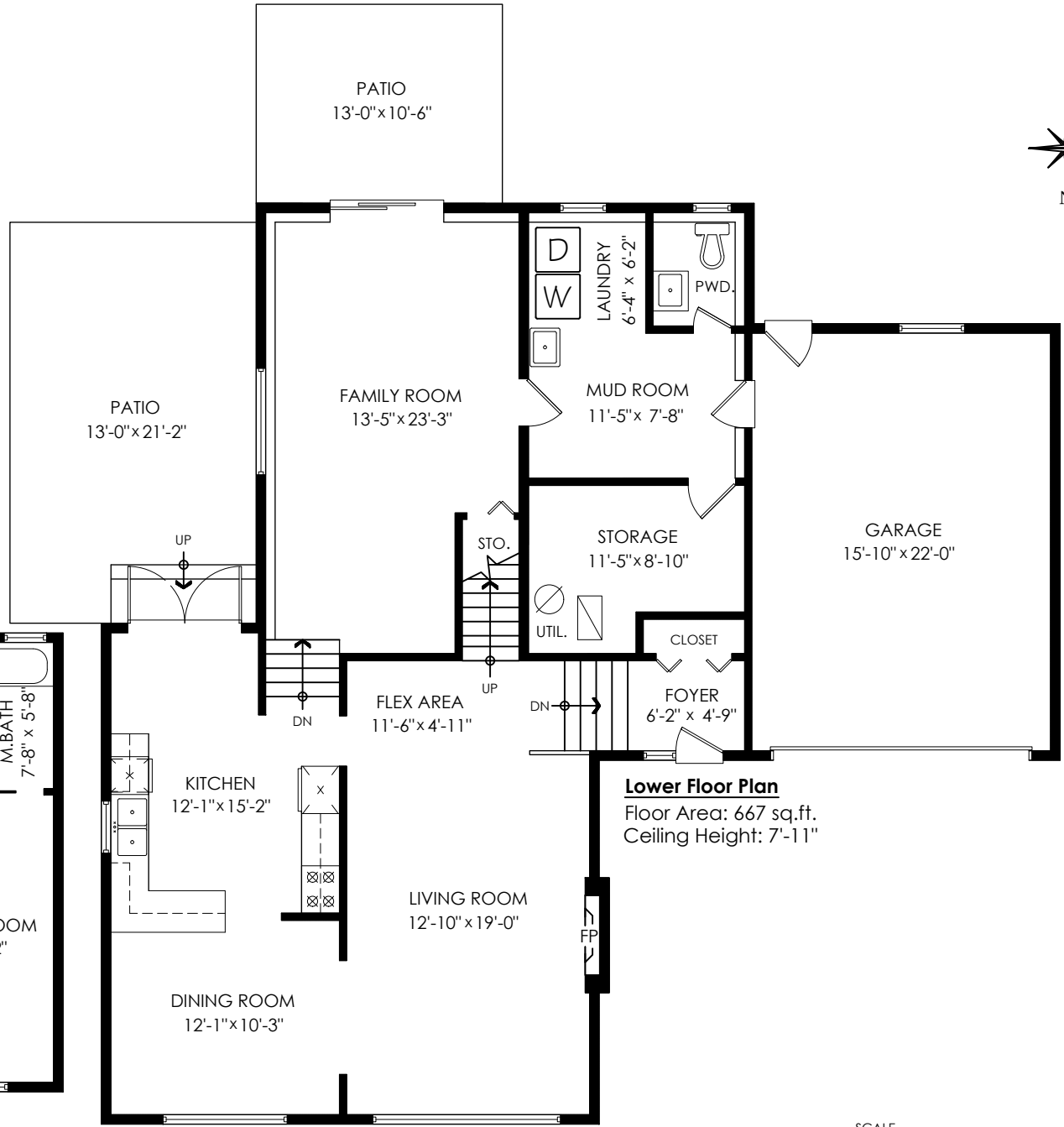
Garage: 375 sq.ft.  
**Grand Total: 2,342 sq.ft.**

Patios: 412 sq.ft.



**Upper Floor Plan**

Floor Area: 633 sq.ft.  
Ceiling Height: 8'-1"

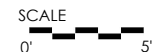


**Main Floor Plan**

Floor Area: 667 sq.ft.  
Ceiling Height: 8'

**Lower Floor Plan**

Floor Area: 667 sq.ft.  
Ceiling Height: 7'-11"



**MEASURED ON: (2021-05-14)**

Measuring, Scanning, Design | 604-329-5788



E&O Insured. Total square foot calculated to gross unit area. SQFT based on interior measurements to exterior walls, not taken from original blueprints, may include unfinished area. This is for marketing purposes only and is not intended for architectural/construction use. All details, sizes & placements should be considered approximate within +/- 2% tolerance. [www.PixelWorks.com](http://www.PixelWorks.com)