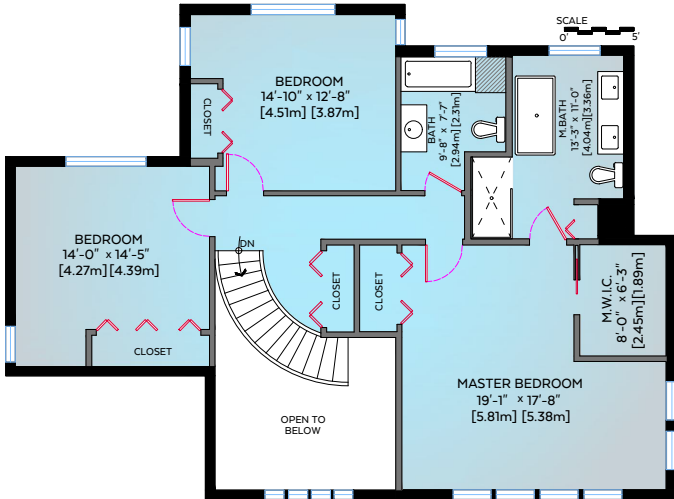


4664 Lockehaven Place, North Vancouver, B.C.

Main Floor:	1,784 sq.ft.	165.74 sq.m.
Upper Floor:	1,214 sq.ft.	112.78 sq.m.
Finished Lower Floor:	225 sq.ft.	20.90 sq.m.
Total:	3,223 sq.ft.	299.42 sq.m.

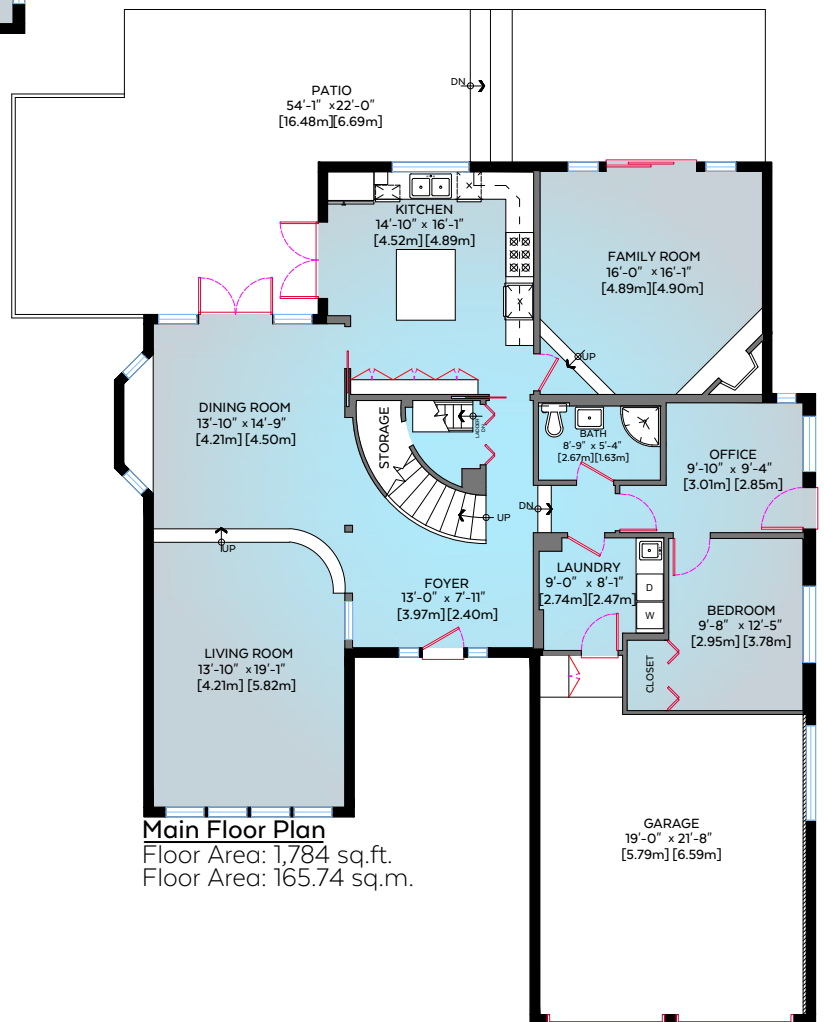
Unfinished Lower Floor:	503 sq.ft.	46.73 sq.m.
Grand Total:	3,726 sq.ft.	346.15 sq.m.

Garage:	487 sq.ft.	45.24 sq.m.
Patio:	922 sq.ft.	85.66 sq.m.
Crawl Space:	538 sq.ft.	49.98 sq.m.
Open To Below:	144 sq.ft.	13.38 sq.m.
Restricted Headroom	318 sq.ft.	29.54 sq.m.



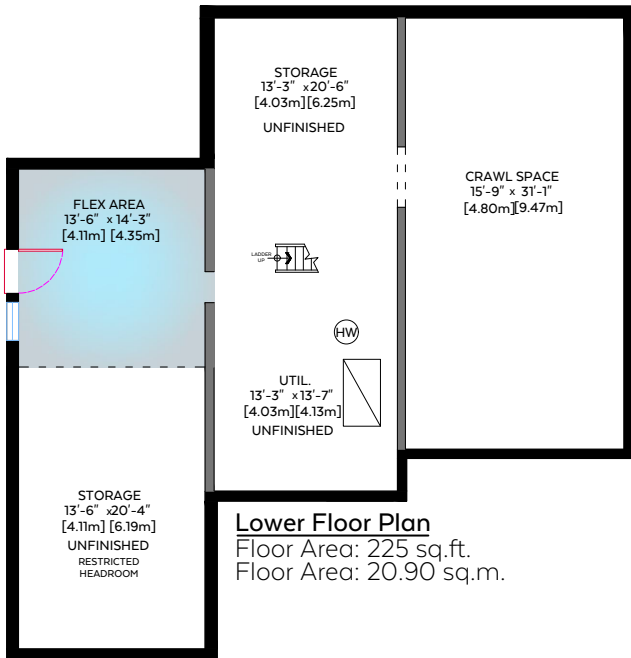
Upper Floor Plan

Floor Area: 1,214 sq.ft.
Floor Area: 112.78 sq.m.



Main Floor Plan

Floor Area: 1,784 sq.ft.
Floor Area: 165.74 sq.m.



Lower Floor Plan

Floor Area: 225 sq.ft.
Floor Area: 20.90 sq.m.