

CHARLIE CAMERON P.R.E.C.

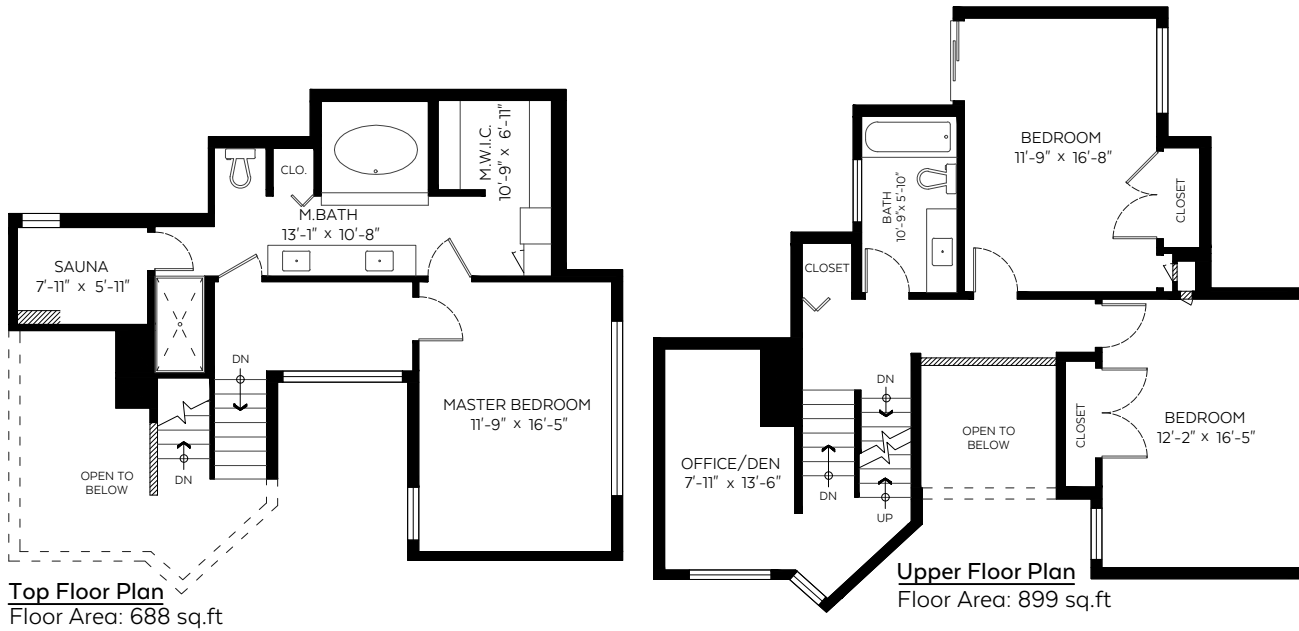
604.780.7653 charlie@charliecameron.com
 Sutton Grp. W.C.R. www.charliecameron.com

5536 Molina Road,
 North Vancouver, B.C.

| | |
|---------------|---------------------|
| Main Floor: | 1,603 sq.ft. |
| Upper Floor: | 899 sq.ft. |
| Top Floor: | 688 sq.ft. |
| Lower Floor: | 644 sq.ft. |
| Total: | 3,834 sq.ft. |

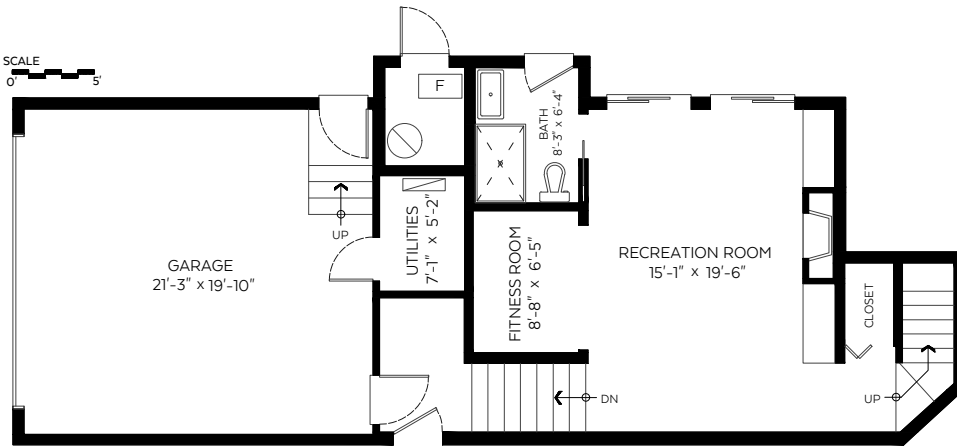
Auxiliary Area

| | |
|------------|------------|
| Garage: | 504 sq.ft. |
| Utilities: | 41 sq.ft. |

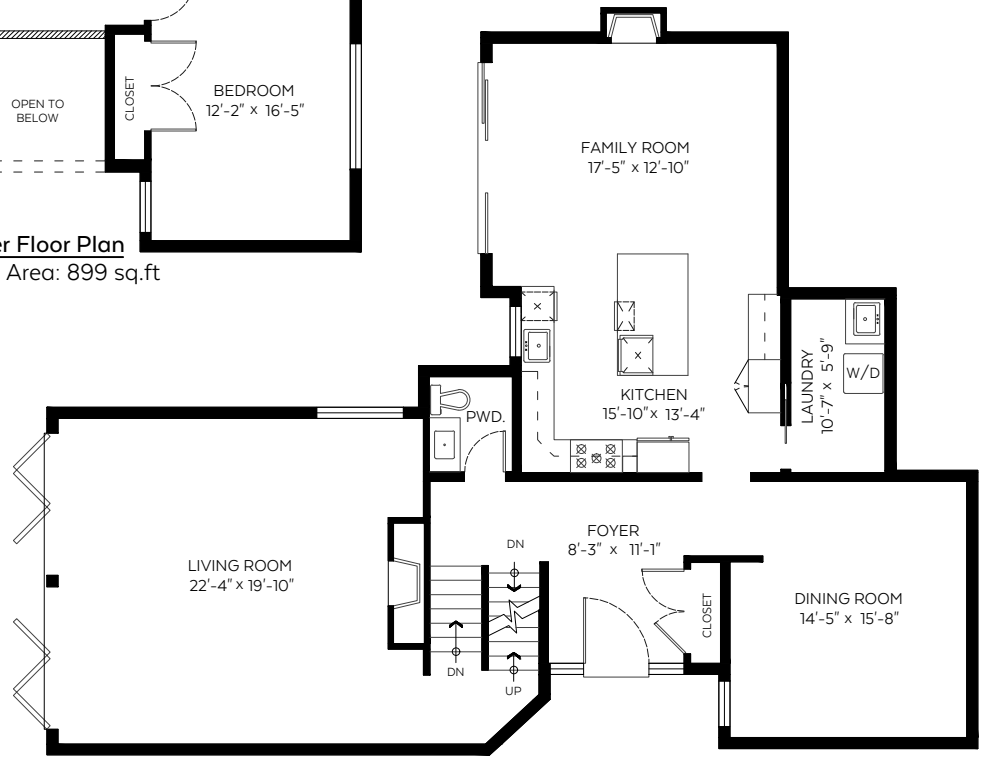


Top Floor Plan
 Floor Area: 688 sq.ft

Upper Floor Plan
 Floor Area: 899 sq.ft



Lower Floor Plan
 Floor Area: 644 sq.ft



Main Floor Plan
 Floor Area: 1,603 sq.ft



Measured on: June 12, 2017



The floor plan is not suitable for architectural/construction and is covered under E&O. © Excelsior Measuring Inc. 2017. All rights reserved for Excelsior Measuring Inc. Users shall not publish and distribute such material (in whole or in part) and/or incorporate it in other works in any form.

