

**311 - 1647 East Pender Street Vancouver**

**TOTAL FLOOR AREA**

**EXCLUDED AREA**

MAIN FLOOR : 450 SQ. FT.

ABOVE MAIN FLOOR : 477 SQ. FT.

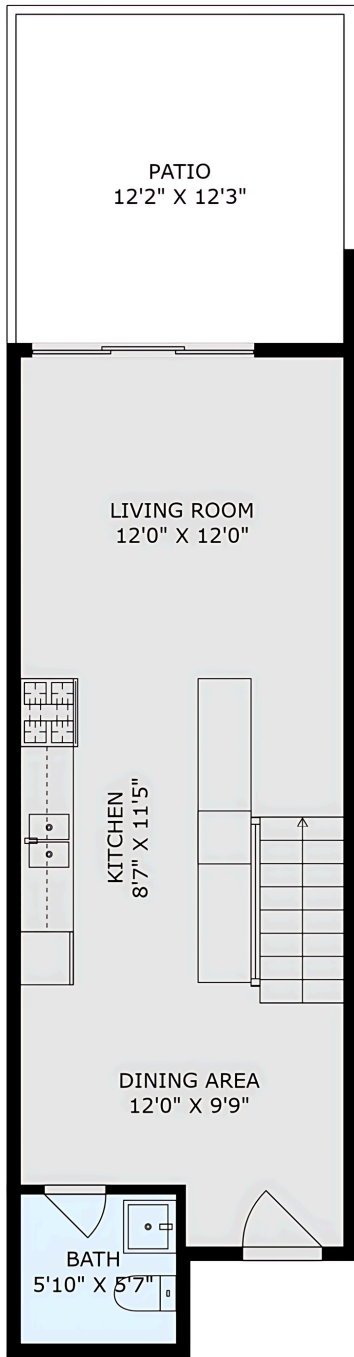
TOP FLOOR : 355 SQ. FT.

BALCONY : 119 SQ. FT.

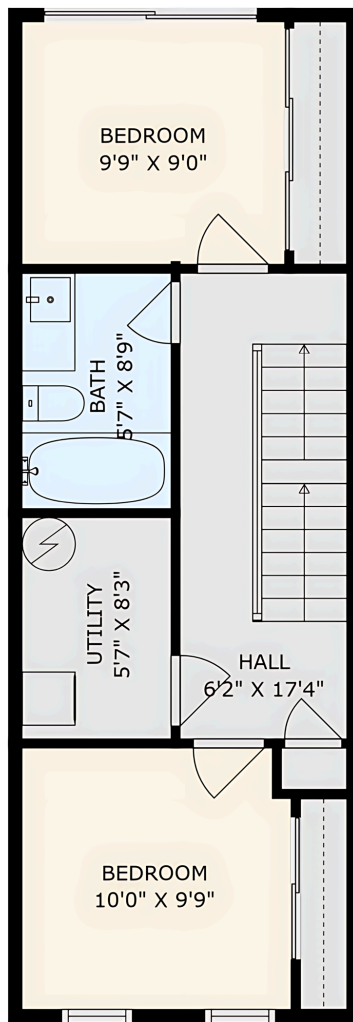
PATIO : 154 SQ. FT.

**TOTAL LIVING AREA : 1282 SQ. FT. TOTAL EXCLUDED AREA : 273 SQ. FT.**

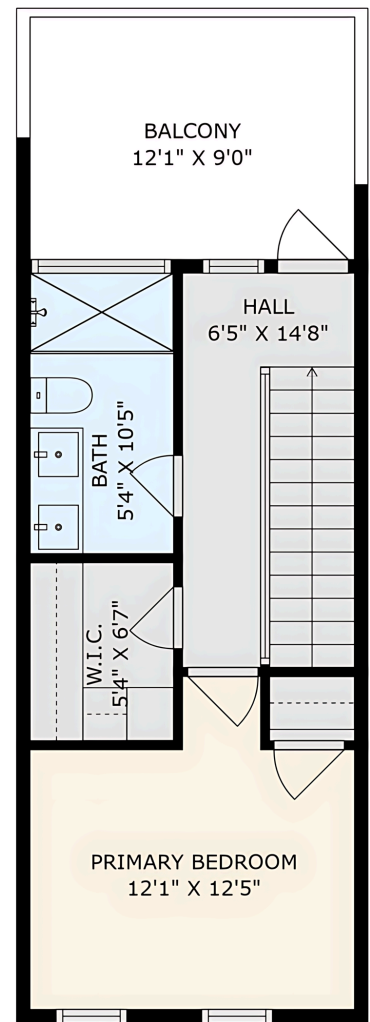
 3 bedrooms
  2.5 bathrooms
  1555 total sqft
  1282 Gross Living Area sqft



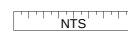
MAIN FLOOR



ABOVE MAIN FLOOR



TOP FLOOR



The floor plan and the measurements are approximate and are to be strictly used for advertising usage only. Not suitable for architectural or construction. E&O Insured.