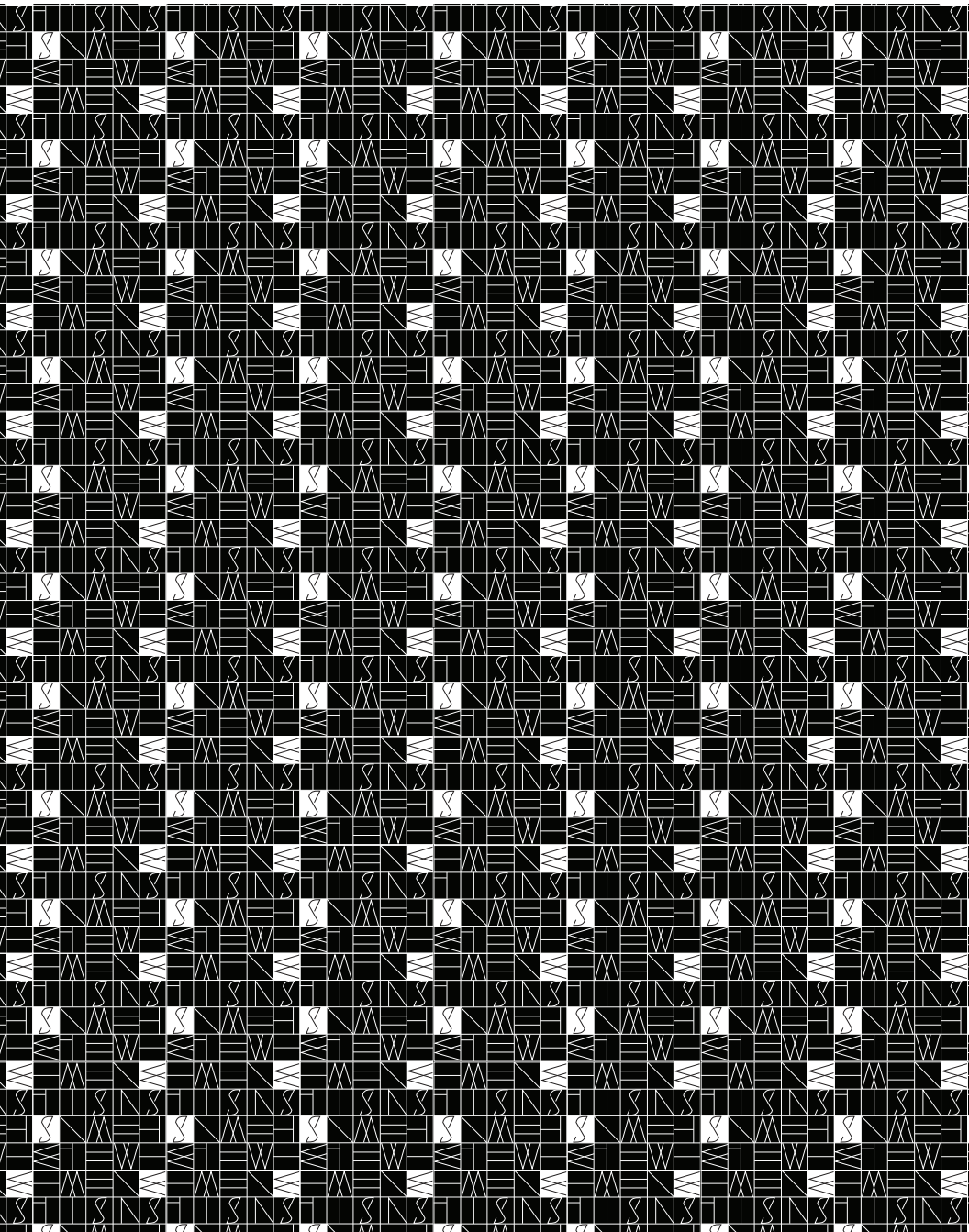


W





(Woll 'sin) *n.*

1. A traditional toast (not the bread kind) to good health and happiness: *Zum Wohlsein!!*
2. Being happy, healthy and generally comfy.
3. Welcome to your new East Van home, the heart of Brewery Creek!

HERE'S TO THE START OF
SOMETHING NEW.

SNAPPY DRESSERS.
IT'S ALWAYS BEEN A MOUNT PLEASANT THING.



HERE'S TO
HAVING BELIEF
AND COURAGE
IN WHAT YOU
MAKE.



THEN AND NOW



WELCOME TO BREWERY CREEK – VANCOUVER'S FIRST SUBURB

It's true. Over 100 years ago, the abundant supply of fresh water in the area brought first the breweries and then the people who worked at them to make this a place to live and work. Today, this vibrant section of Vancouver is home to an exciting mix of old and new architecture and draws an eclectic group of residents who love its independent spirit. What was once a "suburb" is now at the centre of it all, and at its centre is Wohlsein.



MEET THE NEIGHBOURS

Record stores. Parks. Second-hand bookshops. Coffee shops. Restaurants. Breweries. Cute boutiques. The list of places you can go and things to do in your neighbourhood goes on and on and on. Wohlsein is centrally located, walking distance to all action, but just far enough away to make your corner of your neighbourhood a little quieter.

HERE'S TO
A WALKABLE
HOOD WITH
EVERYTHING
YOU NEED.





BOUTIQUE HOMES STYLED FOR HOW YOU LIKE TO LIVE



HIGH END FINISHES WITH ORIGINAL STYLE



STYLISH LIVING



EPICUREAN KITCHENS



RAIN WATER SHOWERS



Homes at Wohlsein feature a common roof top patio, to enjoy the expansive view, as well as landscaped play area. Other amenities include a **bike workshop** for tuning up your ride, an **artist's workshop** for creative exploration, and a **resident's lounge** for getting together with family and friends.

The **Wohlsein Collection** homes feature high-quality vintage inspired style, remarkable views, as well as **private roof top** patios in selected homes.

The **Artisan Collection** homes feature 9-foot ceilings throughout creating airy, spacious rooms and **high walls** for displaying artwork.

High quality kitchen appliances include **Bertazzoni** gas oven **ranges** and **Blomberg** fridges for foodie-friendly spaces.

Expansive windows let the sun pour into your home, maximizing the natural light and access to exceptional **views**.

Polished **quartz countertops** create a dramatic highpoint in your kitchen and turn it into a glittering, shining gem.

Innovative architecture by IBI Architect features a **heritage aesthetic** with contemporary **brick patterning**, window wall systems and **spiral staircases**.

REASSURINGLY OLD. REFRESHINGLY NEW.

The interiors at Wohlsein reference the past while making full use of modern cues to create something distinctively contemporary. In the kitchen, a heritage-inspired hexagonal backsplash contrasts modern stainless appliances. The hexagonal tile continues on floors in the bathrooms where along with accents like brushed nickel pulls they juxtapose with a stainless single-basin, under-mount sink to create a singularly modern effect – something distinctly Wohlsein.

HERE'S TO
PEOPLE WHO
WANT A PLACE
LIKE NO
OTHER.



THE
WOHLSEIN
MT PLEASANT ■ E6 & SCOTIA

ORIGINAL STYLE

THE BUILDING

Located at the corner of 6th & Scotia, Wohlsein is unmistakably at the heart of the action, but just enough removed to be a peaceful sanctuary. Solid concrete construction brings peace of mind while its heritage brick cladding blends seamlessly with the heritage buildings with which it shares 6th Avenue. Built to LEED standards with architecture by IBI/HB Architects, Wohlsein is a high quality build from MetroCan construction with over 40 years in residential construction experience.



JAMESON HOUSE - VANCOUVER, BC



SESAME - VANCOUVER, BC



SHAUGHNESSY MANSIONS - VANCOUVER, BC

JAMESON
DEVELOPMENT
CORP

Jameson Development firm's commitment to architecture, sustainability, financial feasibility and project execution is driven by respect for heritage, integration and longevity. Owned and operated by Anthony John and Thomas Pappajohn, the firm has been involved in the acquisition, restoration, development and property management of buildings in Vancouver for over 20 years.



IBI Group, established in 1974, is a globally integrated architecture, planning, engineering, and technology firm with over 2,600 professionals in 70+ offices around the world. From high-rises to industrial buildings, schools to state-of-the-art hospitals, transit stations to highways, airports to toll systems, bike lanes to parks, we design every aspect of a truly integrated city for people to live, work, and play.

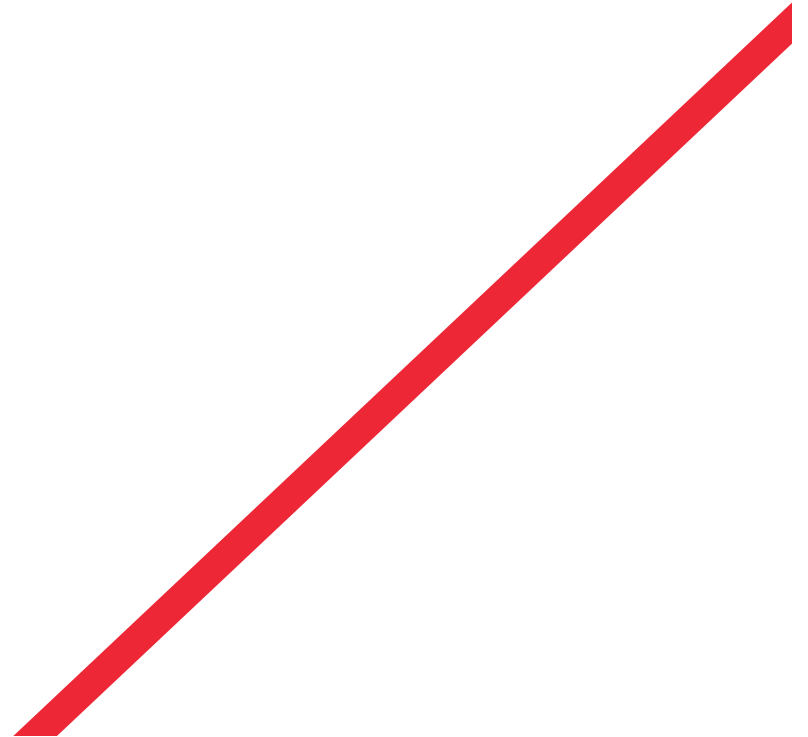


Magnum Projects sets the standard for success in real estate sales and marketing. Whether you are making your first purchase or are an experienced investor, the Magnum team's industry specialists know how to support your needs.

From ongoing communication to financing advice, progress updates to after-sales follow up, Magnum adds confidence to your buying experience.



For more than 40 years, Metro-Can Construction Ltd. has been in the business of building. Through their multi-residential, commercial, industrial and institutional work, they have helped shape the skyline of Vancouver. Metro-Can is among the top 50 general contractors in Canada and among the top five headquartered in B.C., completing over 280 projects in all segments of the market, including commercial, residential, recreational and industrial projects.





— THE —
WOHLSEIN

MT PLEASANT ■ E6 & SCOTIA

Display Home:
311 East 6th Ave, East Van
Call 604.558.0899

LiveAtEast6th.com