

1542 McNair Drive,
North Vancouver, B.C.

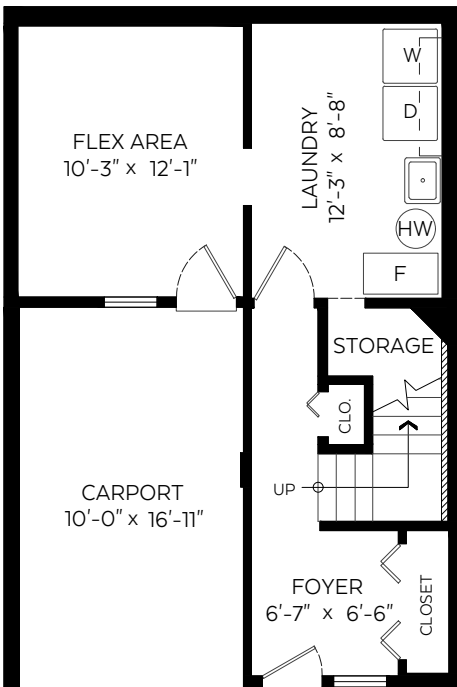
Main Floor:	656 sq.ft.
Upper Floor:	656 sq.ft.
Lower Floor:	435 sq.ft.

Total: 1,747 sq.ft.

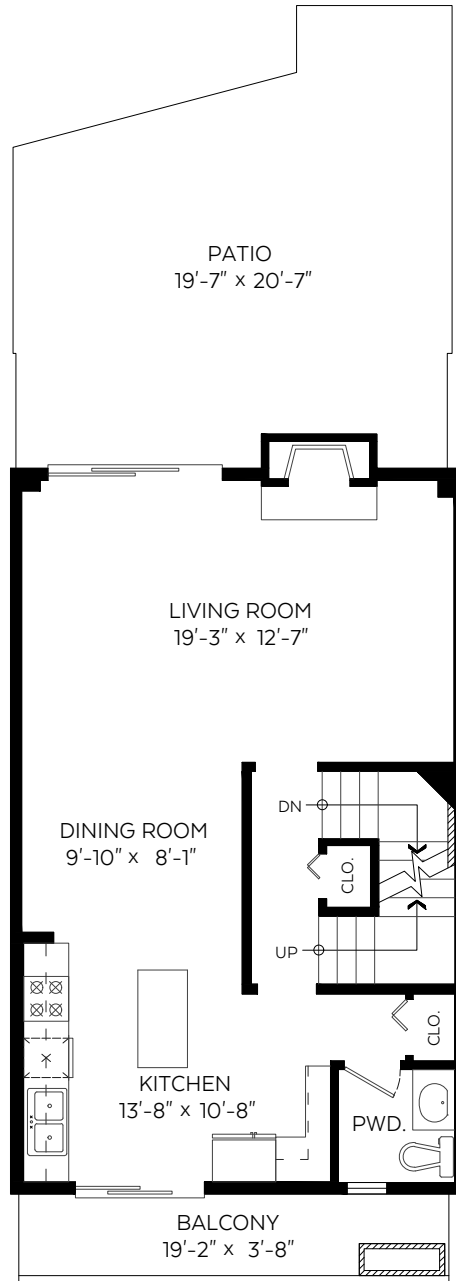
Auxiliary Area

Carport:	180 sq.ft.
Patio:	343 sq.ft.
Balcony:	75 sq.ft.

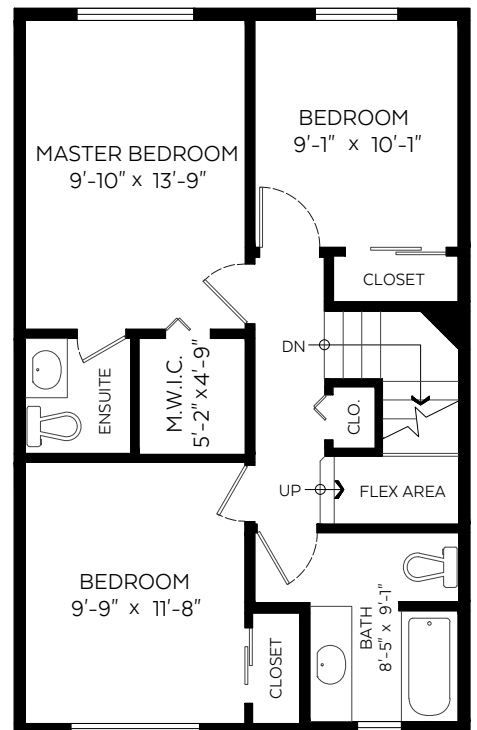
SCALE
0' 5'



Lower Floor Plan
Floor Area: 435 sq.ft.
Ceiling Height: 8'



Main Floor Plan
Floor Area: 656 sq.ft.
Ceiling Height: 8'-4"



Upper Floor Plan
Floor Area: 656 sq.ft.
Ceiling Height: 8'

