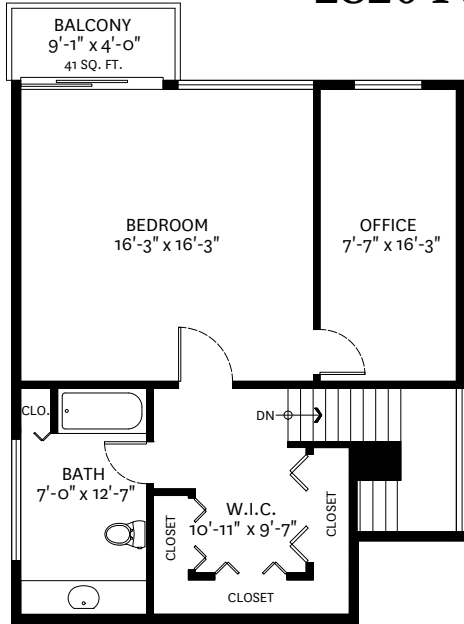
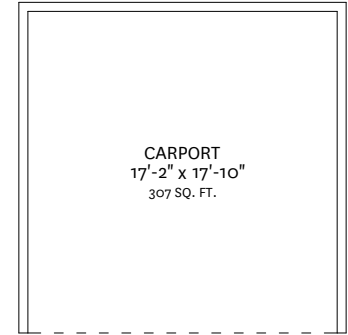


2820 Panorama Drive, North Vancouver, BC

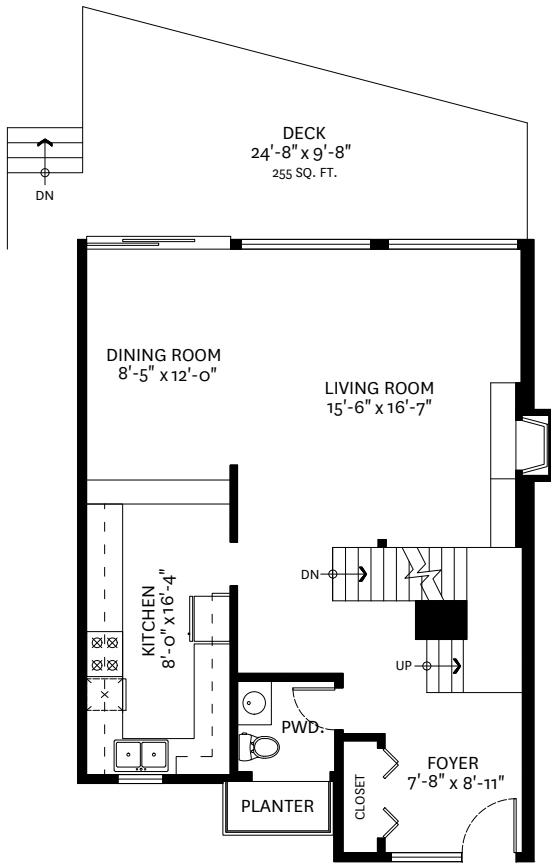


Upper Floor: 738 SQ. FT.
 Main Floor: 814 SQ. FT.
 Lower Floor: 815 SQ. FT.
Total: 2367 SQ. FT.

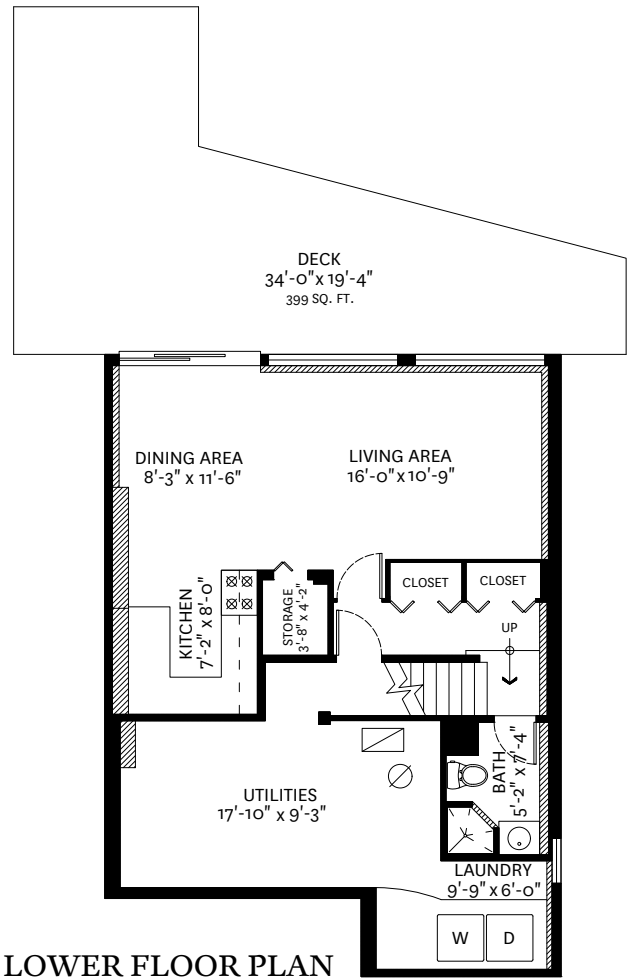


Balcony: 41 SQ. FT.
 Deck: 255 SQ. FT.
 Lower Deck: 399 SQ. FT.
 Carport: 307 SQ. FT.

UPPER FLOOR PLAN
 Vaulted Ceiling Height: 10'-7"



MAIN FLOOR PLAN
 Ceiling Height: 8'-2"



LOWER FLOOR PLAN



Chris Brown PREC*
 778.881.0673
chris@chrisbrownrealestate.ca

floor plan designed by
 ishot.ca Enterprises Inc.
 604-368-7979
<http://ishot.ca>

*PERSONAL REAL ESTATE CORPORATION. THE FLOOR PLAN ILLUSTRATION IS NOT SUITABLE FOR CONSTRUCTION/ARCHITECTURAL PURPOSES. MEASUREMENTS ARE APPROXIMATE AND MAY NOT BE TO SCALE. E&O INSURED.