

Townhome D2

3 Bedroom, 2 1/2 Bath

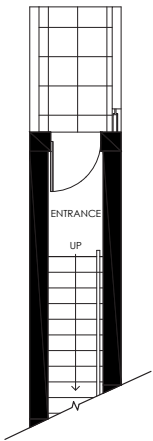
Indoor Living: 1,226 sq.ft.

Outdoor Living: 462 sq.ft.

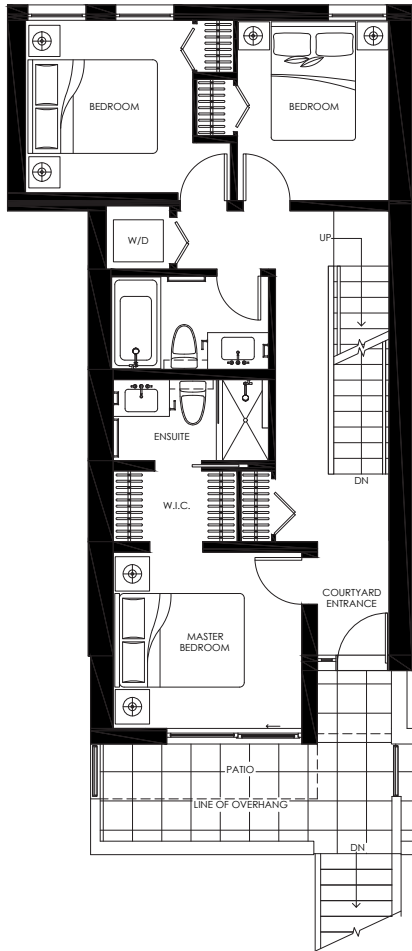
Total Living: 1,688 sq.ft.



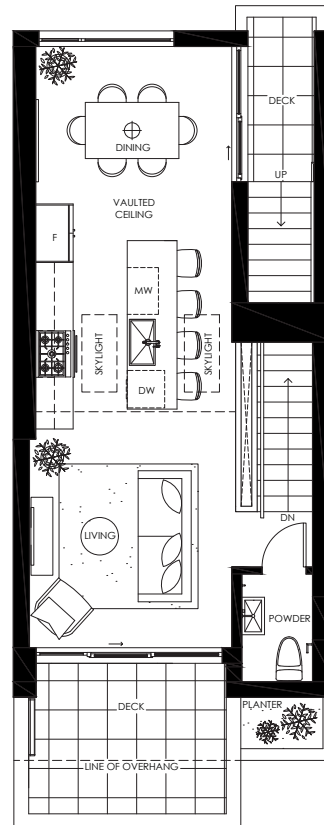
MORRISON
ON THE PARK



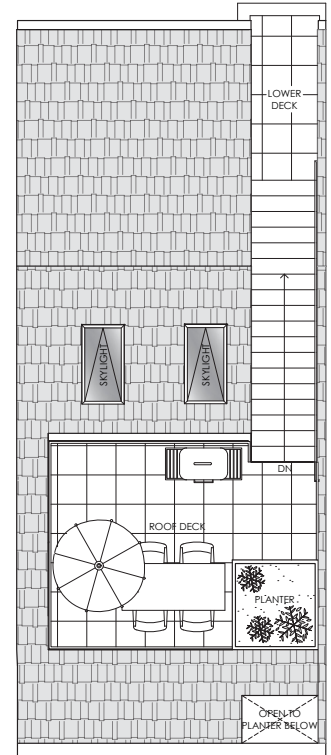
ENTRY



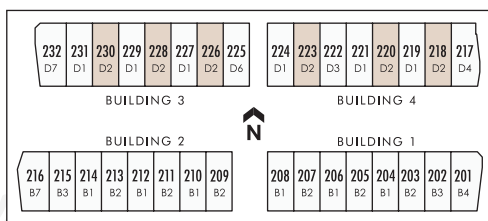
LEVEL 1



LEVEL 2



ROOF TOP



TOWNHOME LEVEL

E 2ND STREET

In a continuing effort to meet the challenge of product improvements, the Developer reserves the right to modify or change plans, specifications, and features without notice. Floorplans, elevations, room sizes, decks, and square footages are approximate and may vary from the actual built home. Floorplans may be oriented differently than displayed. Furniture and décor items are shown as an example only and are not included. Refer to the disclosure statement for specific details. Illustrations and renderings reflect the artist's interpretation of the project and do not take into account the neighbouring building, physical structures, streets and landscape. When built, actual suites, amenities, building interiors, exteriors and views may be noticeably different than what is depicted. This is not an offering for sale. Any such offering can only be made with the applicable disclosure statement and agreement of purchase and sale. Marketing and sales by Pilothouse Real Estate Inc. www.pilothouseinc.com E&OE.

V20-11-10