

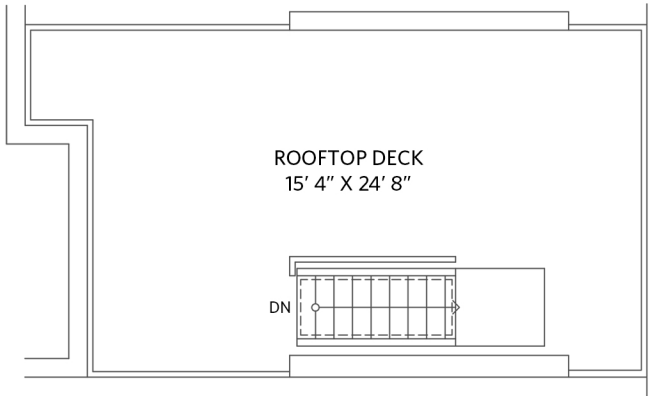
# Chris Brown

778.881.0673    chris@chrisbrownrealestate.ca  
www.chrisbrownrealestate.ca

## 633 Victoria Drive, Vancouver

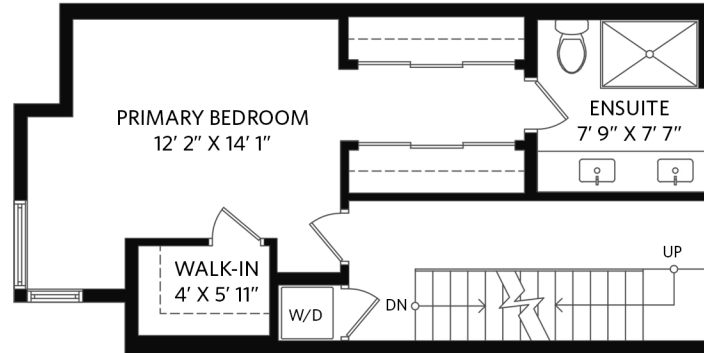
3 bedrooms + 2 1/2 bathrooms

### Rooftop Deck - 412 sq.ft.



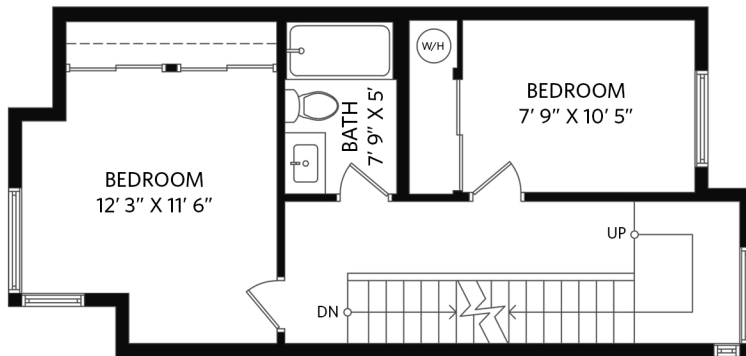
### Level Three - 475 sq.ft.

Ceiling height - 9' 0"



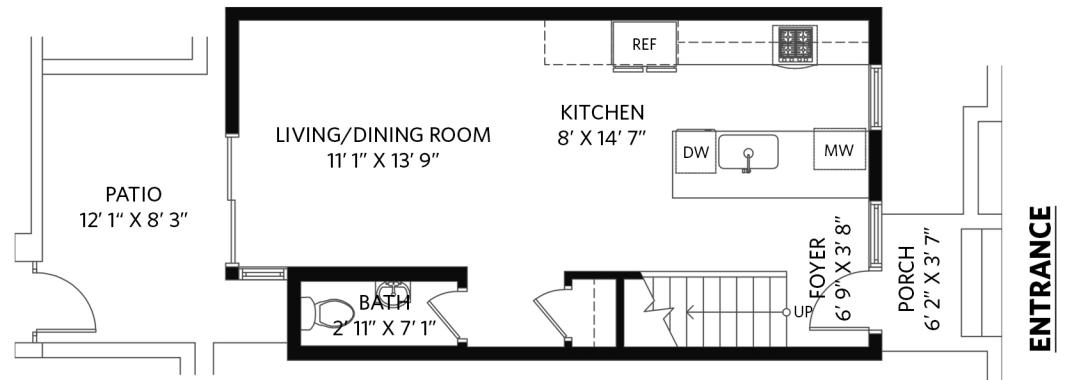
### Level Two - 486 sq.ft.

Ceiling height - 9' 0"



### Level One - 455 sq.ft.

Ceiling height - 9' 0"



**stilhavn**  
REAL ESTATE SERVICES

www.OPTIMUMFLOORPLANS.com

4K Matterport Tours

2D & 3D Floor Plans

604-729-5033



Floor plan measurements, dimensions, square footage, existing structures & features are approximations and for illustrative purposes only. We make no guarantee, warranty, or representation, expressed or implied, as to the accuracy and completeness of this rendering. Independent verification is recommended. E&O Insured for \$1,000,000