

4609 CULLODEN STREET

VANCOUVER, BC



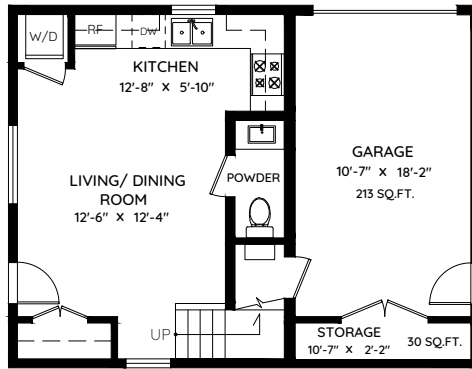
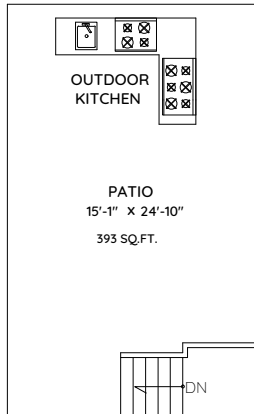
WWW.THEROCKELGROUP.COM

MAIN 1,357 SQ.FT.
 UPPER 1,135 SQ.FT.
 LOWER 1,357 SQ.FT.

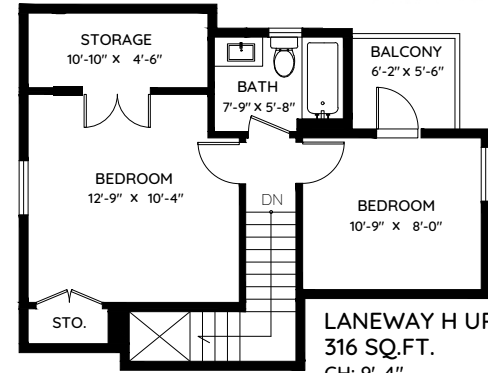
TOTAL 3,849 SQ.FT.

GARAGE 243 SQ.FT.
 DECK 104 SQ.FT.
 PATIO 482 SQ.FT.
 LANEWAY LOWER 377 SQ.FT.
 LANEWAY UPPER 316 SQ.FT.
 LANEWAY BALCONY 37 SQ.FT.

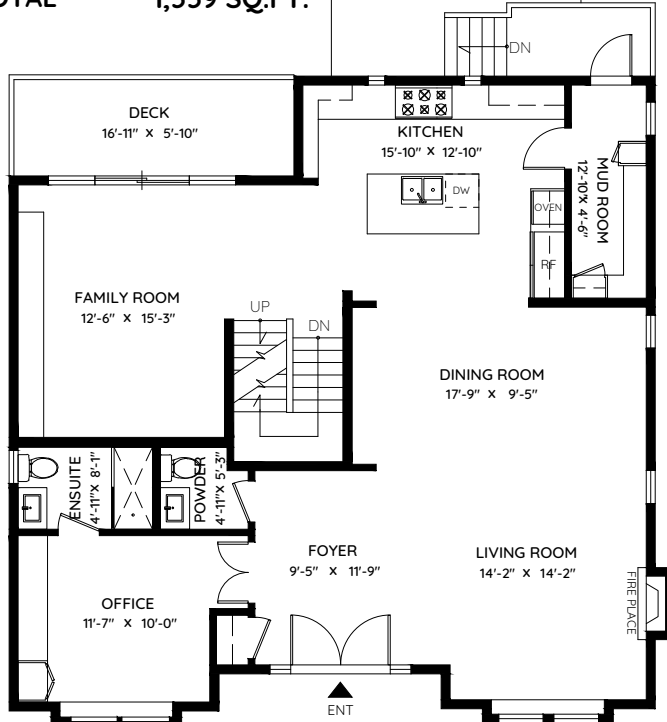
TOTAL 1,559 SQ.FT.



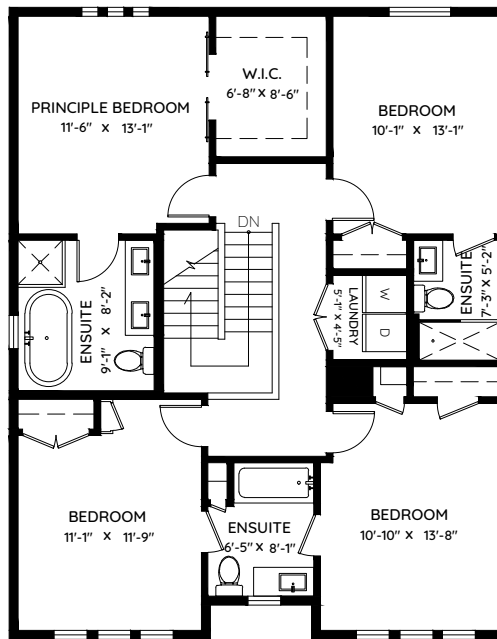
LANEWAY H LOWER
 377 SQ.FT.
 CH: 8'-7"



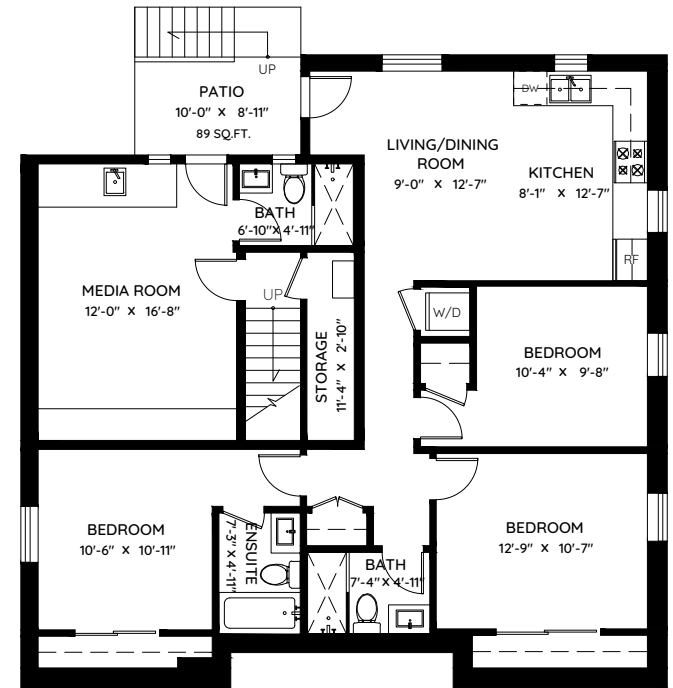
LANEWAY H UPPER
 316 SQ.FT.
 CH: 9'-4"



MAIN FLOOR
 1,357 SQ.FT.
 CH: 10'-7"



UPPER FLOOR
 1,135 SQ.FT.
 CH: 9'-8"



LOWER FLOOR
 1,357 SQ.FT.
 CH: 8'-7"



0 ft 3 ft 5 ft 10 ft

The floor plan and the measurements are approximate and are to be used for advertising usage only.
 Not suitable for architectural or construction. E&O Insured