

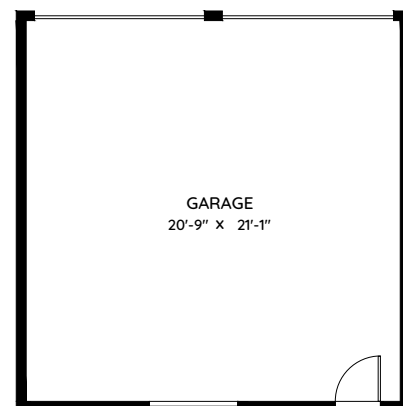
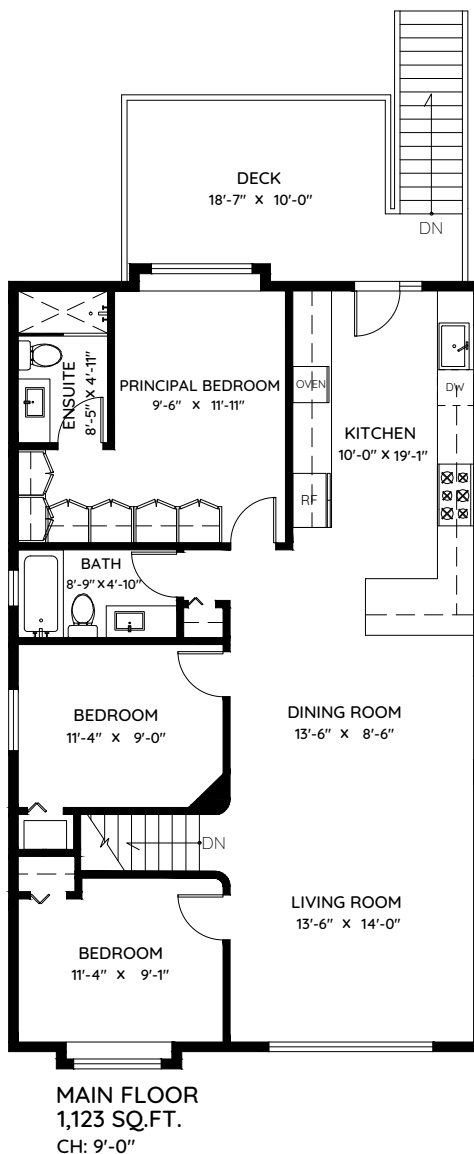
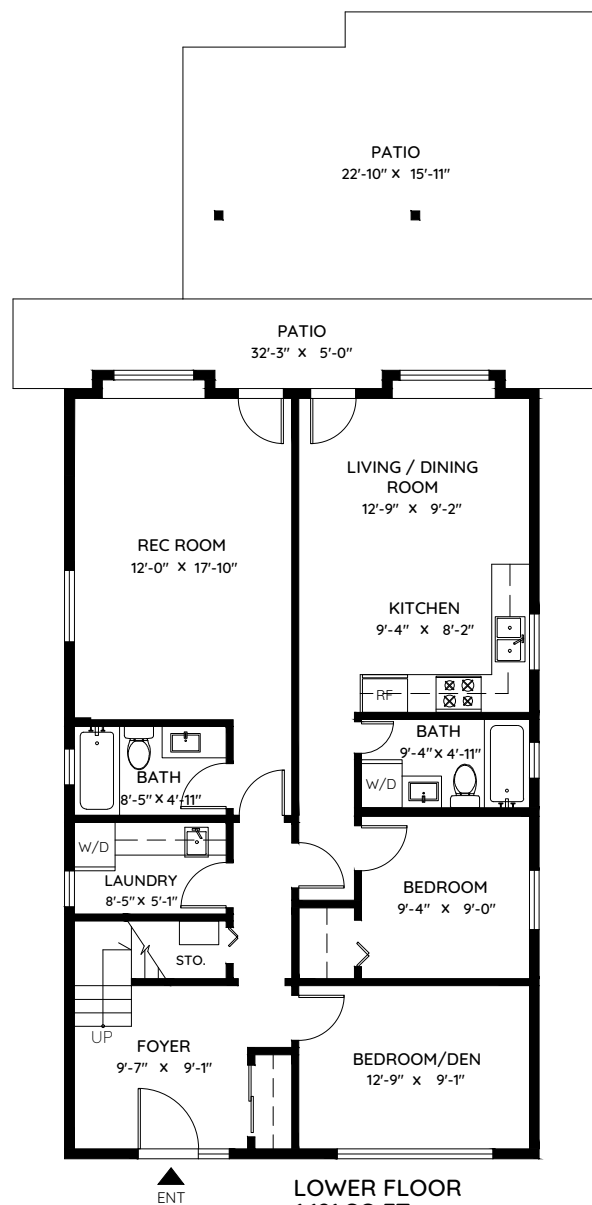
4540 ELGIN STREET

VANCOUVER, BC

MAIN	1,123 SQ.FT.	GARAGE	483 SQ.FT.
LOWER	1,121 SQ.FT.	DECK	207 SQ.FT.
TOTAL	2,244 SQ.FT.	PATIO	491 SQ.FT.
		TOTAL	1,181 SQ.FT.



WWW.THEROCKELGROUP.COM



0 ft 3 ft 5 ft 10 ft

The floor plan and the measurements are approximate and are to be used for advertising usage only.
Not suitable for architectural or construction. E&O Insured