

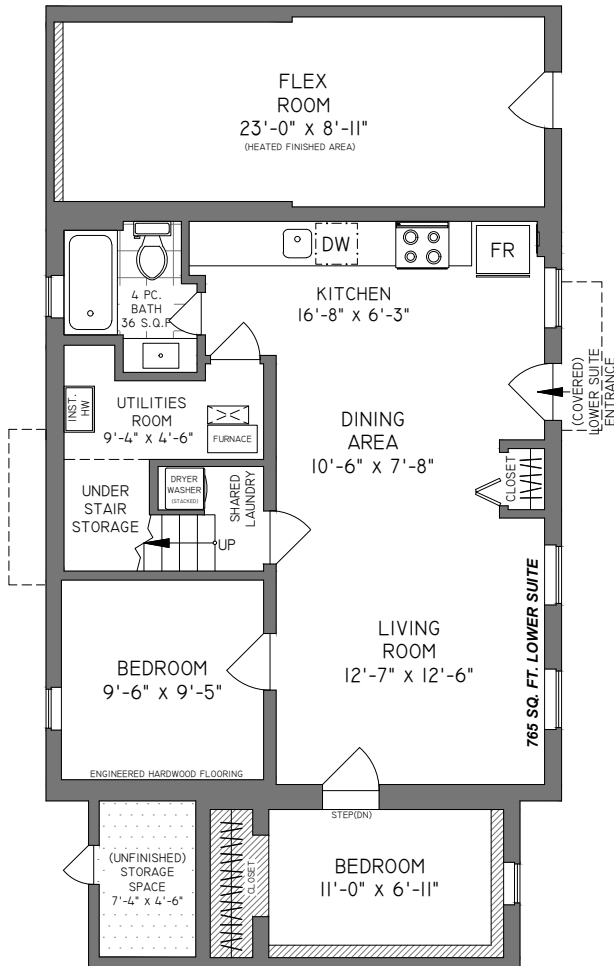


WWW.THEROCKELGROUP.COM  
rockelgroup@macrealty.com  
604-889-6954 / 604-315-5995

## LOWER FLOOR

1021 SQ. FT.

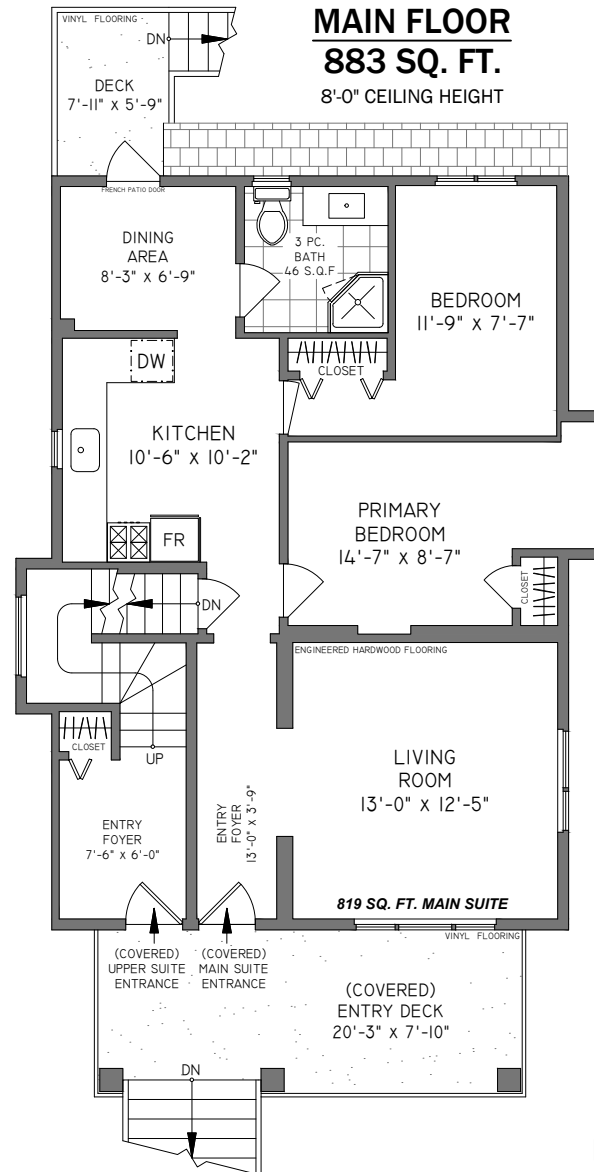
7'-3" CEILING HEIGHT



## MAIN FLOOR

883 SQ. FT.

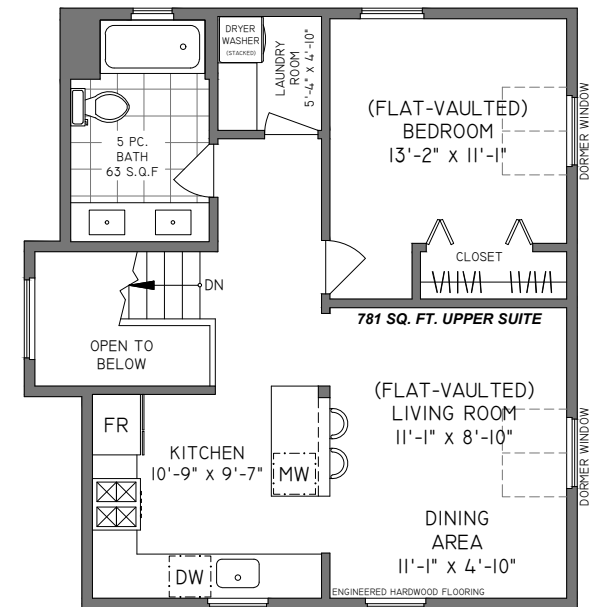
8'-0" CEILING HEIGHT



## UPPER FLOOR

686 SQ. FT.

5'-2" - 8'-4" CEILING HEIGHTS



THE REPRESENTED FLOOR PLANS ARE NOT SUITABLE FOR CONSTRUCTION/ARCHITECTURAL PURPOSES.  
EVERY EFFORT HAS BEEN MADE TO REPRESENT ALL DIMENSION ACCURATELY. E&O INSURED.



Booked on  
the Pixilink App™



### 1003 SEMLIN DRIVE, VANCOUVER

FLOOR	AREA (SQ. FT.)		
	FINISHED	STORAGE	DECK
MAIN	883	-	203
UPPER	686	-	-
LOWER	1021	39	-
<b>TOTAL</b>	<b>2590</b>	<b>39</b>	<b>203</b>