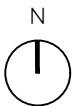
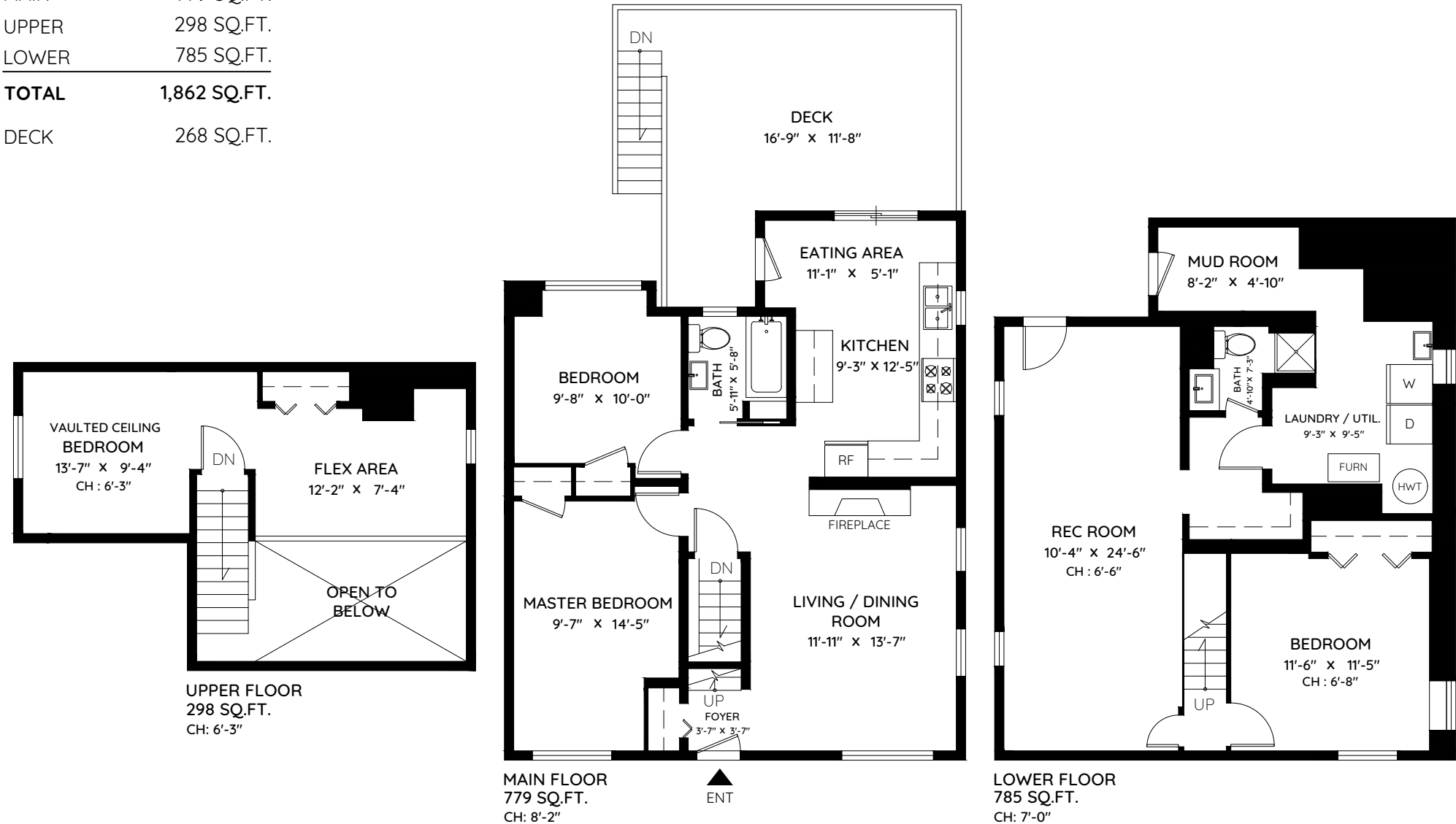


2929 PARKER STREET

VANCOUVER, BC

MAIN	779 SQ.FT.
UPPER	298 SQ.FT.
LOWER	785 SQ.FT.
TOTAL	1,862 SQ.FT.
DECK	268 SQ.FT.



0 ft 3 ft 5 ft

The floor plan and the measurements are approximate within +/- 2% and are to be used for advertising usage only.
Not suitable for architectural or construction, May include unfinished area. Not suitable for architectural or construction. E&O Insured

keyplan
plan your space

Booked on
the Pixilink App™

