

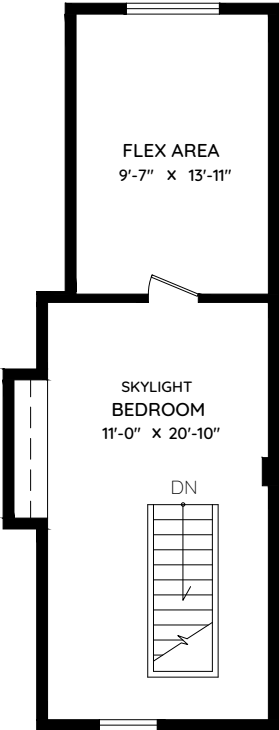
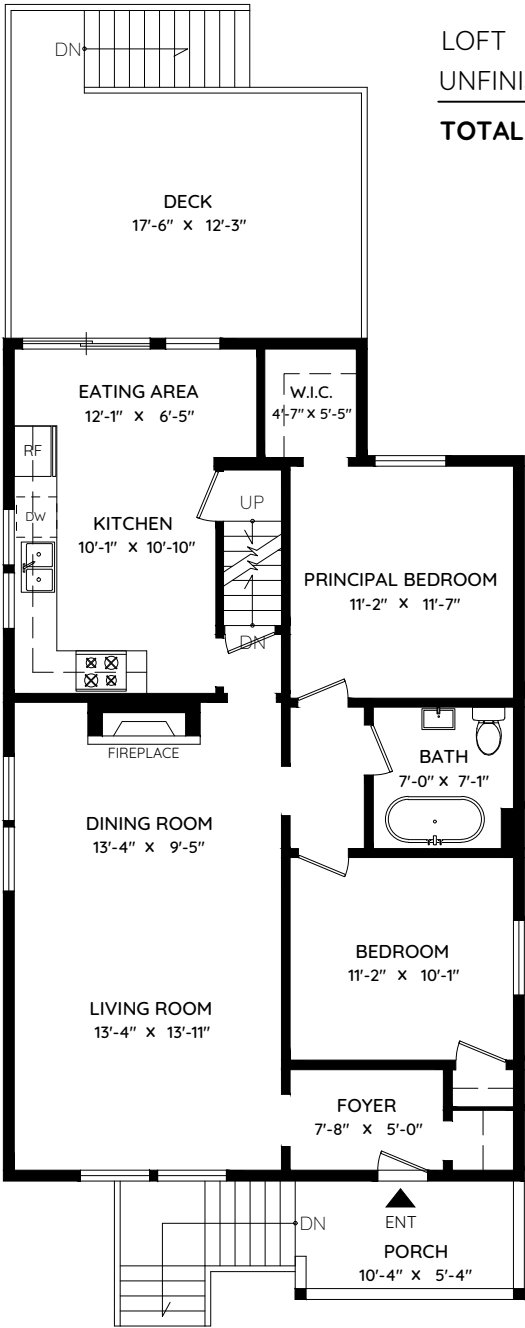
822 EAST 21ST AVENUE
VANCOUVER, BC

| | |
|-------------------|---------------------|
| MAIN | 1,046 SQ.FT. |
| LOWER | 946 SQ.FT. |
| TOTAL | 1,992 SQ.FT. |
| LOFT | 431 SQ.FT. |
| UNFINISHED | 100 SQ.FT. |
| TOTAL AREA | 2,523 SQ.FT. |

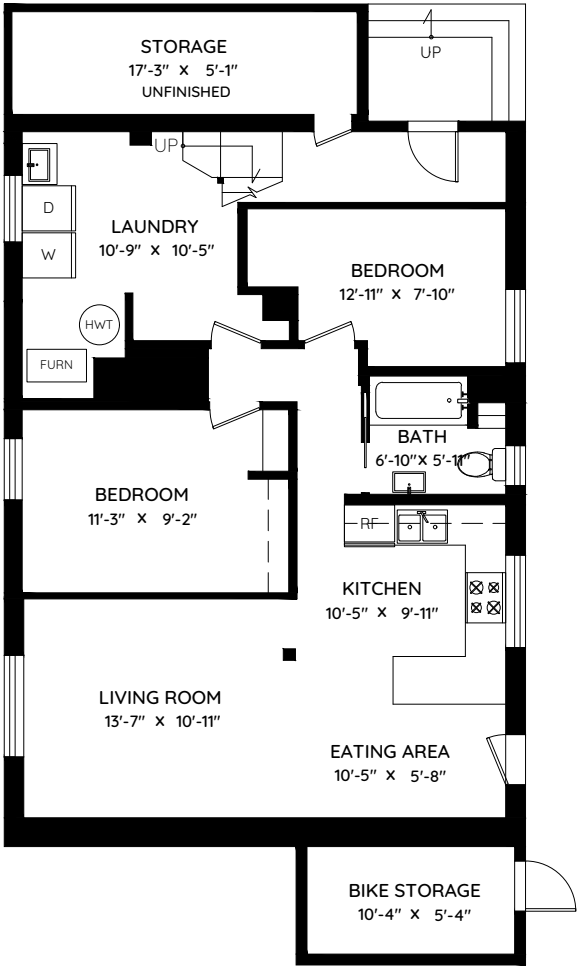
| | |
|--------------|-------------------|
| BIKE STORAGE | 67 SQ.FT. |
| DECK | 276 SQ.FT. |
| PORCH | 121 SQ.FT. |
| TOTAL | 464 SQ.FT. |



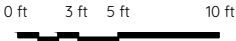
WWW.THEROCKELGROUP.COM



LOFT (LOW CEILING)
431 SQ.FT.
VAULTED CH: 6'-8"



LOWER FLOOR
946 SQ.FT.
CH: 6'-10"



The floor plan and the measurements are approximate within +/- 2% and are to be used for advertising usage only.
May include unfinished area. Not suitable for architectural or construction. E&O Insured