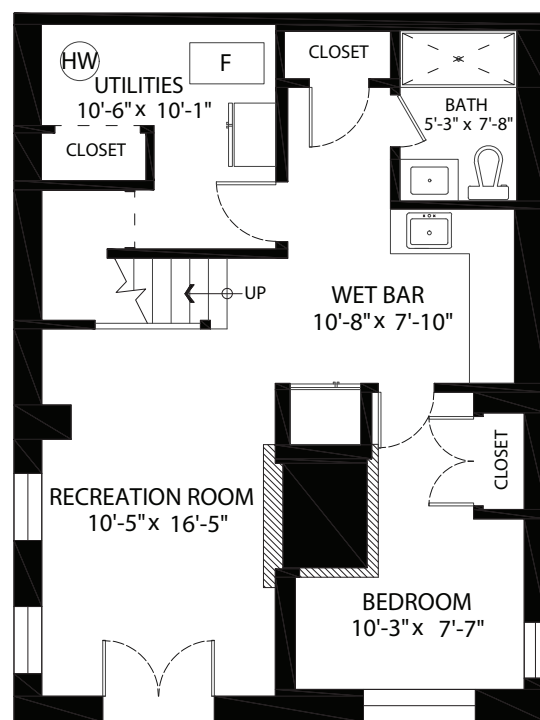


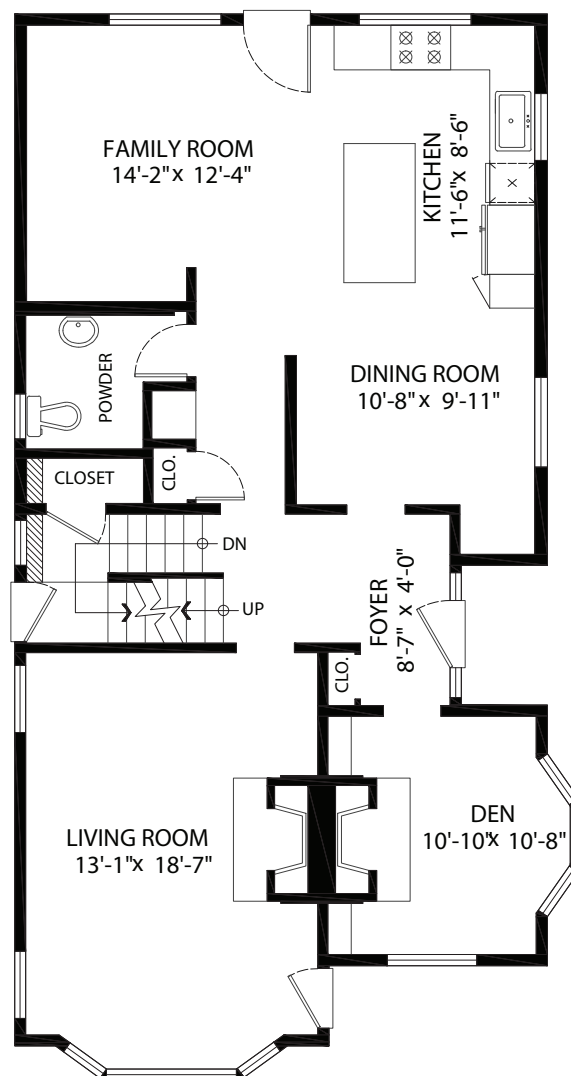
756 W 22nd Avenue, Vancouver, B.C.

Main Floor: 1,061 sq.ft.
Upper Floor: 957 sq.ft.
Lower Floor: 755 sq.ft.
Total: 2,773 sq.ft.

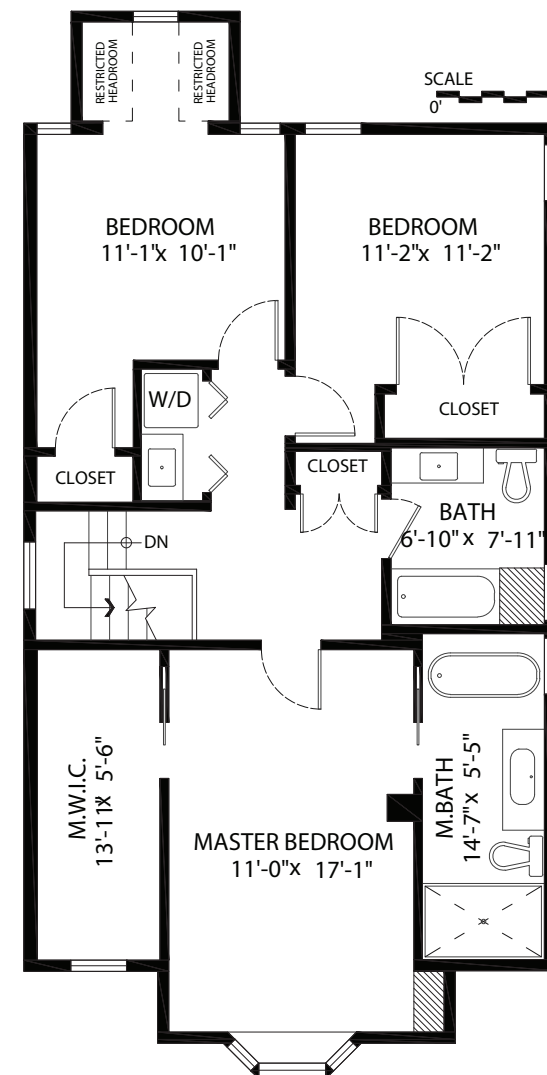
Restricted H.R.: 27 sq.ft.



Lower Floor Plan
Floor Area: 755 sq.ft



Main Floor Plan
Floor Area: 1,061 sq.ft



Upper Floor Plan
Floor Area: 957 sq.ft

Measured on: Jan. 19, 2018

The floor plan is not suitable for architectural/construction and is covered under E.O. © Excelsior Measuring Inc. 2018. All rights reserved. Excelsior Measuring Inc. Users shall not publish and distribute such material (in whole or in part) and/or incorporate it in other works in an



NORTH



Pixilink
SOLUTIONS
604-639-5434
WWW.PIXILINK.COM