



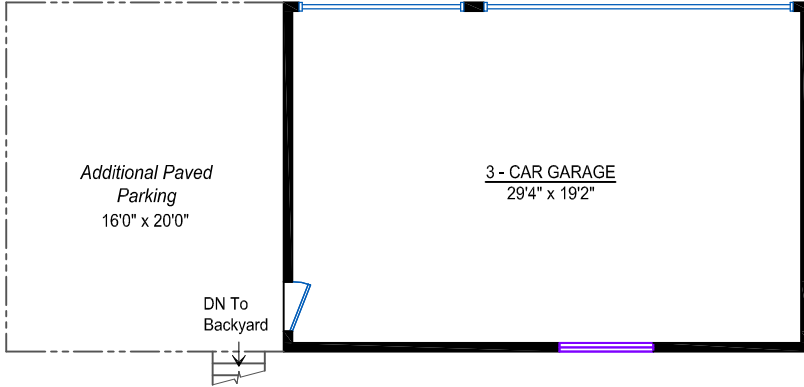
548 4th Street East
N. Vancouver, BC

Other Areas: (not included in Total)

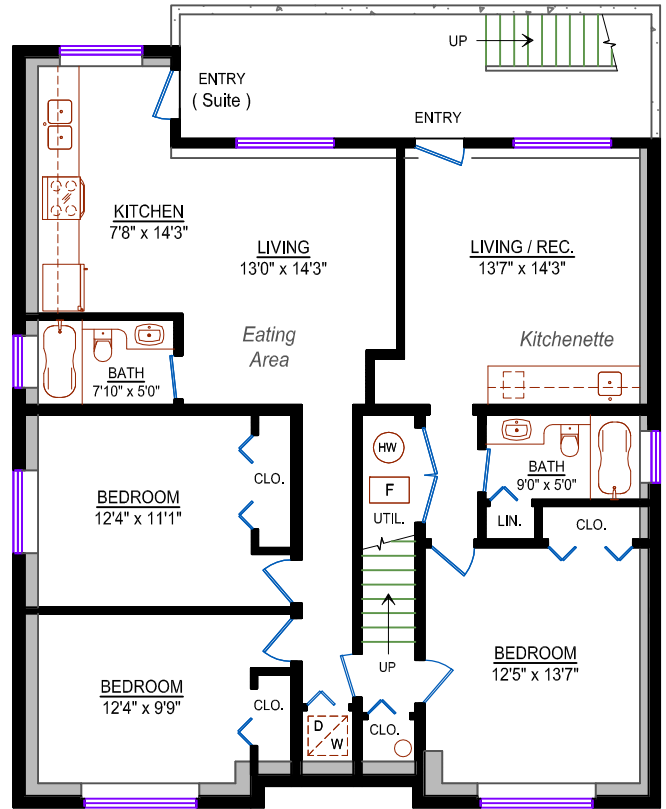
Main Level: 1487 sq. ft.
 Upper Level: 1337 sq. ft.
 * Lower Level: 1478 sq. ft.
 * Total: 4302 sq. ft.

Garage: 611 sq. ft.
 Balcony: 33 sq. ft.
 Deck: 98 sq. ft.

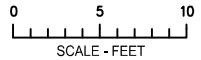
* includes low-level area under stairwell



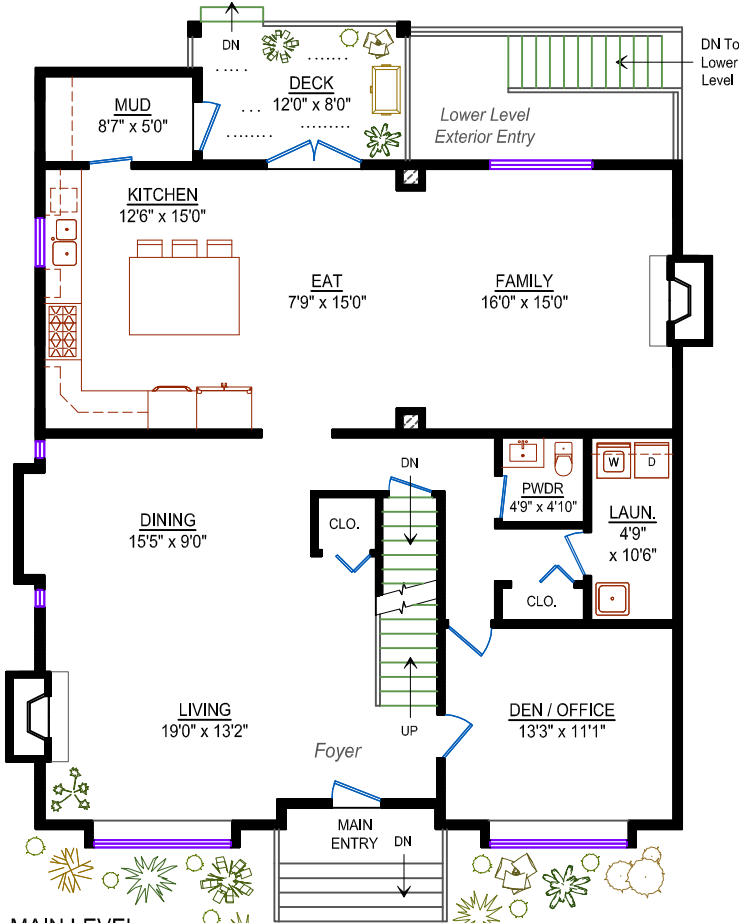
3-Car Garage (Detached)
 Area: 611 sq. ft. (location not to scale)



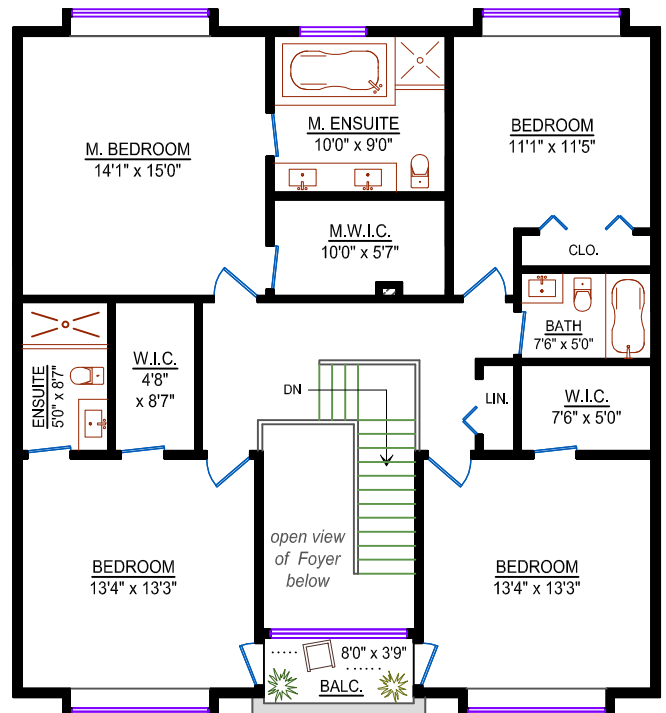
LOWER LEVEL
 Area: 1478 sq. ft.



Backyard



MAIN LEVEL
 Area: 1487 sq. ft.



UPPER LEVEL
 Area: 1337 sq. ft.

Design Ideas 4u
 Floorplans - Design
 604-862-5914

* room dimensions are approximate *