

LOWER LEVEL

Area: 1312 sq. ft. (Fin.)
 Area: 84 sq. ft. (Unfin.)
 Area: 169 sq. ft. (Unfin. / Low-Level)

583 Elstree Place
North Vancouver, BC

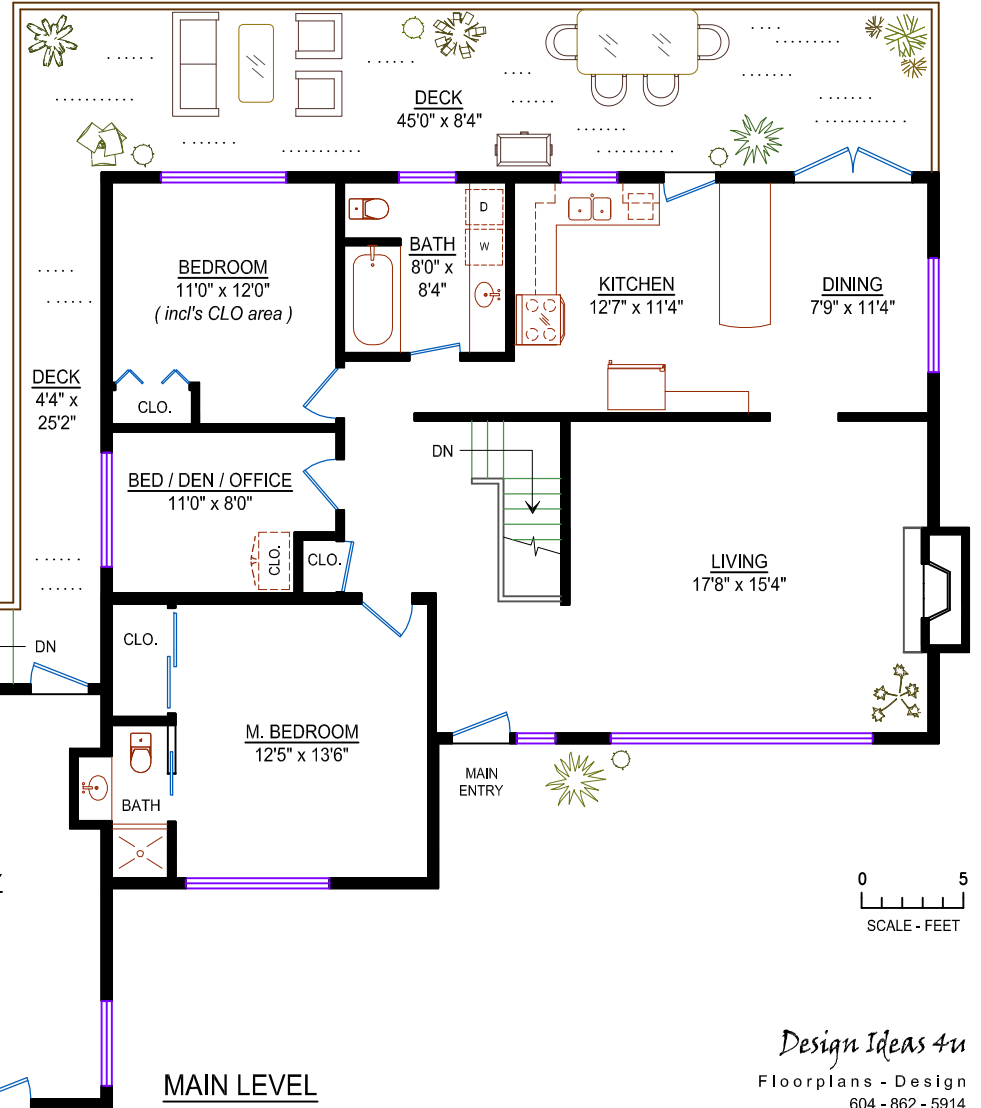
Other Areas: (not included in total)

Main Level: 1277 sq. ft.
 * Lower Level: 1312 sq. ft.
 Lower Level: 84 sq. ft.
 (Unfinished)

Deck: 488 sq. ft.
 Workshop: 386 sq. ft.

* Total: 2673 sq. ft.
 * (Incl's some finished low-level areas)

Lower Level: 169 sq. ft.
 (Unfinished / Low-Level)
 Grand Total: 2842 sq. ft.



MAIN LEVEL

Area: 1277 sq. ft.



Design Ideas 4u

Floorplans - Design
 604 - 862 - 5914

* room dimensions are approximate *