

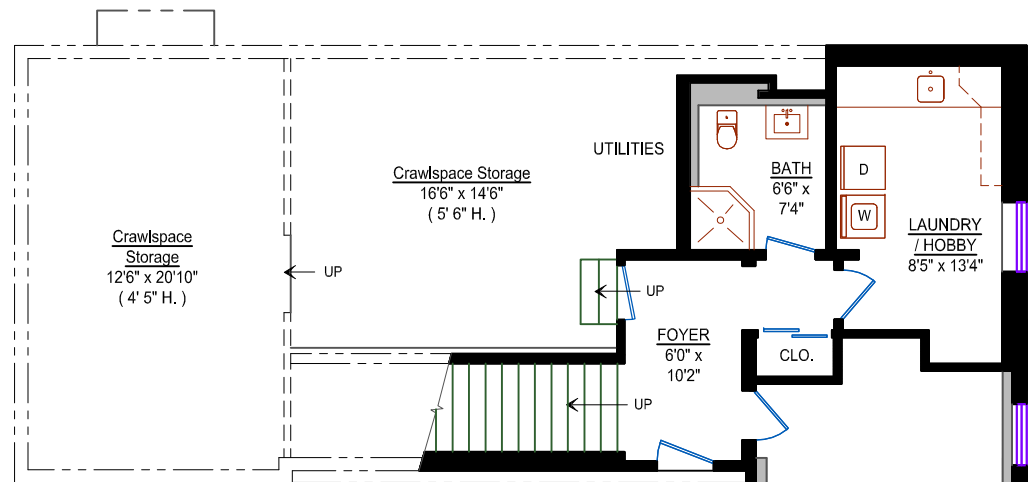


873 Baycrest Drive
North Vancouver, BC

Main Level: 1351 sq. ft.
Lower Level: 651 sq. ft.
Total: 2002 sq. ft.

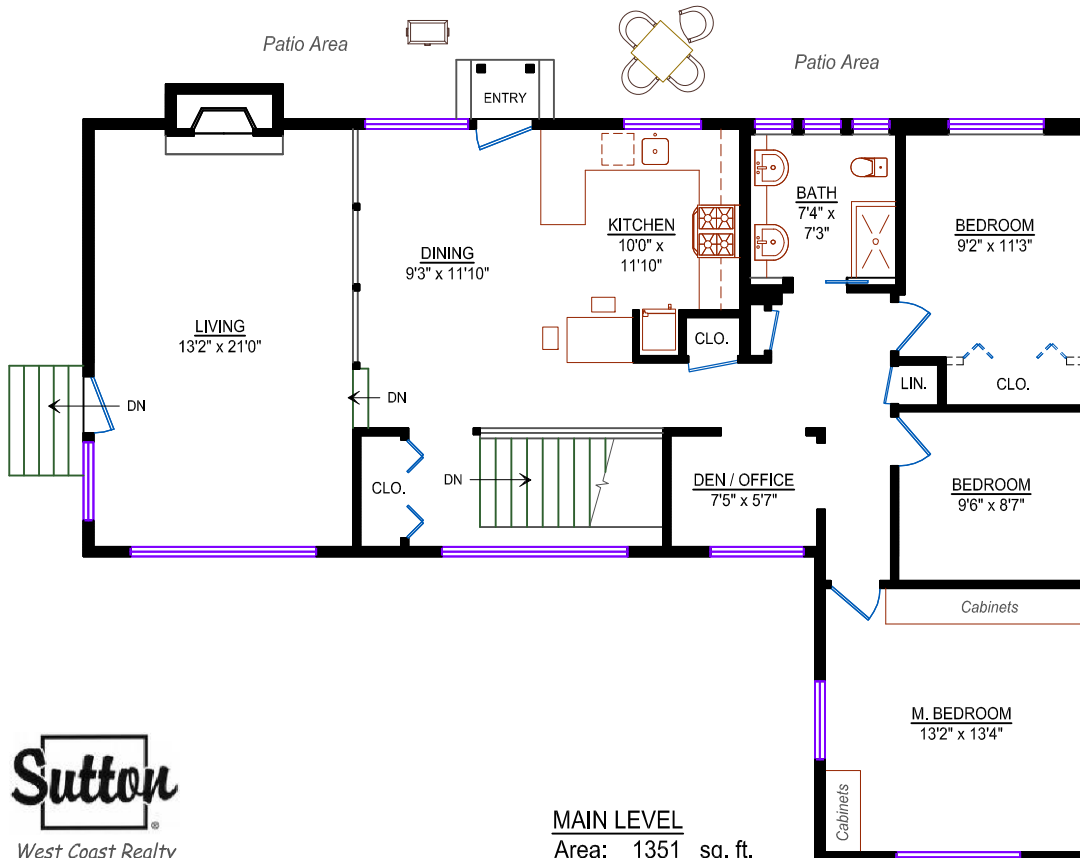
Other Areas: (not included in total)

Garage: 394 sq. ft.
Patio: (above garage) 384 sq. ft.
Crawl. / Stor. 550 sq. ft.

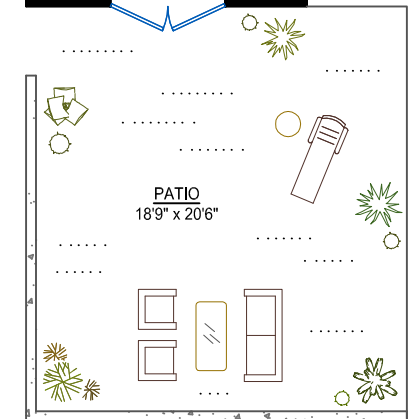


LOWER LEVEL
Area: 651 sq. ft.

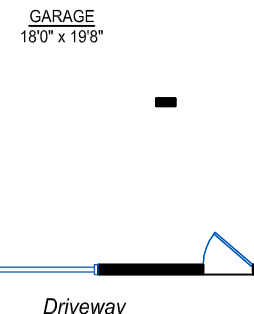
0 5
SCALE - FEET



MAIN LEVEL
Area: 1351 sq. ft.



Garage Located Under Patio



Driveway



Design Ideas 4u

Floorplans - Design
Info@designideas4u.ca

* room dimensions are approximate *