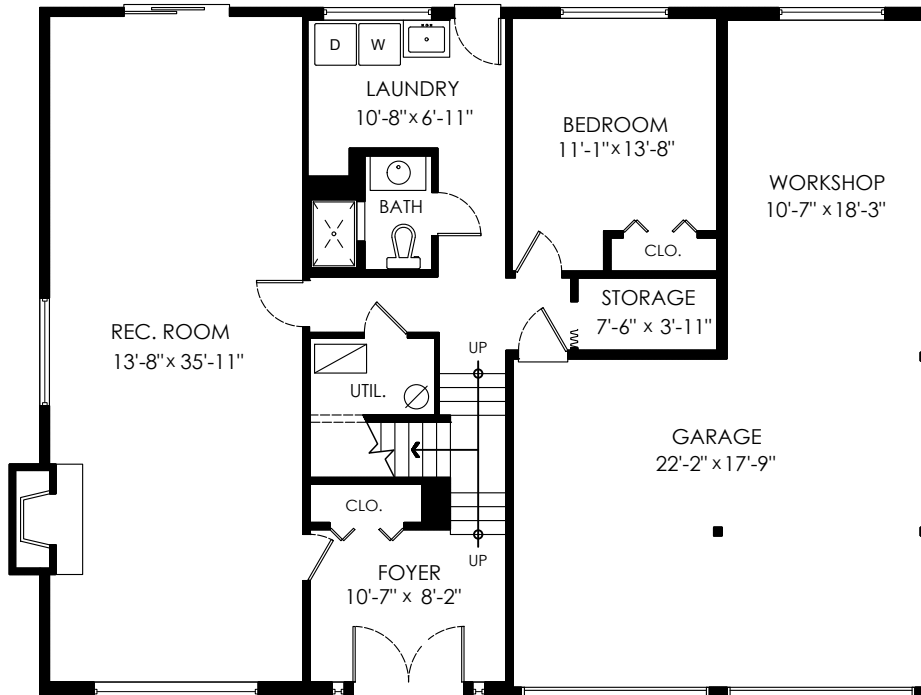
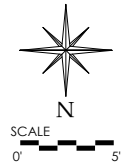


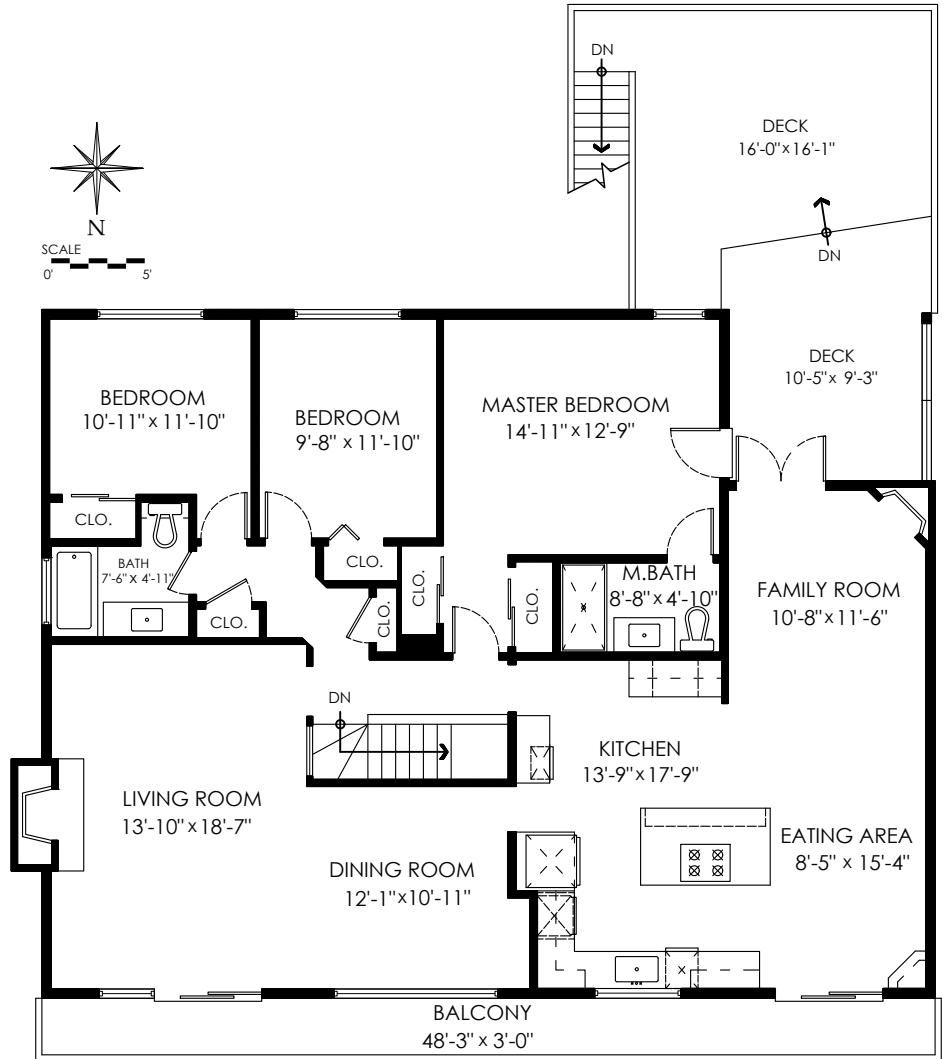
2725 Wyat Place
North Vancouver, B.C.

Main Floor: 1,692 sq.ft.
Lower Floor: 1,170 sq.ft.
Total: 2,862 sq.ft.

Garage / Workshop: 625 sq.ft.
Deck: 370 sq.ft.
Balcony: 148 sq.ft.
Ext. Storage: 194 sq.ft.



Lower Floor Plan
Floor Area: 1170 sq.ft.
Ceiling Height: 8'



Main Floor Plan
Floor Area: 1692 sq.ft.
Ceiling Height: 8'