

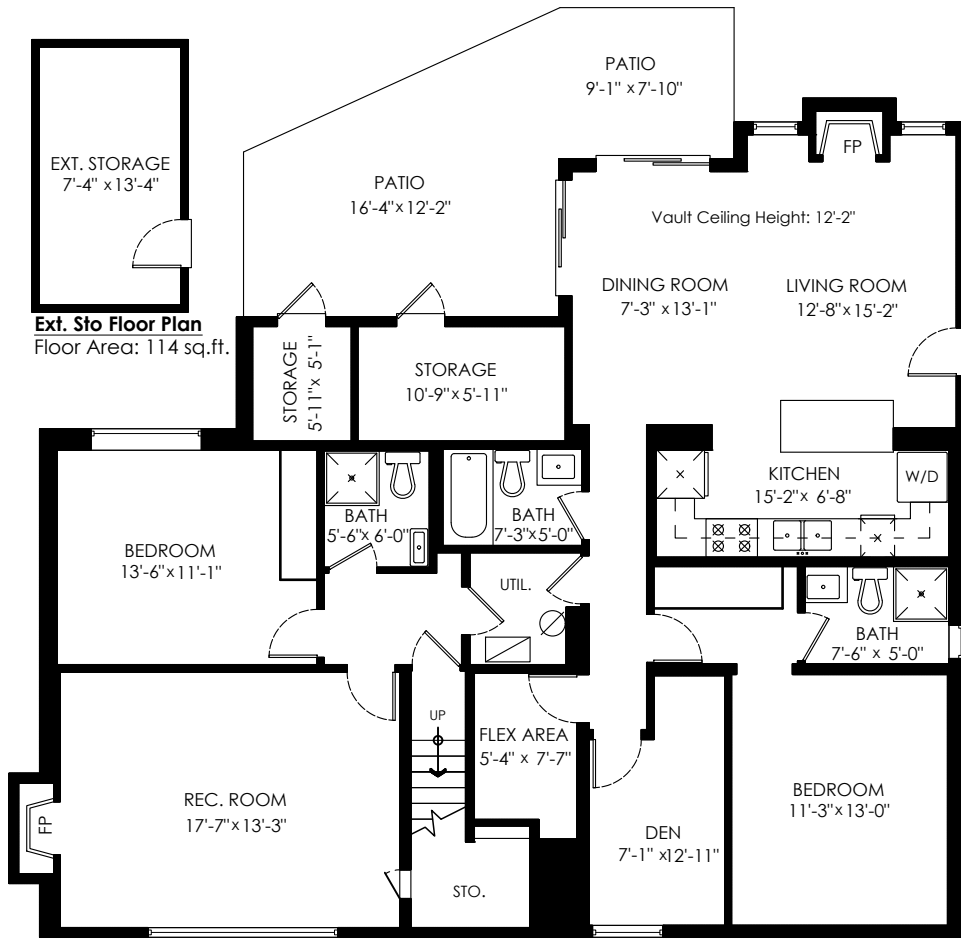
2689 Hardy Crescent North Vancouver

Main Floor: 1,464 sq.ft.
Lower Floor: 1,573 sq.ft.
Sub Total: 3,037 sq.ft.

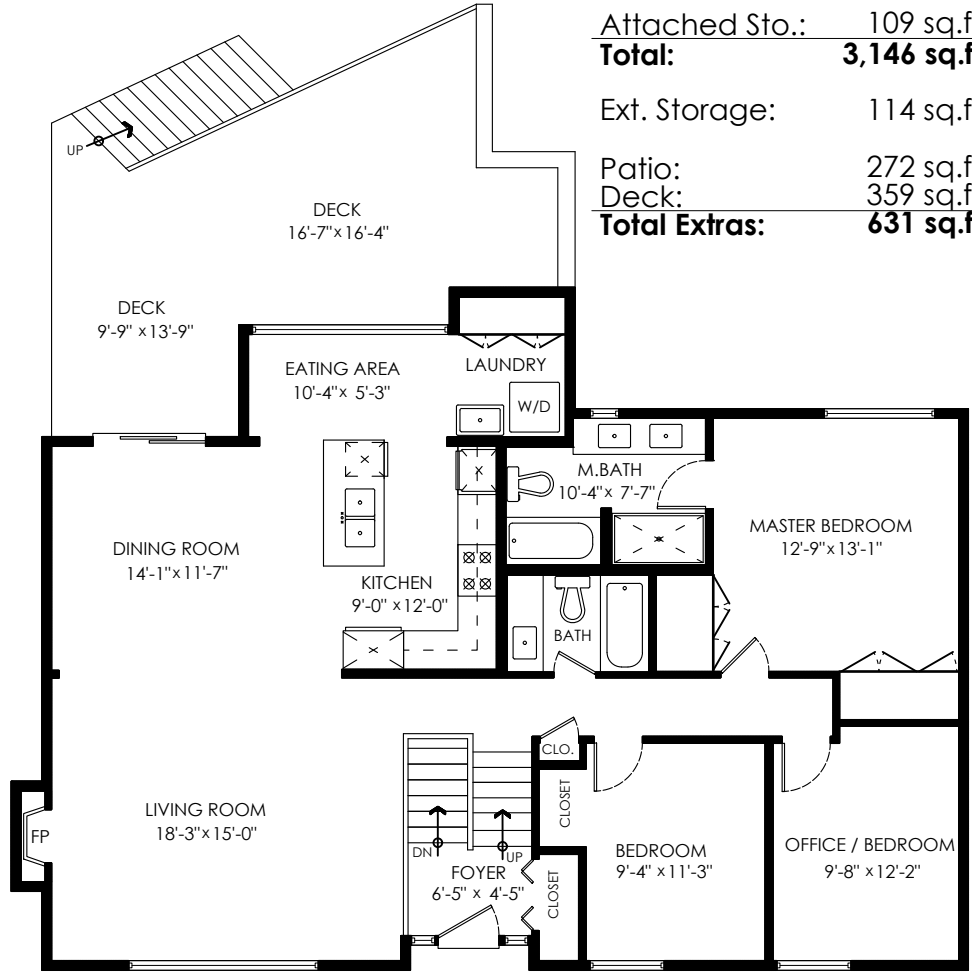
Attached Sto.: 109 sq.ft.
Total: 3,146 sq.ft.

Ext. Storage: 114 sq.ft.

Patio: 272 sq.ft.
Deck: 359 sq.ft.
Total Extras: 631 sq.ft.



Lower Floor Plan
Floor Area: 1573 sq.ft.
Storage Area: 109 sq.ft.
Ceiling Height: 7'-10"



Main Floor Plan
Floor Area: 1464 sq.ft.
Ceiling Height: 7'-10"



WestCoast Realty™
You've found a home

