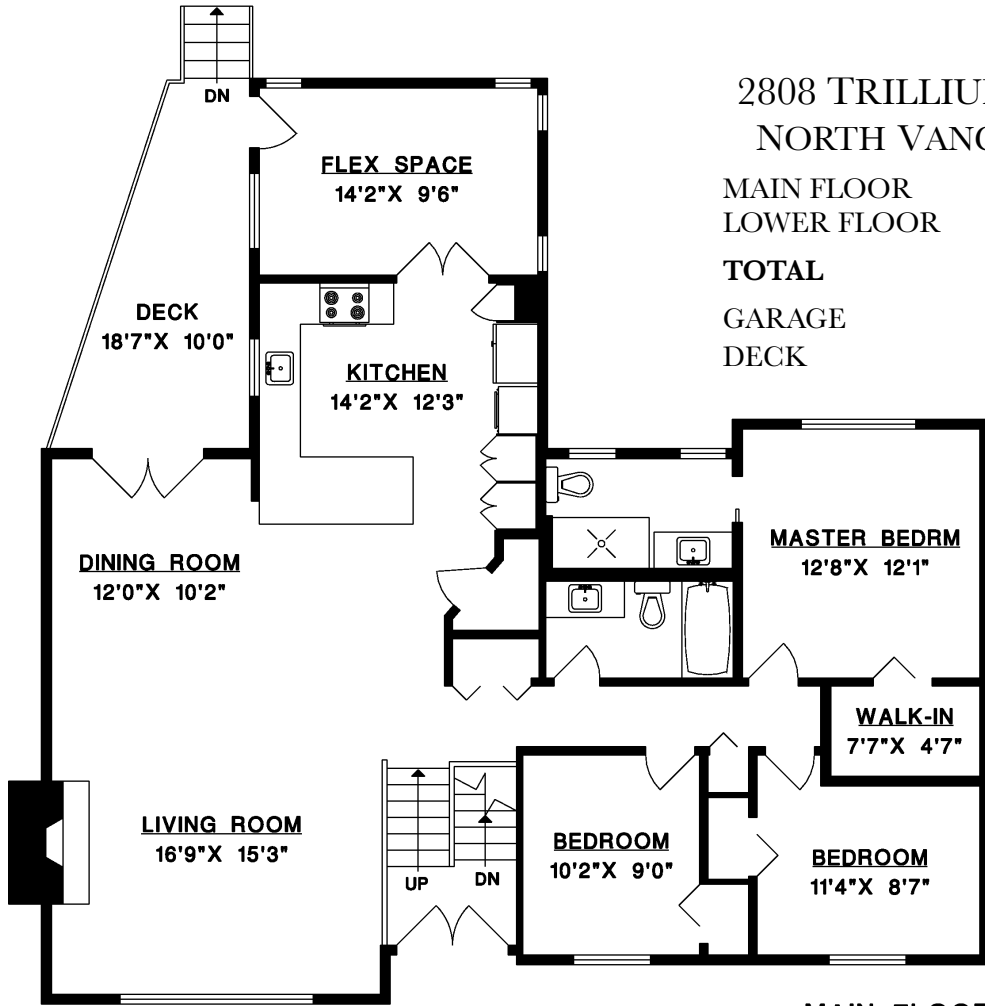


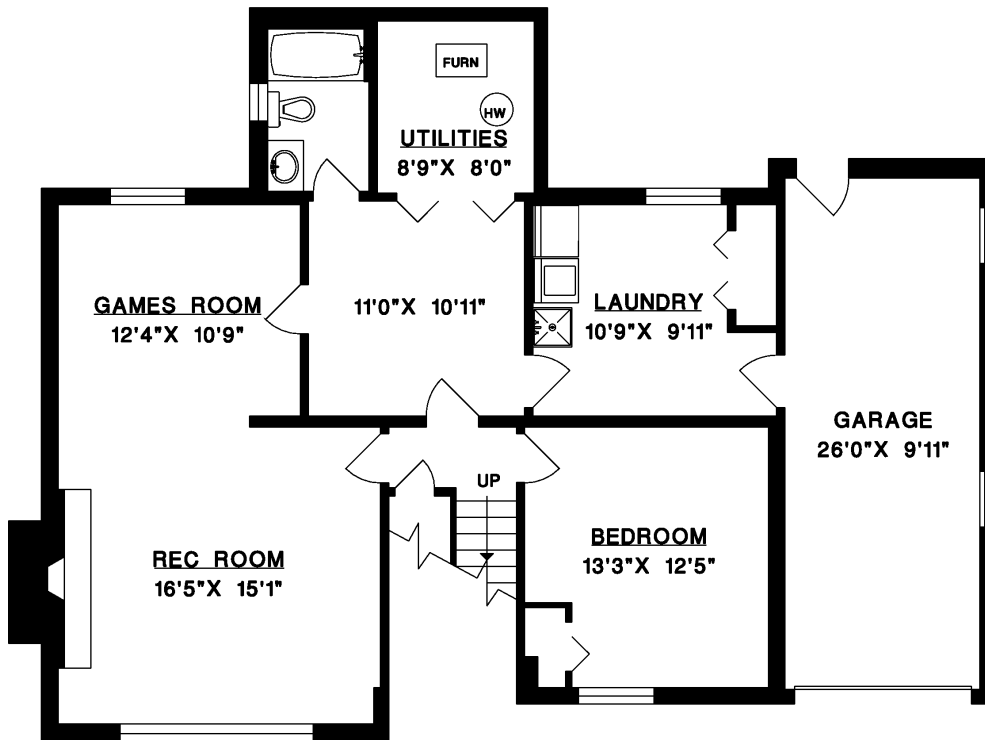


2808 TRILLIUM PLACE  
NORTH VANCOUVER

MAIN FLOOR	1,605 SQ.FT.
LOWER FLOOR	1,122 SQ.FT.
<b>TOTAL</b>	<b>2,727 SQ.FT.</b>
GARAGE	291 SQ.FT.
DECK	137 SQ.FT.



MAIN FLOOR



LOWER FLOOR

