



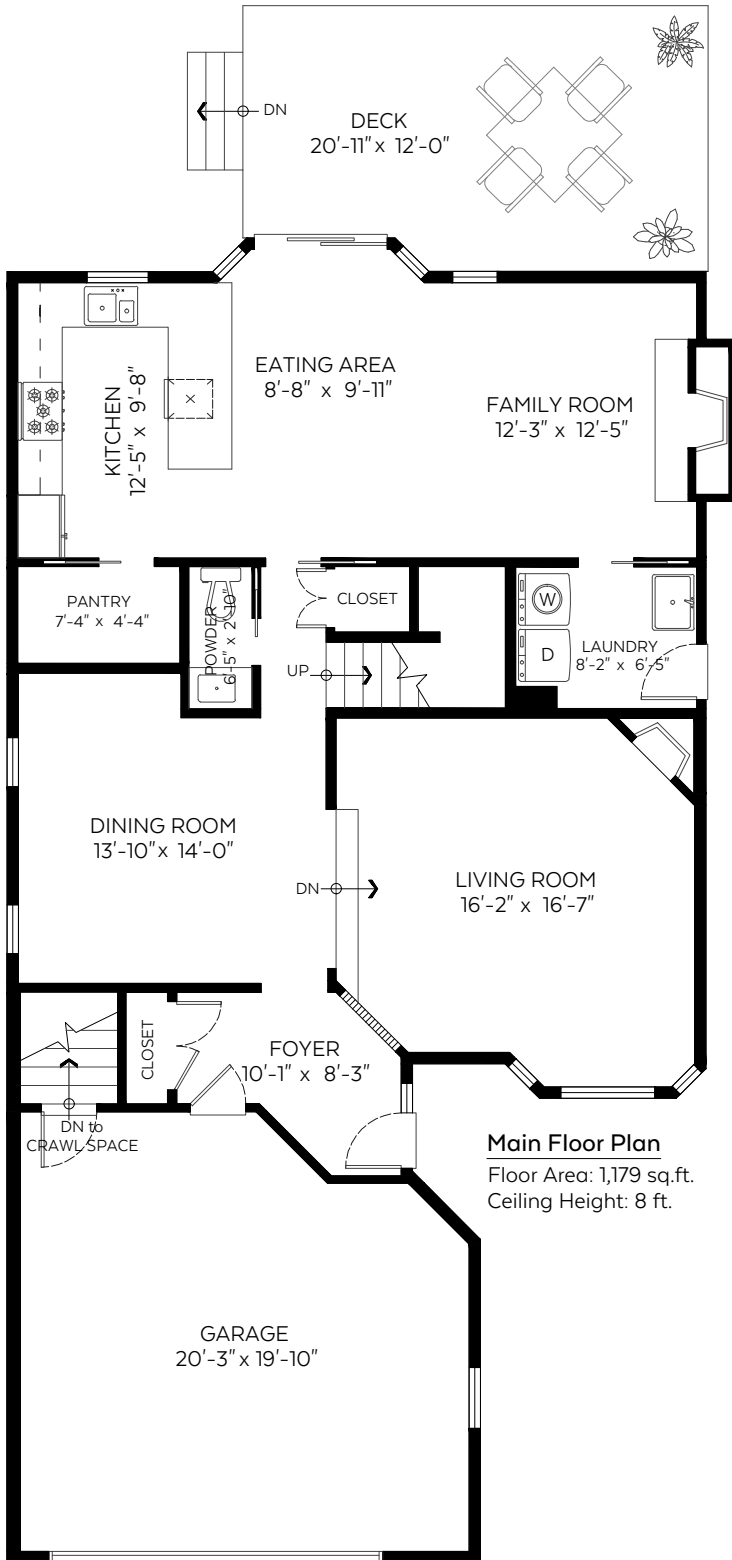
1521 Lighthall Court,  
North Vancouver, B.C.

Main Floor: 1,179 sq.ft.  
Upper Floor: 887 sq.ft.

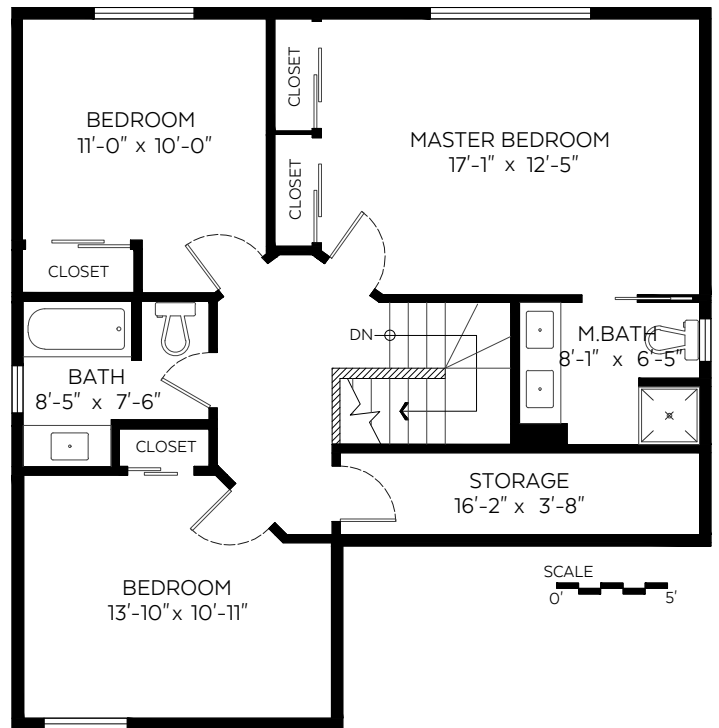
**Total: 2,066 sq.ft.**

**Auxiliary Area**

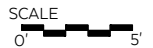
Garage: 430 sq.ft.  
Deck: 239 sq.ft.



**Main Floor Plan**  
Floor Area: 1,179 sq.ft.  
Ceiling Height: 8 ft.



**Upper Floor Plan**  
Floor Area: 887 sq.ft.  
Ceiling Height: 8 ft.



Measured on: September 23, 2020

The floor plan is not suitable for architectural/construction and is covered under E&O. © Excelsior Measuring Inc. 2019. All rights reserved for Excelsior Measuring Inc. Users shall not publish and distribute such material (in whole or in part) and/or incorporate it in other works in any form.

