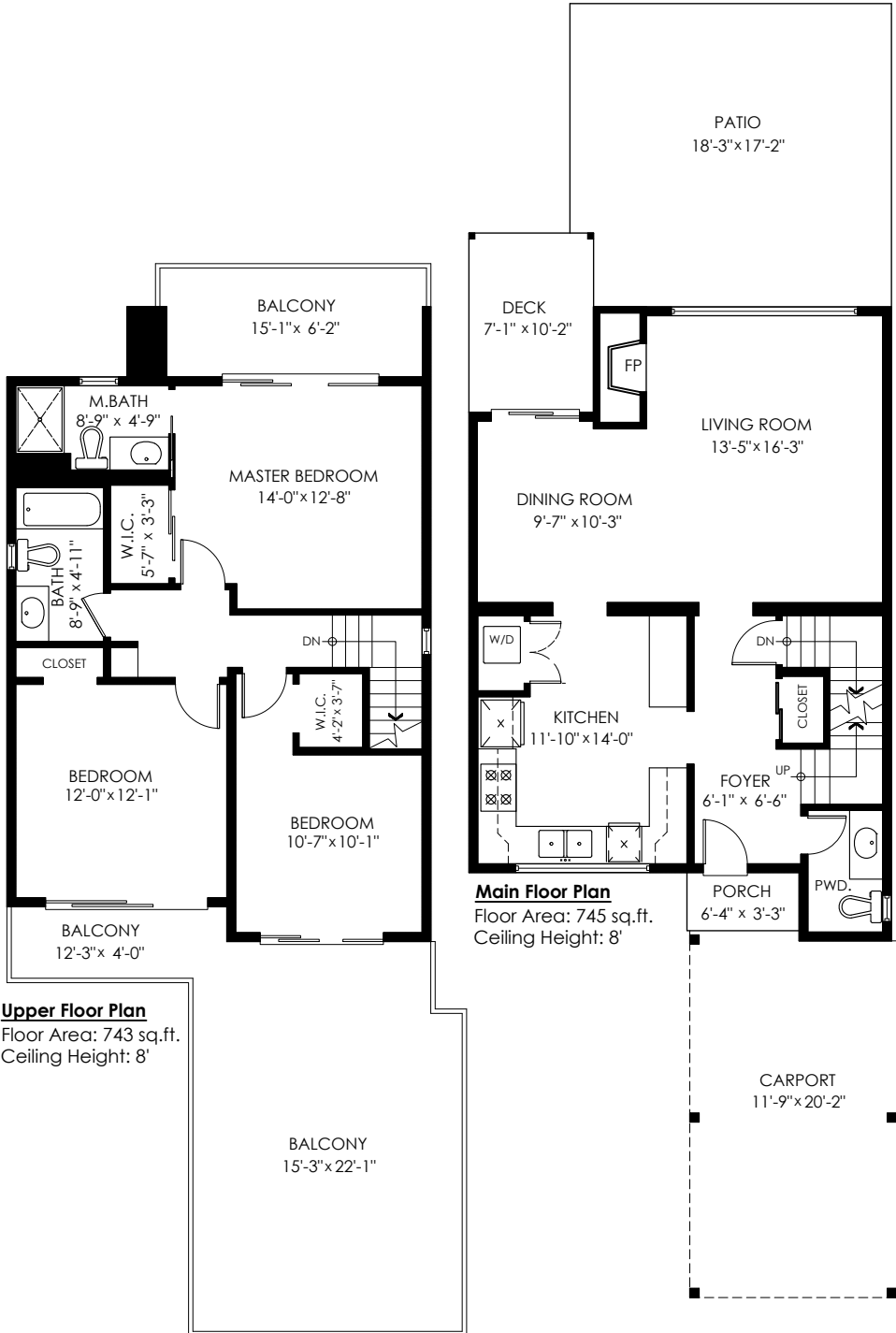




Main Floor: 745 sq.ft.  
 Upper Floor: 743 sq.ft.  
**Sub Total: 1,488 sq.ft.**

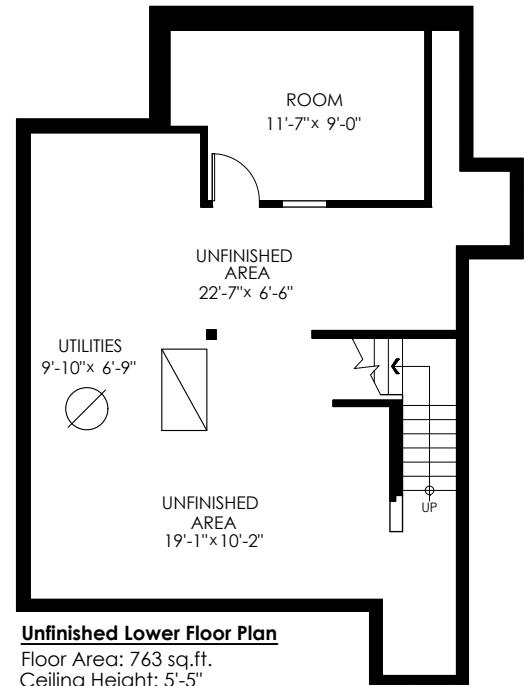
Unfinished Lower Floor: 763 sq.ft.  
**Total: 2,251 sq.ft.**

Carport: 237 sq.ft.  
 Patio: 307 sq.ft.  
 Deck: 72 sq.ft.  
 Front Balcony: 375 sq.ft.  
 Rear Balcony: 91 sq.ft.  
 Porch: 21 sq.ft.  
**Total Extras: 1,103 sq.ft.**



**Main Floor Plan**  
 Floor Area: 745 sq.ft.  
 Ceiling Height: 8'

**Upper Floor Plan**  
 Floor Area: 743 sq.ft.  
 Ceiling Height: 8'



**Unfinished Lower Floor Plan**  
 Floor Area: 763 sq.ft.  
 Ceiling Height: 5'-5"

