

Colleen Almrud

778.688.5972

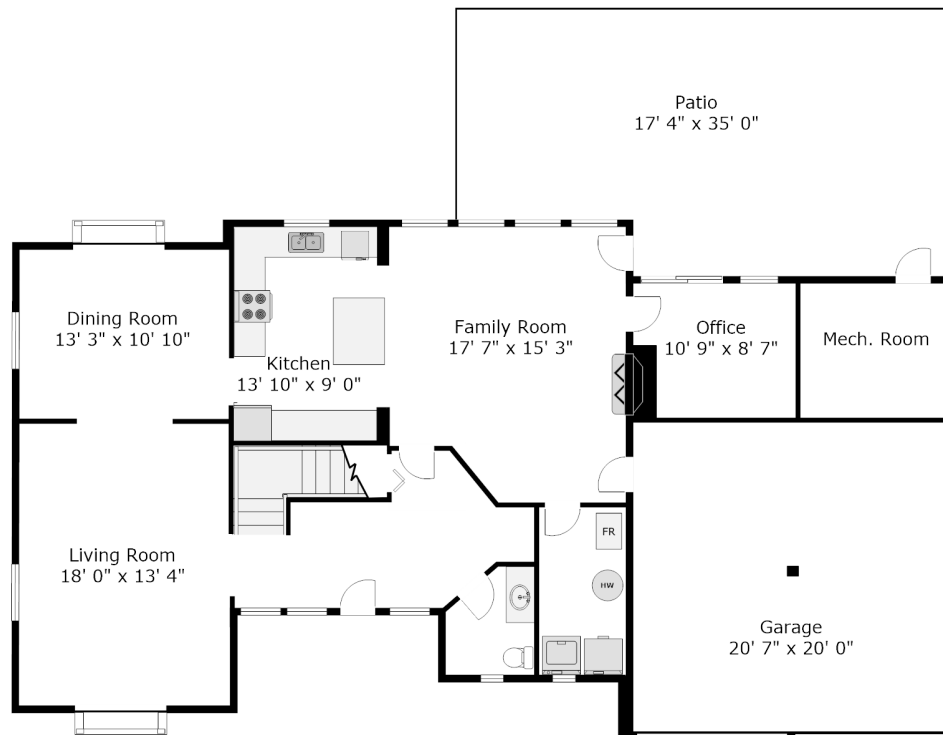


Natalie Walker

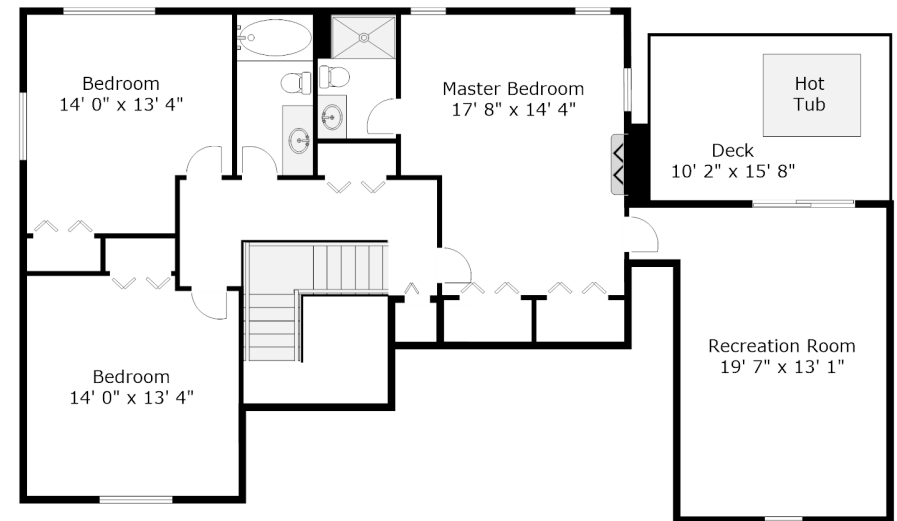
604.868.0028
Personal Real Estate Corporation

5255 4 Ave.
Tsawwassen, BC

Finished	2513 sq. ft.
Mech. Room	94 sq. ft.
GRAND TOTAL	2607 sq. ft.
Garage	430 sq. ft.



Main Level
1257 sq. ft.
(+94 sq. ft. Mech. Room)



Upper Level
1256 sq. ft.

Measurements and floor plan are approximate and are to be used for advertising purposes only.
Not suitable for construction or architectural use.
Measured June 2017.