



CORRINE DONOHOE

VANCOUVER REAL ESTATE

corrine@corrinedonohoe.com

www.corrinedonohoe.com

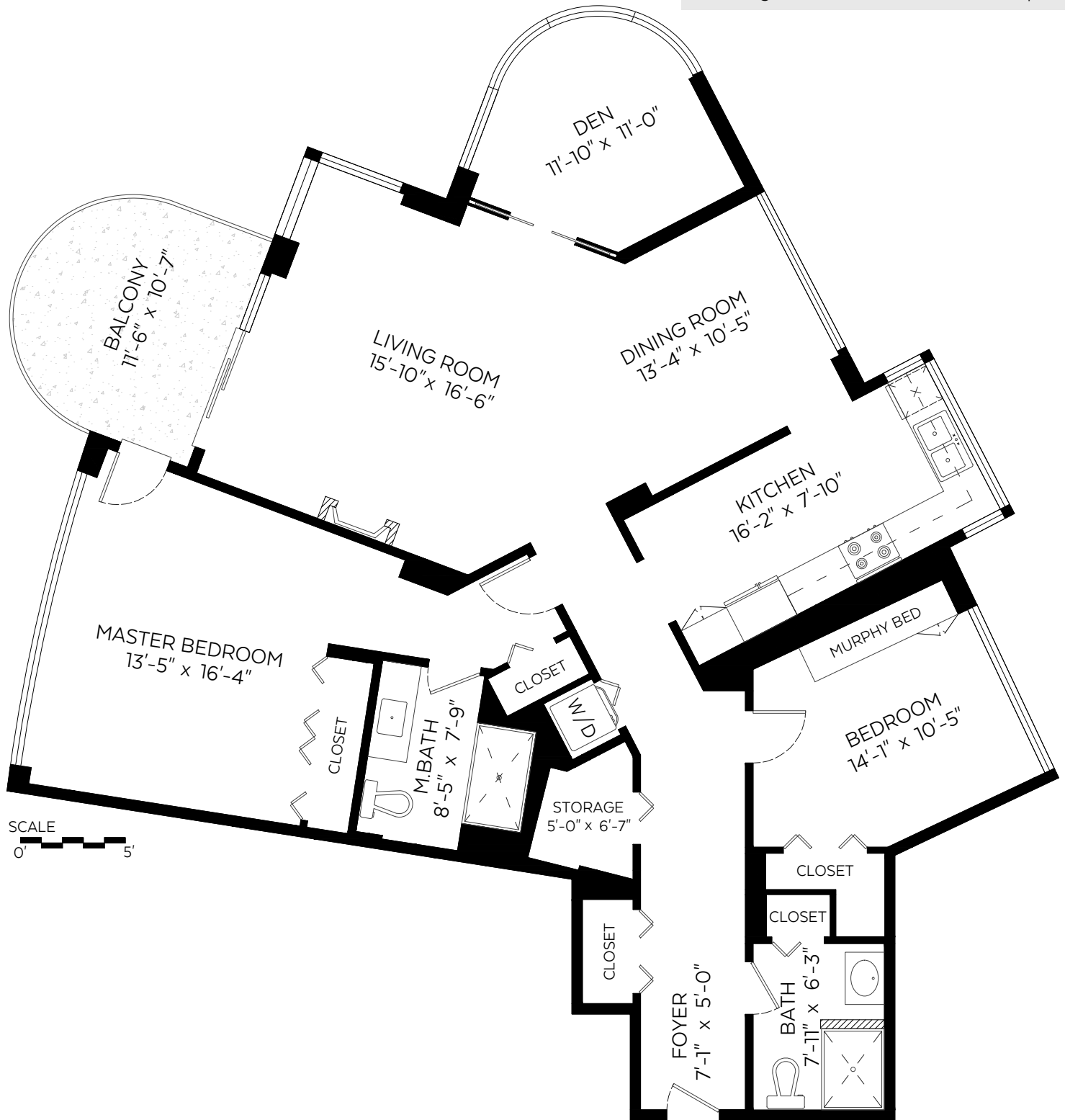
604.761.8531

#802-995 Roche Point Drive,
North Vancouver, B.C.

Main Floor: 1,504 sq.ft.

Auxiliary Area

Balcony: 108 sq.ft.



Measured on: Aug. 30, 2018



NORTH



Pixelink
SOLUTIONS
604-639-5434
WWW.PIXILINK.COM



The floor plan is not suitable for architectural/construction and is covered under E&O. © Excelsior Measuring Inc. 2018. All rights reserved for Excelsior Measuring Inc. Users shall not publish and distribute such material (in whole or in part) and/or incorporate it in other works in any form.