

1103 - 121 W 16TH STREET

NORTH VANCOUVER, BC



Corrine Donohoe

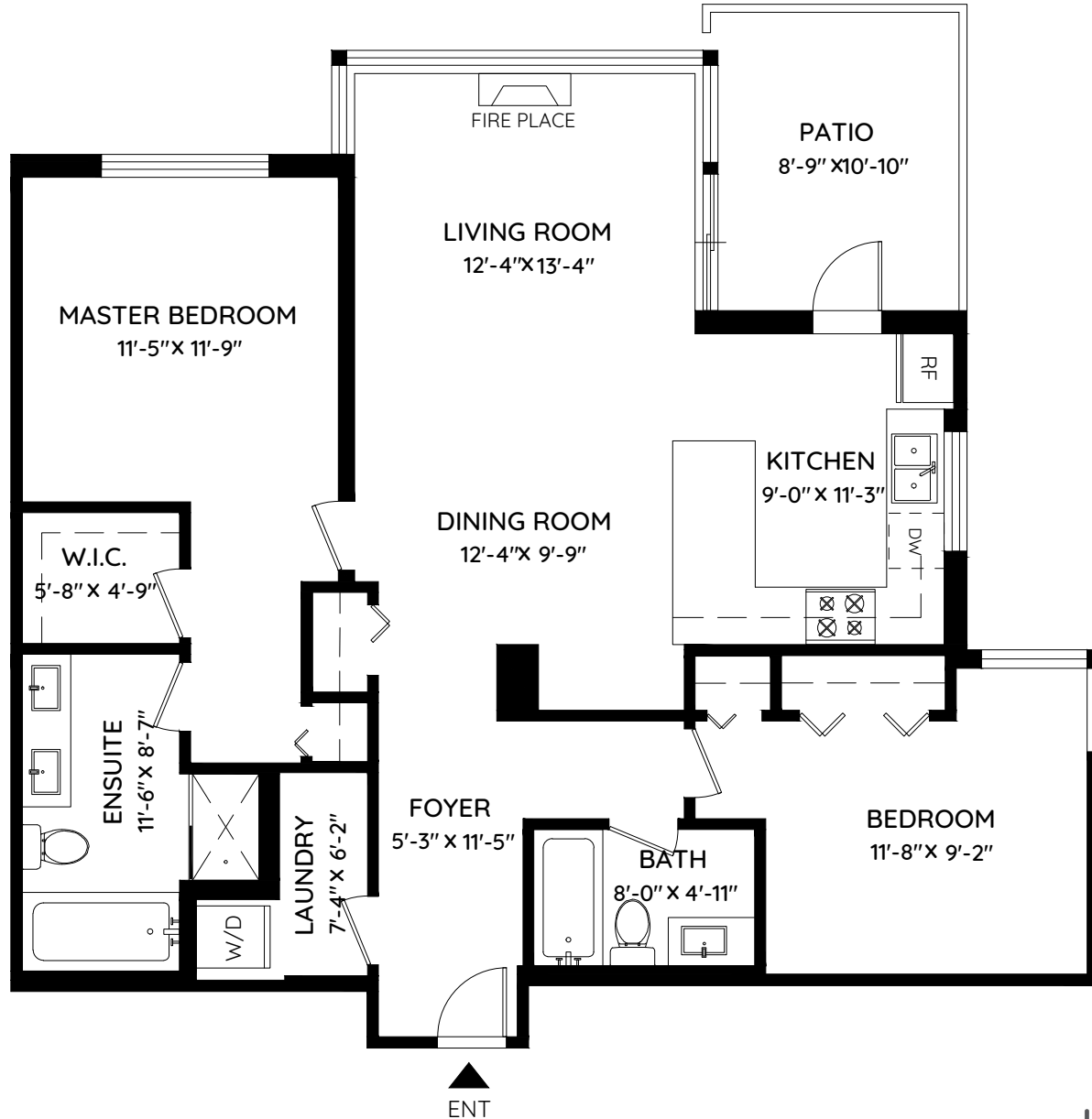
corrine@corrinedonohoe.com • 604 761 8531

Royal LePage Sussex / corrinedonohoe.com

LIVING AREA 1,142 SQ.FT.

PATIO 101 SQ.FT.

CEILING HEIGHT 8'-8"



0 ft 3 ft 5 ft



The floor plan and the measurements are approximate and are to be used for advertising usage only. Not suitable for architectural or construction. E&O Insured

keyplan
plan your space

Booked on
the Pixilink App™

