

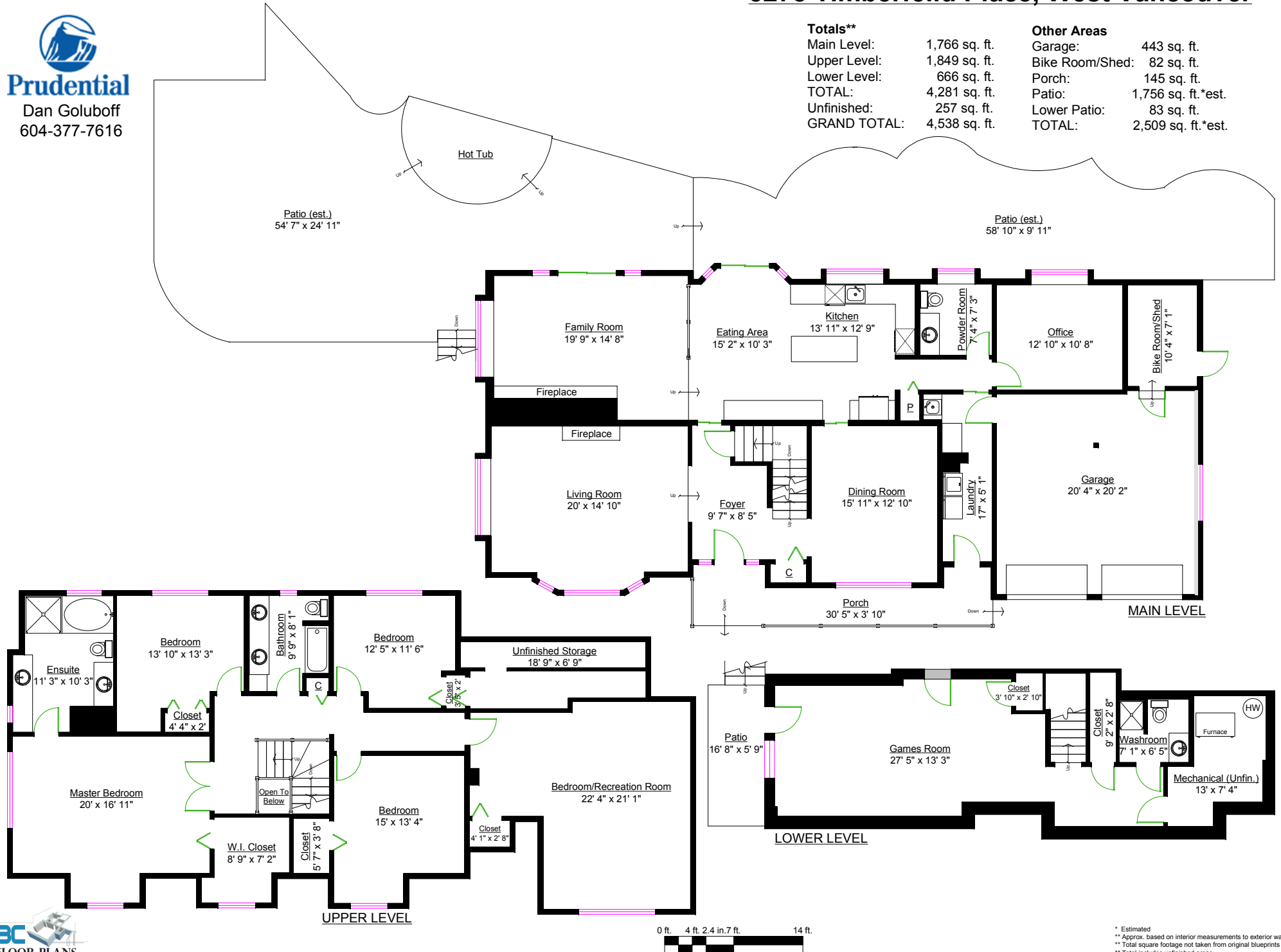
# 5278 Timberfeild Place, West Vancouver

## Totals\*\*

Main Level:	1,766 sq. ft.
Upper Level:	1,849 sq. ft.
Lower Level:	666 sq. ft.
TOTAL:	4,281 sq. ft.
Unfinished:	257 sq. ft.
GRAND TOTAL:	4,538 sq. ft.

## Other Areas

Garage:	443 sq. ft.
Bike Room/Shed:	82 sq. ft.
Porch:	145 sq. ft.
Patio:	1,756 sq. ft.*est.
Lower Patio:	83 sq. ft.
TOTAL:	2,509 sq. ft.*est.



\* Estimated  
\*\* Approx. based on interior measurements to exterior walls  
\*\*\* Total square footage not taken from original blueprints  
\*\*\*\* Total includes unfinished areas