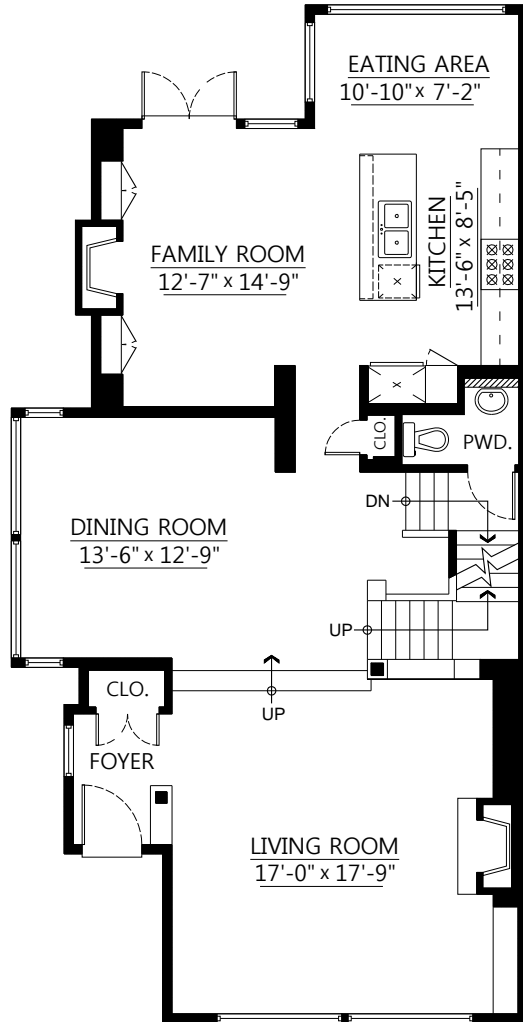


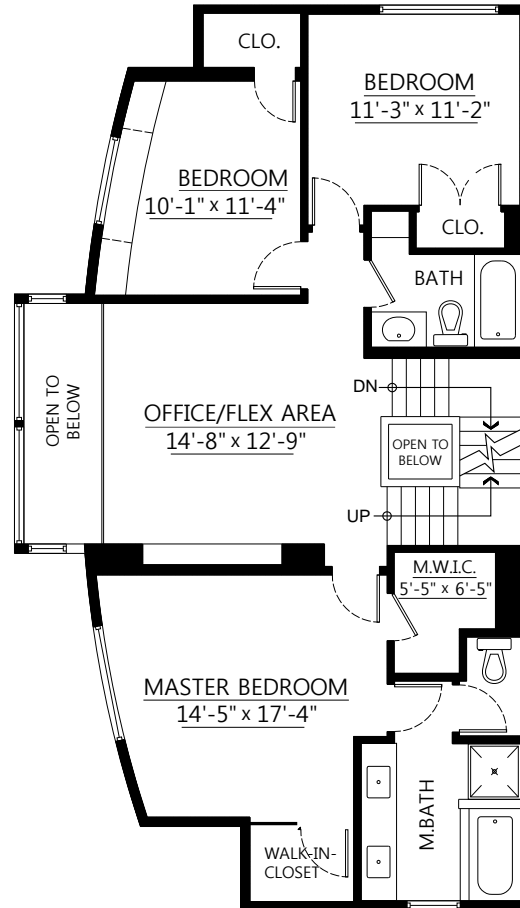
**6002 Chancellor Blvd.
Vancouver, B.C.**

Main Floor: 1,218 sq.ft.
 Upper Floor: 1,029 sq.ft.
 Top Floor: 370 sq.ft.
 Lower Floor: 1,213 sq.ft.
 Total: 3,830 sq.ft.

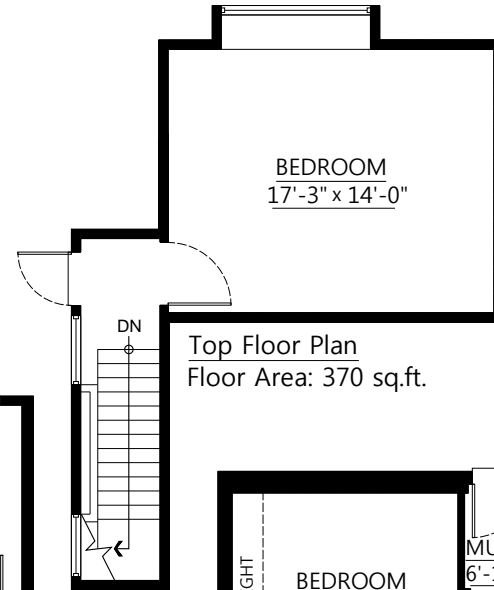
Open To Below: 73 sq.ft.



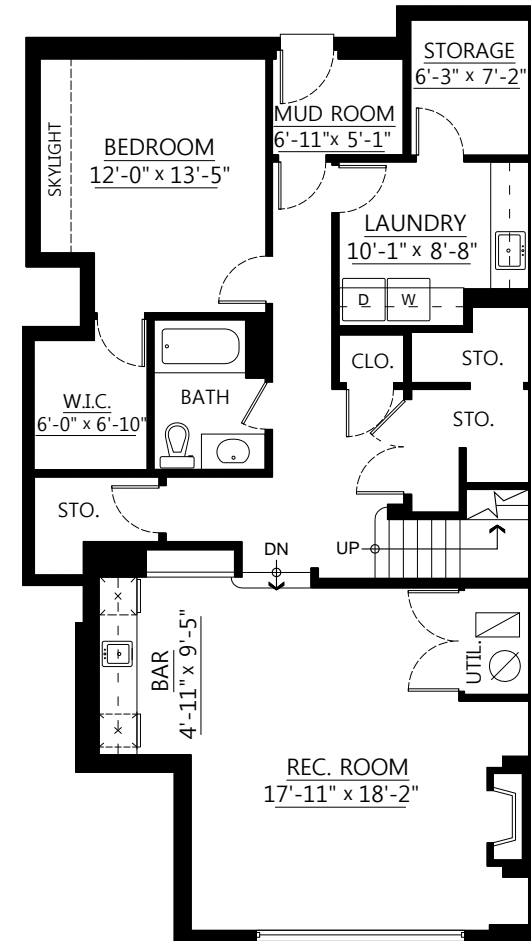
Main Floor Plan
Floor Area: 1,218 sq.ft.



Upper Floor Plan
Floor Area: 1,029 sq.ft.



Top Floor Plan
Floor Area: 370 sq.ft.



Lower Floor Plan

