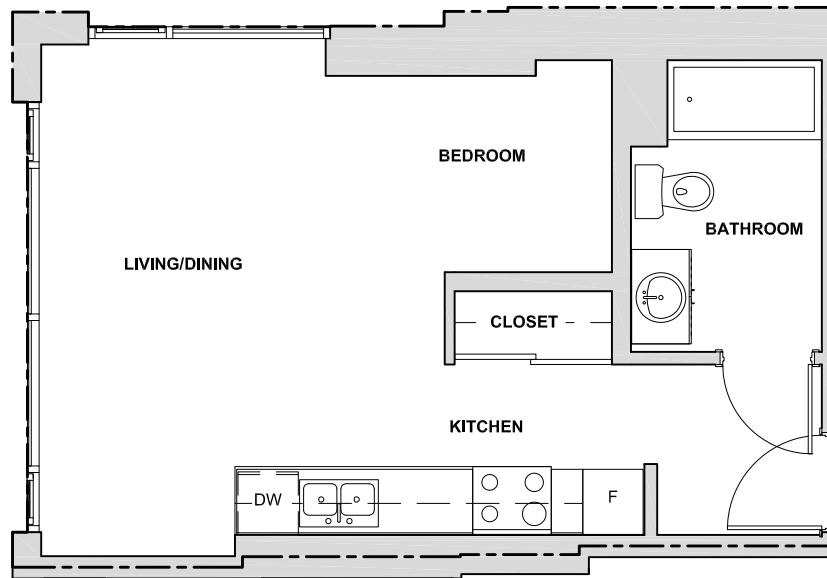


CAPILANO RESIDENCES

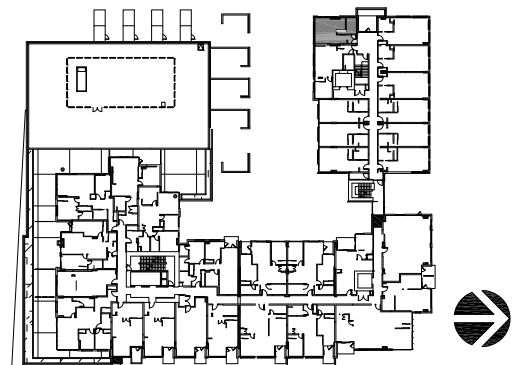
2083 FULLERTON AVENUE
NORTH VANCOUVER, BC

UNIT S5B

STUDIO
438 SQ FT



UNIT 402



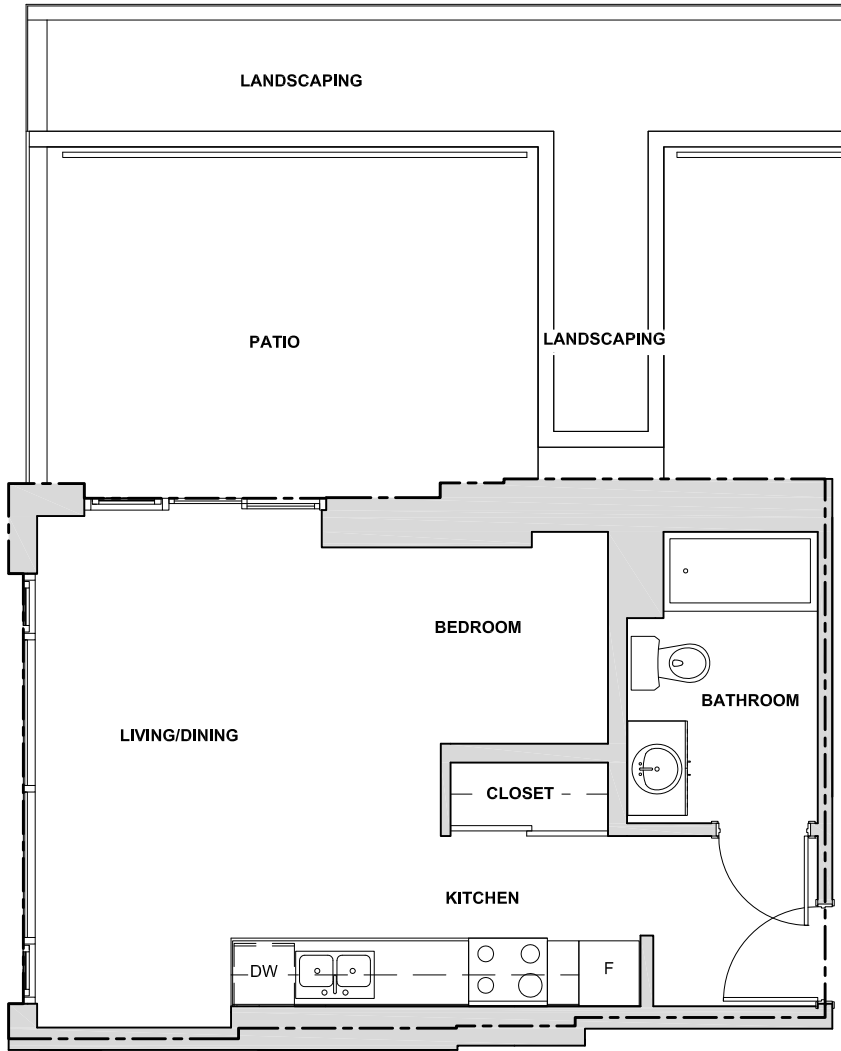
THE DEVELOPER RESERVES THE RIGHT TO MAKE CHANGES AND MODIFICATIONS TO THE INFORMATION CONTAINED HEREIN. FLOOR PLANS, LAYOUTS, AND FINISHES ARE SUBJECT TO CHANGE WITHOUT NOTICE.

CAPILANO RESIDENCES

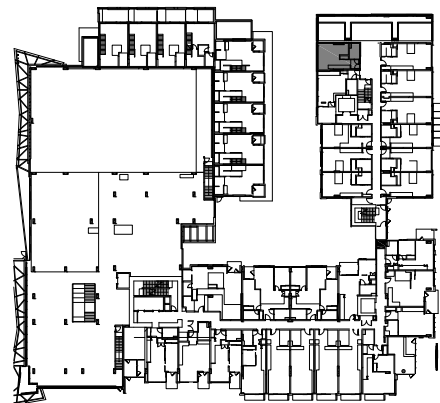
2083 FULLERTON AVENUE
NORTH VANCOUVER, BC

UNIT S5A

STUDIO
438 SQ FT



UNIT 302



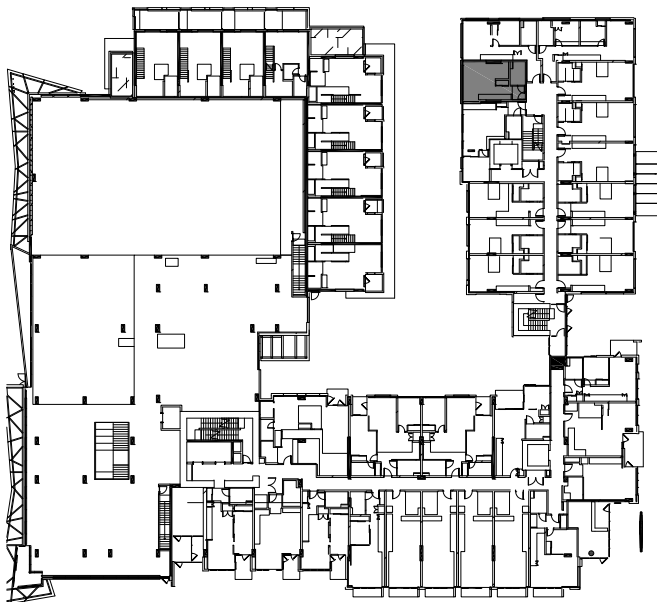
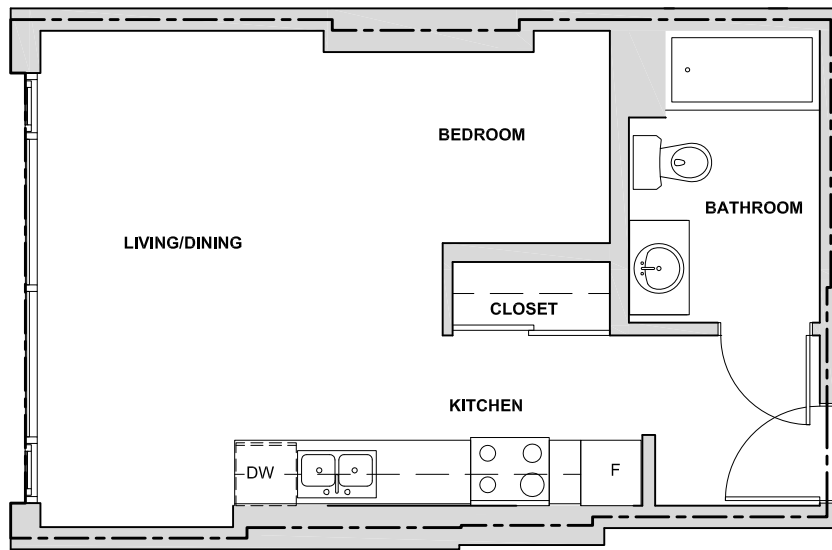
THE DEVELOPER RESERVES THE RIGHT TO MAKE CHANGES AND MODIFICATIONS TO THE INFORMATION CONTAINED HEREIN. FLOOR PLANS, LAYOUTS, AND FINISHES ARE SUBJECT TO CHANGE WITHOUT NOTICE.

CAPILANO RESIDENCES

2083 FULLERTON AVENUE
NORTH VANCOUVER, BC

UNIT S5

STUDIO
411 SQ FT



UNIT 202



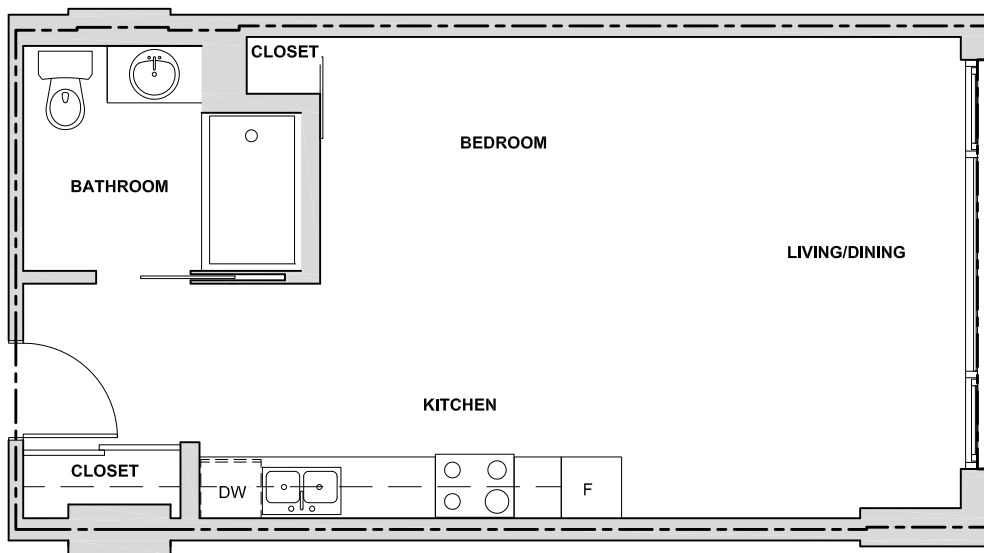
THE DEVELOPER RESERVES THE RIGHT TO MAKE CHANGES AND MODIFICATIONS TO THE INFORMATION CONTAINED HEREIN. FLOOR PLANS, LAYOUTS, AND FINISHES ARE SUBJECT TO CHANGE WITHOUT NOTICE.

CAPILANO RESIDENCES

2083 FULLERTON AVENUE
NORTH VANCOUVER, BC

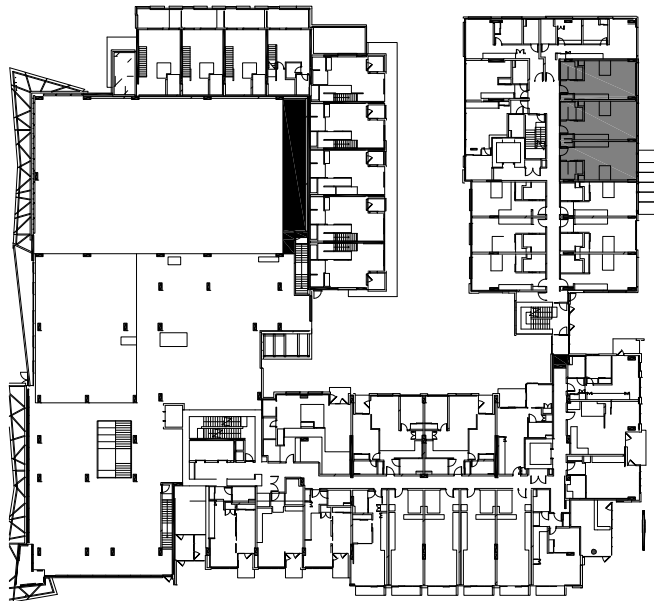
UNIT S2- E

STUDIO
489 SQ FT



LEVELS 2 - 4

UNITS 205, 206, 207, 303,
304, 305, 403, 404, 405



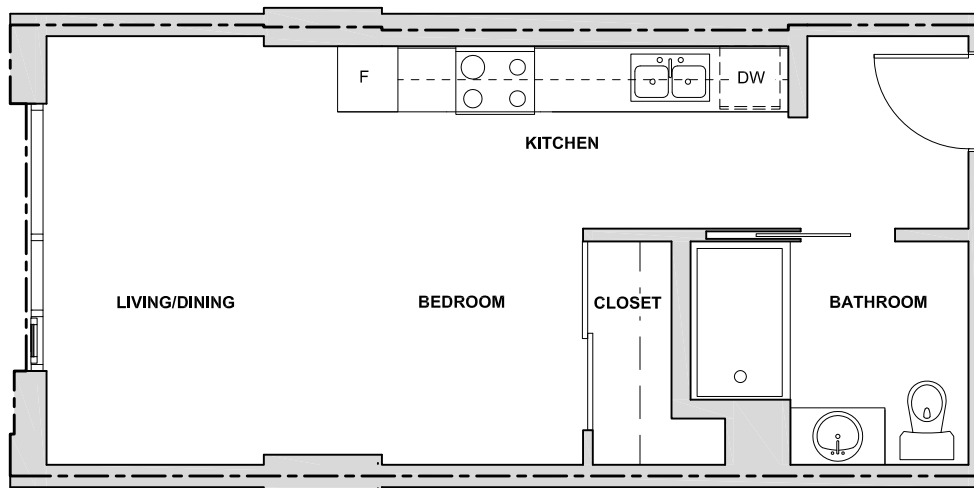
THE DEVELOPER RESERVES THE RIGHT TO MAKE CHANGES AND MODIFICATIONS TO THE INFORMATION CONTAINED HEREIN. FLOOR PLANS, LAYOUTS, AND FINISHES ARE SUBJECT TO CHANGE WITHOUT NOTICE.

CAPILANO RESIDENCES

2083 FULLERTON AVENUE
NORTH VANCOUVER, BC

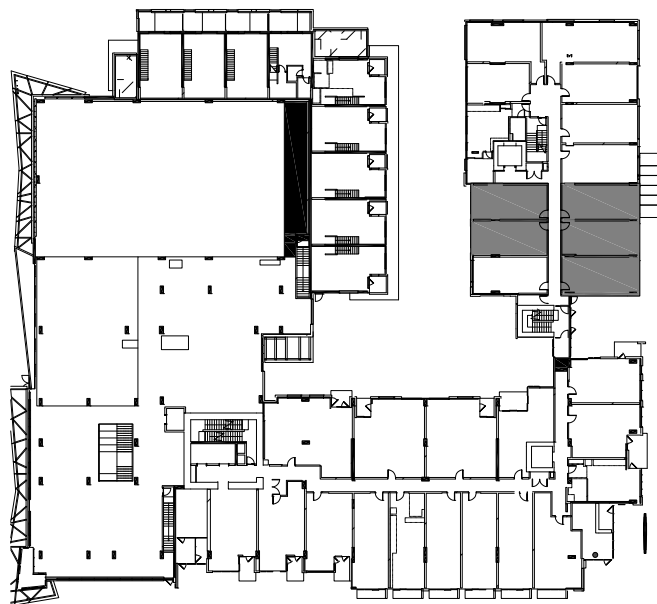
UNIT S1 - E

STUDIO
433 SQ FT



LEVELS 1 - 4

UNITS 101, 102, 208, 209,
210, 212, 213, 306, 307,
308, 310, 311, 406



THE DEVELOPER RESERVES THE RIGHT TO MAKE CHANGES AND MODIFICATIONS TO THE INFORMATION CONTAINED HEREIN. FLOOR PLANS, LAYOUTS, AND FINISHES ARE SUBJECT TO CHANGE WITHOUT NOTICE.