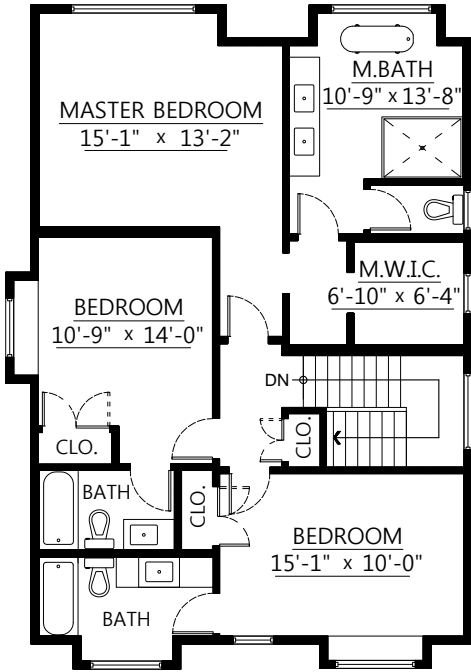




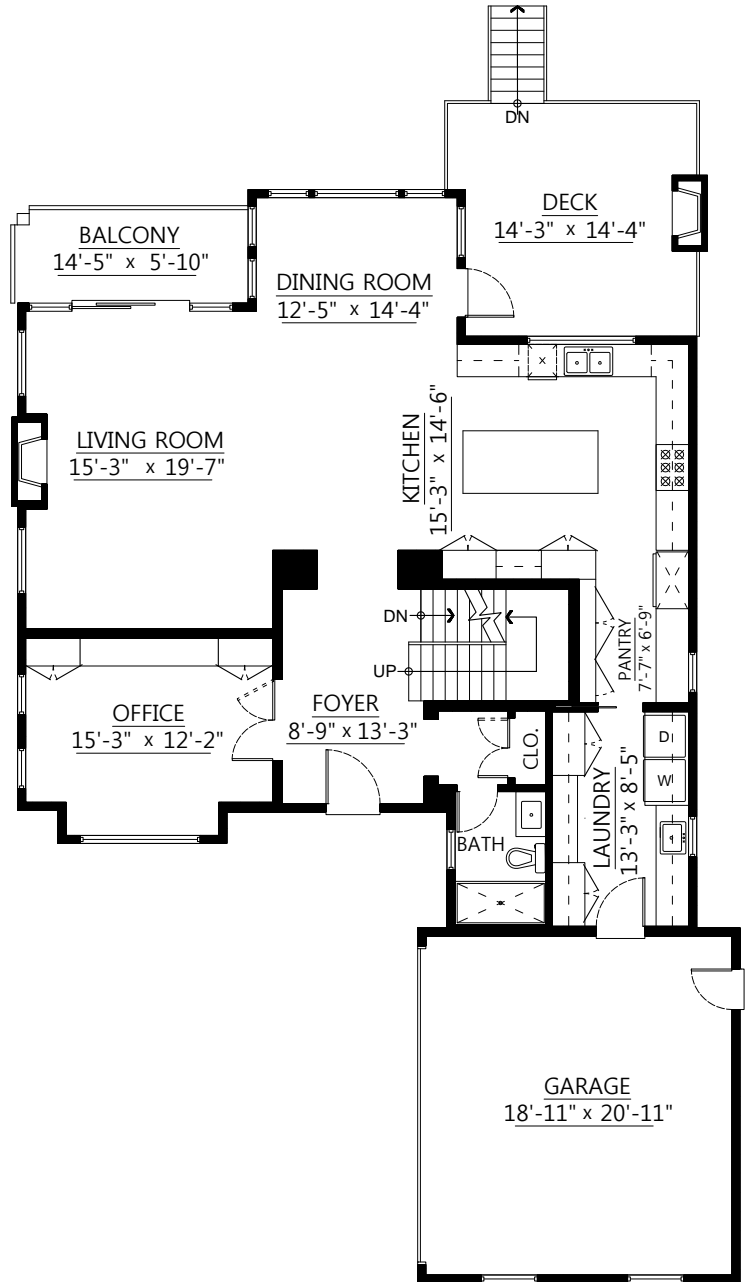
## 2232 Kings St., West Vancouver, B.C.

Main Floor: 1,515 sq.ft  
 Upper Floor: 1,068 sq.ft  
 Lower Floor: 1,515 sq.ft  
 Total: 4,098 sq.ft

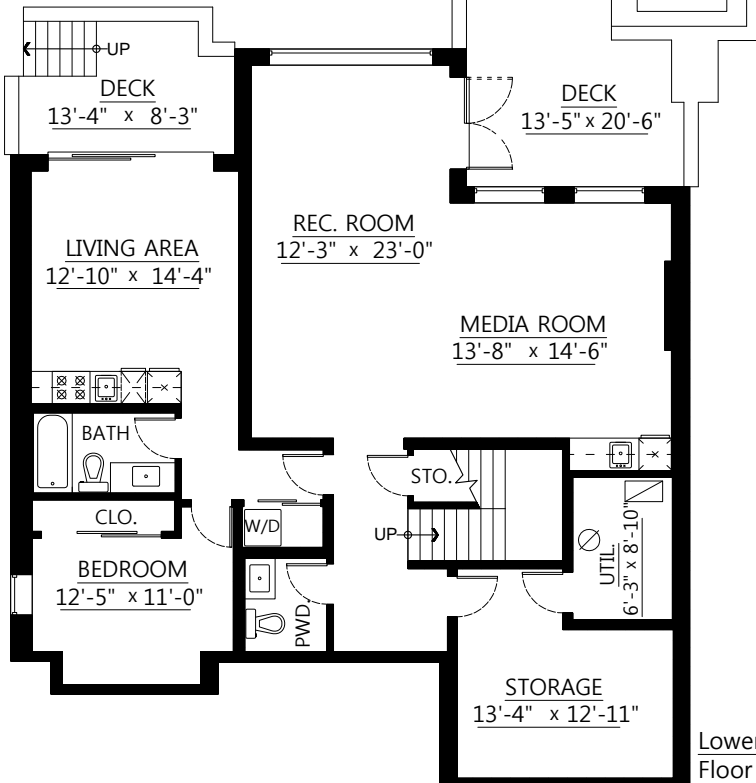
Garage: 427 sq.ft  
 Balcony: 88 sq.ft  
 Decks: 667 sq.ft



Upper Floor Plan  
 Floor Area: 1,068 sq.ft.



Main Floor Plan  
 Floor Area: 1,515 sq.ft.



Lower Floor Plan  
 Floor Area: 1,515 sq.ft.



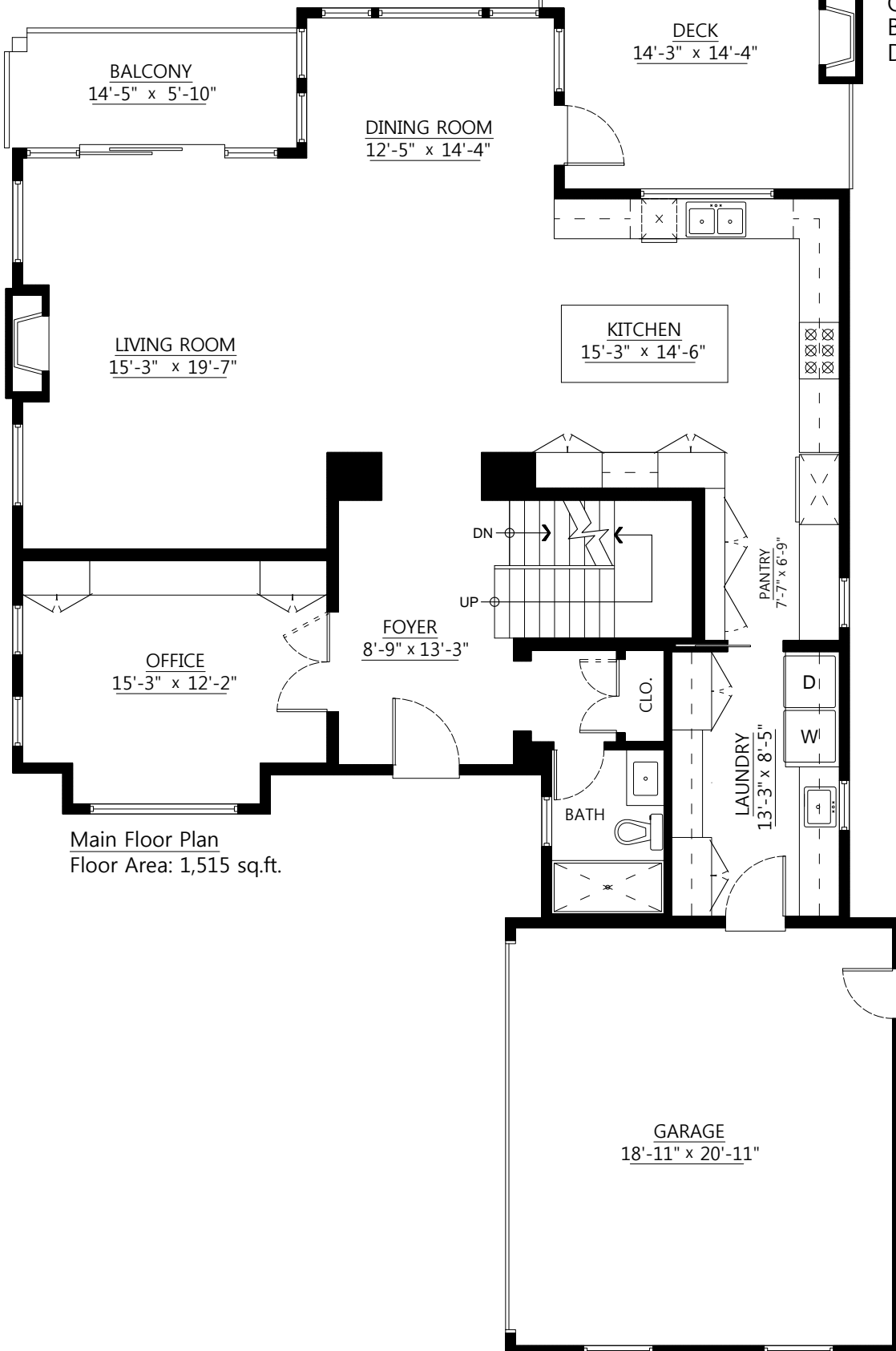
**Pixilink**  
 SOLUTIONS  
 604-639-5434



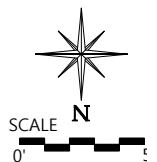
## 2232 Kings St., West Vancouver, B.C.

Main Floor:	1,515 sq.ft
Upper Floor:	1,068 sq.ft
Lower Floor:	1,515 sq.ft
<b>Total:</b>	<b>4,098 sq.ft</b>

Garage:	427 sq.ft
Balcony:	88 sq.ft
Decks:	667 sq.ft



Main Floor Plan  
Floor Area: 1,515 sq.ft.



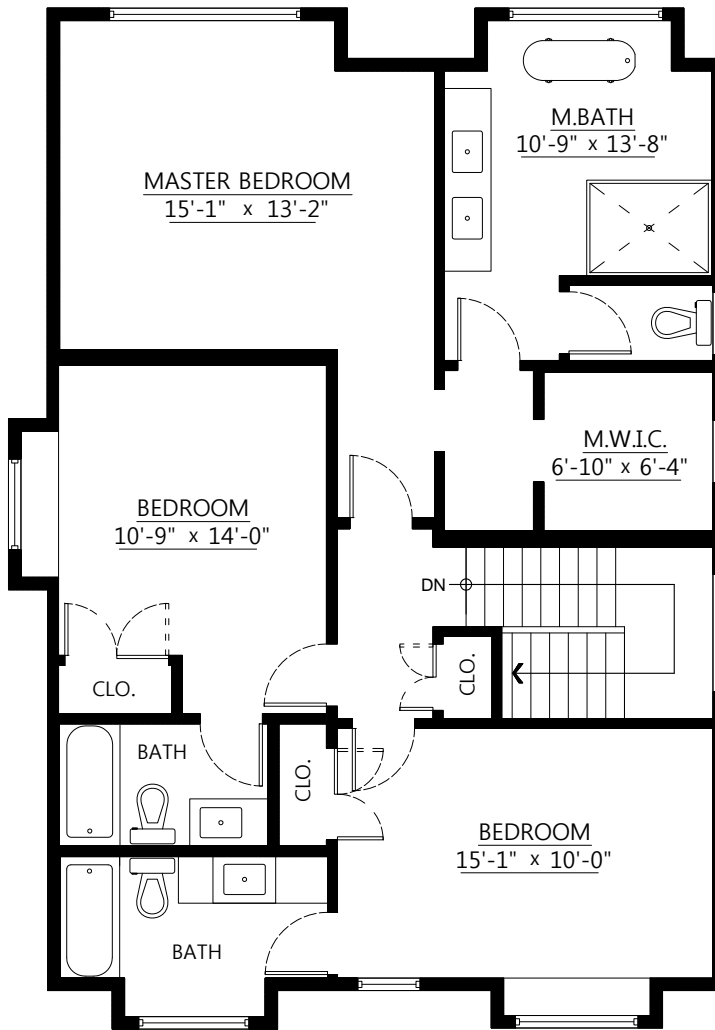
**Pixilink**  
SOLUTIONS  
604-639-5434



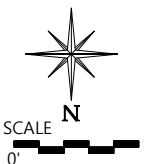
## 2232 Kings St., West Vancouver, B.C.

Main Floor:	1,515 sq.ft
Upper Floor:	1,068 sq.ft
Lower Floor:	1,515 sq.ft
<b>Total:</b>	<b>4,098 sq.ft</b>

Garage:	427 sq.ft
Balcony:	88 sq.ft
Decks:	667 sq.ft



Upper Floor Plan  
Floor Area: 1,068 sq.ft.



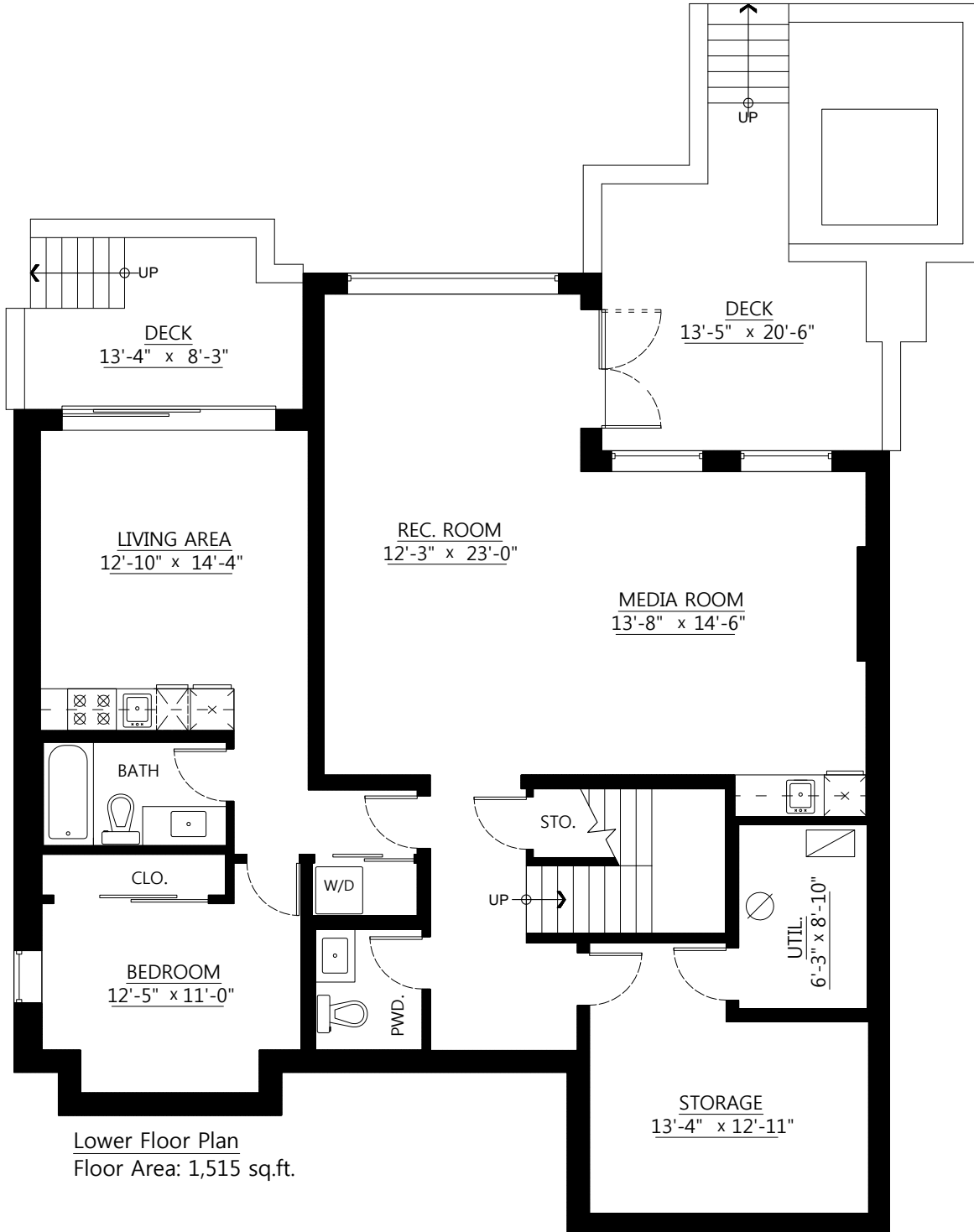
**Pixilink**  
SOLUTIONS  
604-639-5434



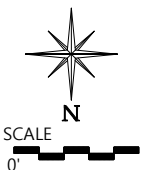
## 2232 Kings St., West Vancouver, B.C.

Main Floor:	1,515 sq.ft
Upper Floor:	1,068 sq.ft
Lower Floor:	1,515 sq.ft
<b>Total:</b>	<b>4,098 sq.ft</b>

Garage:	427 sq.ft
Balcony:	88 sq.ft
Decks:	667 sq.ft



Lower Floor Plan  
Floor Area: 1,515 sq.ft.



**Pixilink**  
SOLUTIONS  
604-639-5434