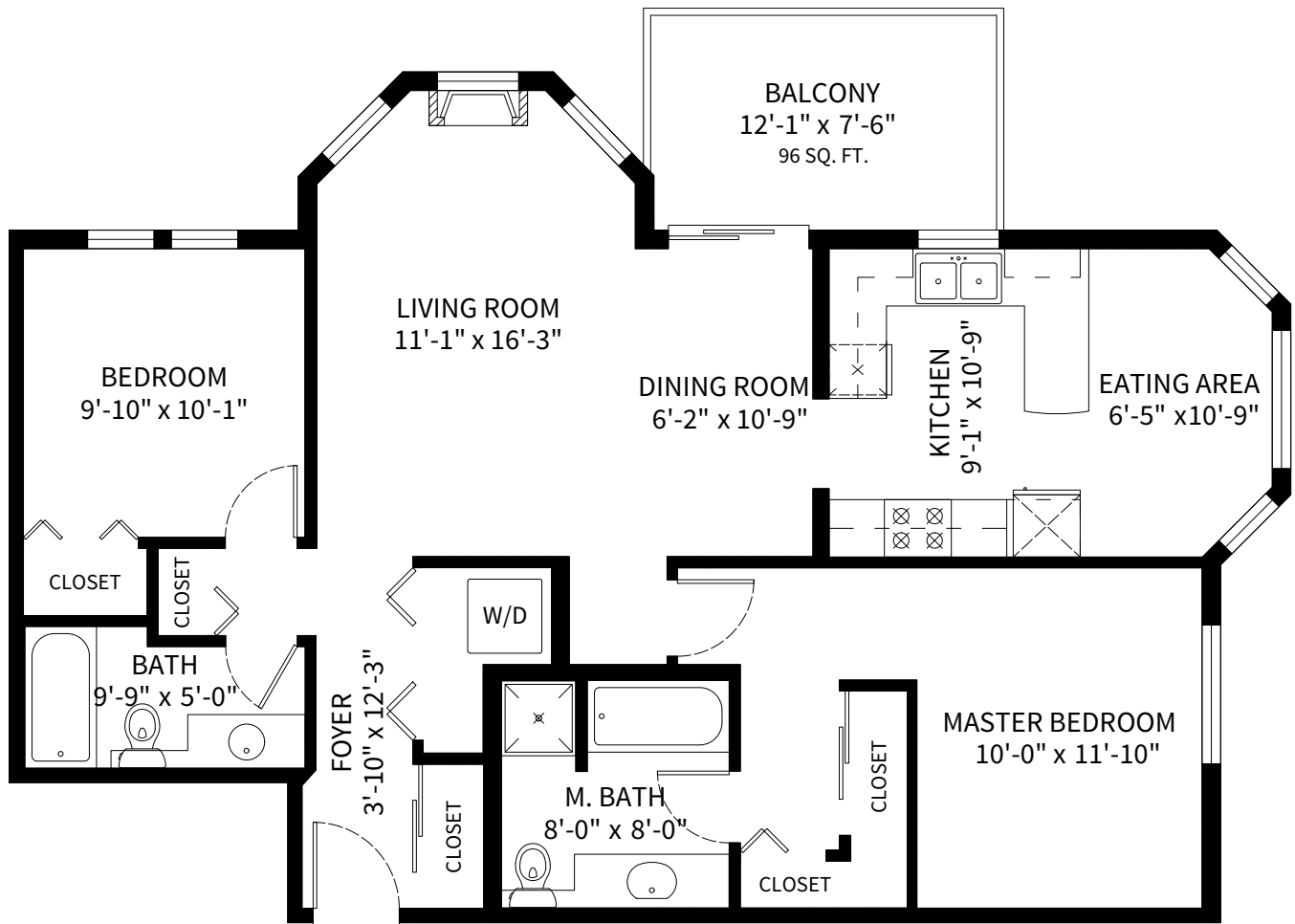


#301-3085 Primrose Lane, Coquitlam, BC



FLOOR PLAN
Ceiling Height: 8'-0"

Finished Area: 1050 SQ. FT.

Balcony: 96 SQ. FT.

Total: 1146 SQ. FT.



Adil Dinani
604-771-3495
adil@dinani.ca

floor plan designed by
ishot.ca Enterprises Inc.
604-299-9688
<http://ishot.ca>